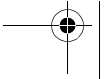
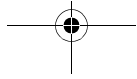


Introduction

The Brother Embroidering System (BES-500E) is a comprehensive program that consists of a variety of modules for creating fill stitch (tatami) patterns, motif stitch patterns, gradation patterns, jagged edge patterns and embroidery designs. In addition to creating your own designs, you can use an image to generate embroidery patterns. Your custom-made designs can be printed or exported for embroidering on your specific embroidering machine.



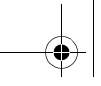
Getting Started

Chapter 1: Package Contents

Check that the following items are included. If anything is missing or damaged, contact your service representative.

Figure 1

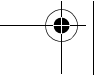
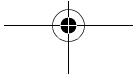
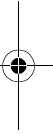
{!!package contents illustrations??!!}



Chapter 2: Principal Parts

Figure 2

{!!machine illustration??!!}



Chapter 3: Installing the Software

■ System requirements

Before installing the software, make sure that your computer meets the following requirements.

Computer:	IBM PC or compatible computer originally equipped with a USB port
Operating system:	Windows® 98 Second Edition, Me, 2000 or XP (Windows® 2000 or XP are strongly recommended.)
Processor:	Celeron 500 or higher (PentiumIII 1 GHz or higher is recommended.)
Hard disk free space:	At least 400 MB (1 GB or more is recommended.)
Memory:	At least 64 MB (128 MB or more is recommended.)
Monitor:	1024 × 768, High Color (16-bit) or higher
USB port:	USB Ver. 1.1 (required for ISM-Protector in order to save files)
CD-ROM drive:	Required for installation
Printer:	Supported graphic printer (if you wish to print images)

■ Installing the software

To install the software, provided on the enclosed CD-ROM:

- 1 Turn on the computer and start up Windows. Quit all other applications.
- 2 Insert the enclosed CD-ROM into the computer's CD-ROM drive. The Brother Stitch Softwares Setup Wizard for installing the software starts up, and then a dialog box automatically appears, allowing you to select what to install.

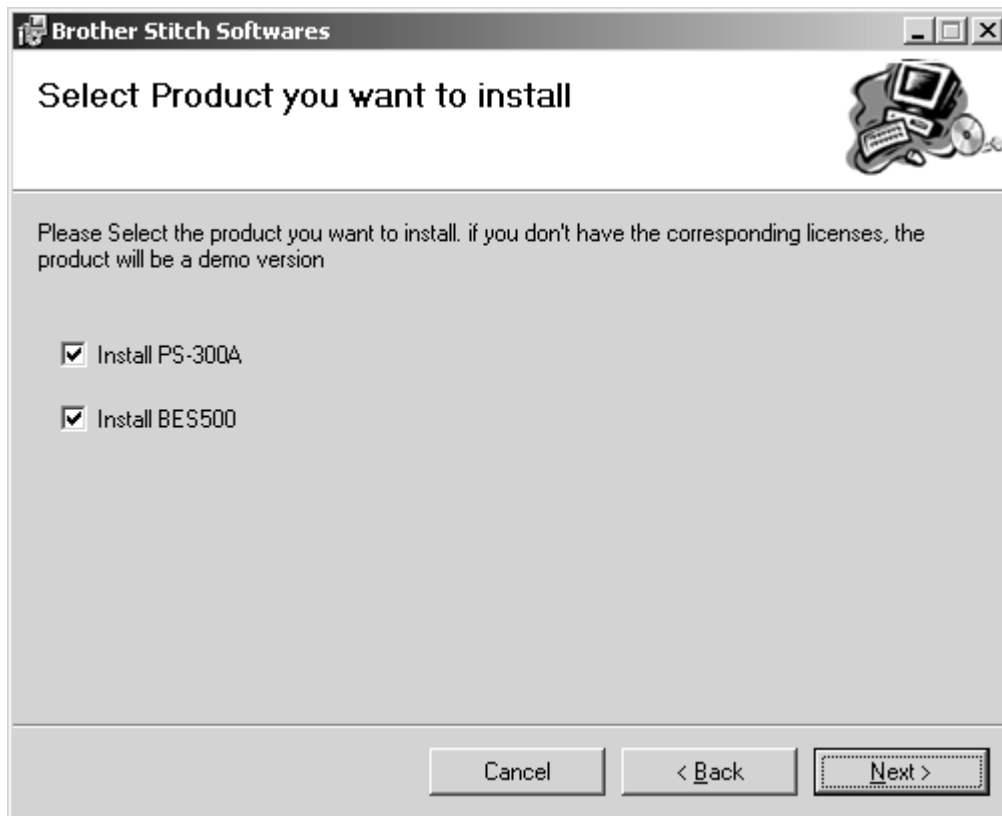
Figure 3: Brother Stitch Softwares Setup Wizard dialog box



NOTE: If the dialog box does not automatically appear, double-click **My Computer** on the desktop, and then double-click the CD-ROM drive containing the CD-ROM. (For Windows[®] XP, click **My Computer** in the Start menu, and then double-click the CD-ROM drive containing the CD-ROM.) Next, double-click **Setup.exe** to display the dialog box.

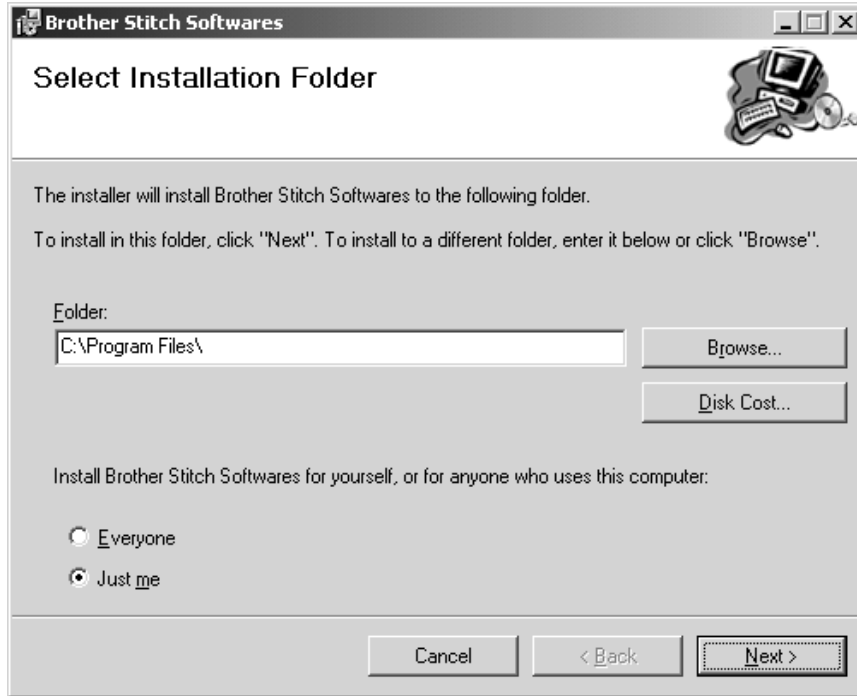
- ③ Windows[®] 2000 or XP: Select the **Install Non-DOS Driver for Windows 2000/XP** check box, and then click the **Install** button. A message appears, asking if you wish to begin the installation.
Windows[®] 98 Second Edition: Click the **Install** button, and then continue with step ⑥.
- ④ Click the **Next** button to install the non-dos driver. A message appears, indicating that the non-dos driver was successfully installed.
- ⑤ Click the **Finish** button.
- ⑥ A Welcome dialog box appears. Click the **Next** button. A dialog box appears, allowing you to select which product to install.

Figure 4



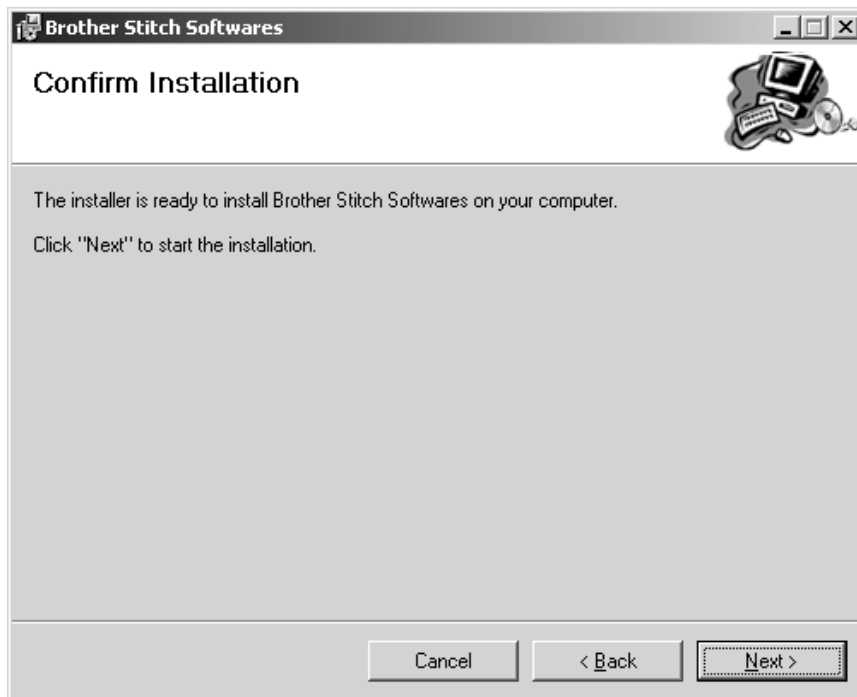
- 7 Select the product(s) that you wish to install, and then click the **Next** button. A dialog box appears, allowing you to choose the folder where the software will be installed.

Figure 5



- 8 Click the **Next** button. A dialog box appears, requesting confirmation to begin the installation.
NOTE: To change the folder, click the **Browse** button, select the desired folder from the **Browse for Folder** dialog box that appeared, and then click the **OK** button.

Figure 6



- Click the **Next** button to begin the installation. A dialog box appears, indicating that the Brother Stitch Software have been successfully installed.

Figure 7



- Click the **Close** button.

Chapter 4: Starting Up

■ Starting up the software

To start up the software, which provides you access to a variety of modules for creating embroidery stitch patterns and designs:

● Do one of the following:

- ◆ Double-click the shortcut for the desired software on the desktop.

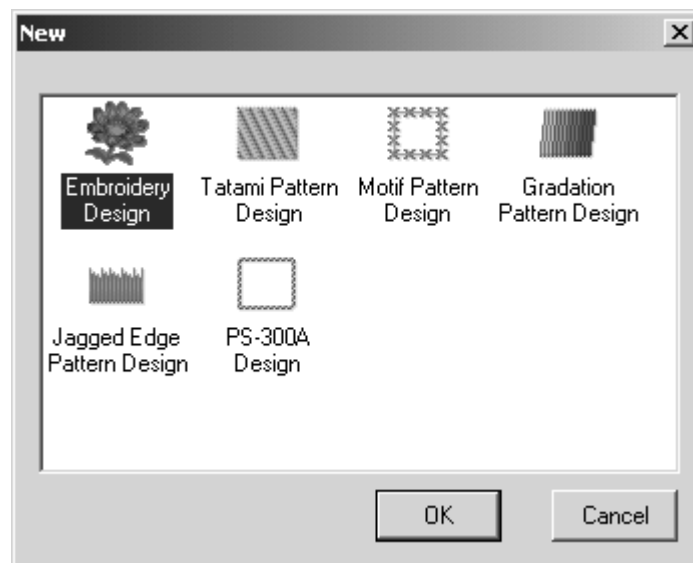
Figure 8

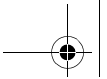


- ◆ Click the **Start** button in the taskbar to display the Start menu, point to **Programs**, point to the folder for the desired software (**Brother Embroidery Software(BES-500E)** or **Brother Embroidery Software(PS-300A)**), and then click the icon for the desired software (**BES-500E** or **PS-300A**).







The **New** dialog box appears.

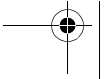
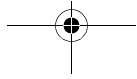
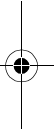
Figure 9: New dialog box





The following modules are available:

-  Embroidery Design (Continue with the procedure on page 10.)
-  Tatami Pattern Design (Continue with the procedure on page 31.)
-  Motif Pattern Design (Continue with the procedure on page 32.)
-  Gradation Pattern Design (Continue with the procedure on page 33.)
-  Jagged Edge Pattern Design (Continue with the procedure on page 34.)
-  PS-300A Design (Continue with the procedure on page 35.)



■ Starting up the Embroidery Design module

The Embroidery Design module can be used for creating new embroidery designs or for automatically creating designs from a scanned image or an image drawn using a graphics application. (Embroidery designs can be created from image files with the following extensions: .bmp, .jpg or .pcx.)

To start up the Embroidery Design module:


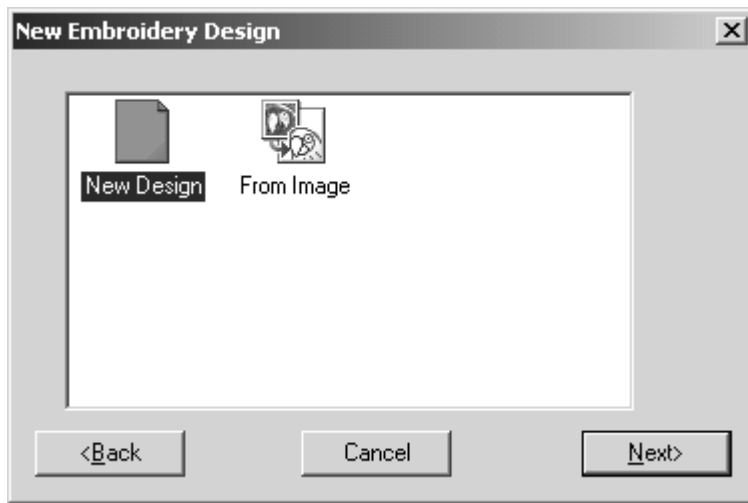
- 1 Click the **Embroidery Design** icon (). The **New Embroidery Design** dialog box appears.

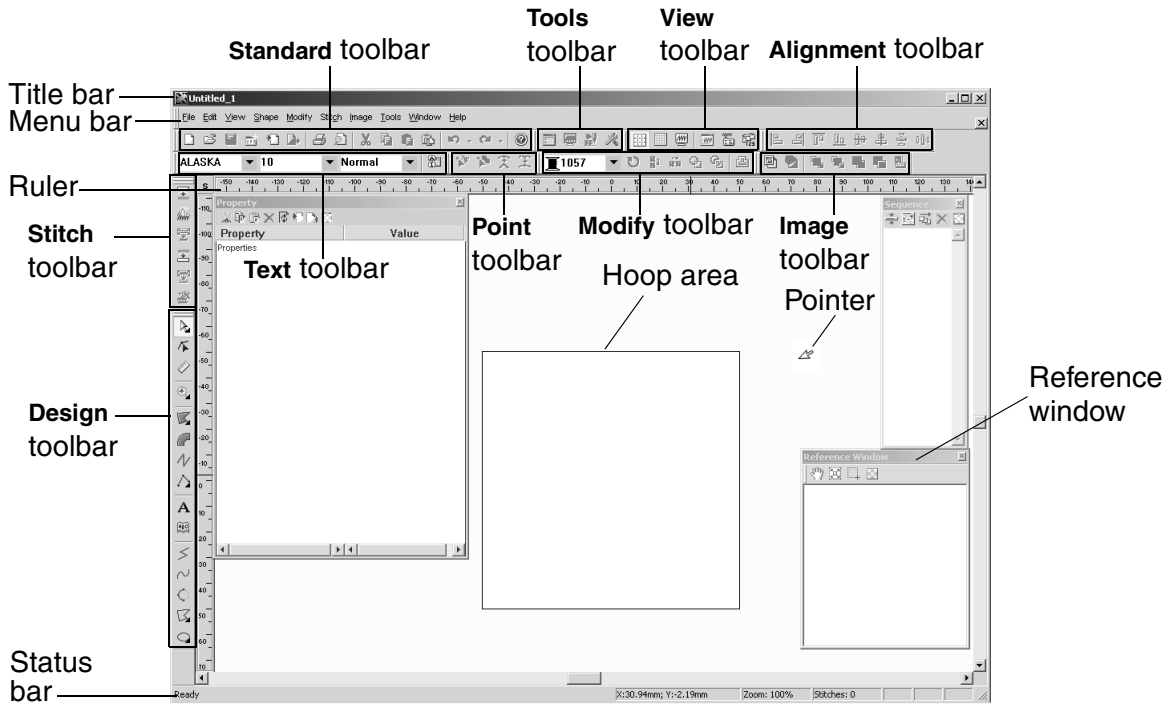
Figure 10: New Embroidery Design dialog box



2 Do one of the following:

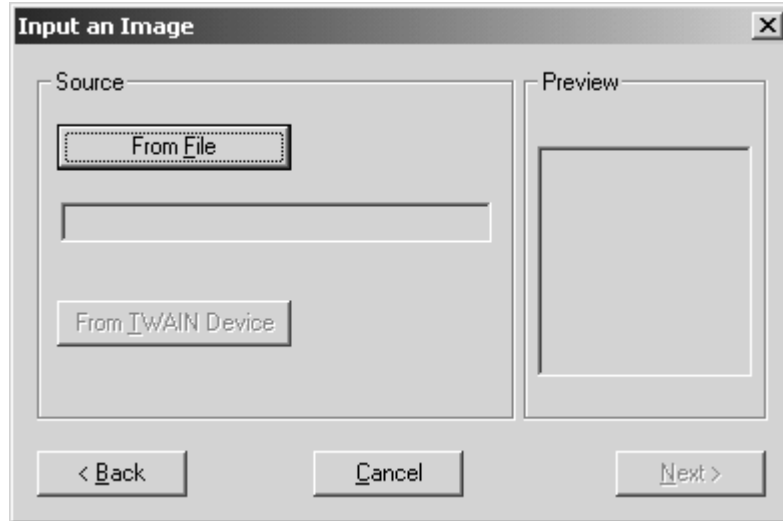
- ◆ To create an embroidery design in a blank design area, click the **New Design** icon, and then click the **Next** button. The main window for the Embroidery Design module appears.

Figure 11



- ◆ To create an embroidery design from an image, click the **From Image** icon, and then click the **Next** button. The **Input an Image** dialog box appears.

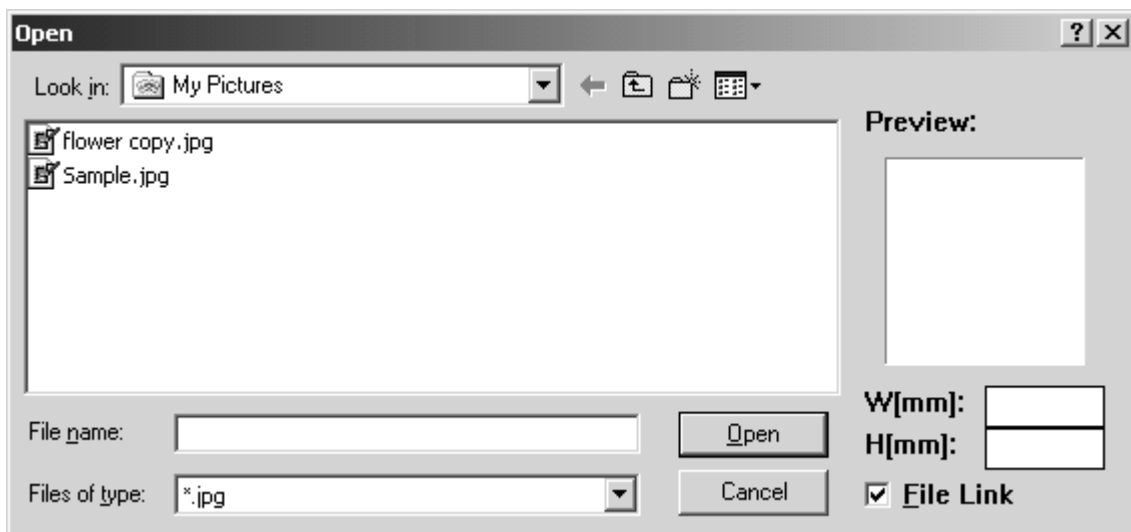
Figure 12: Input an Image dialog box



Then, do one of the following:

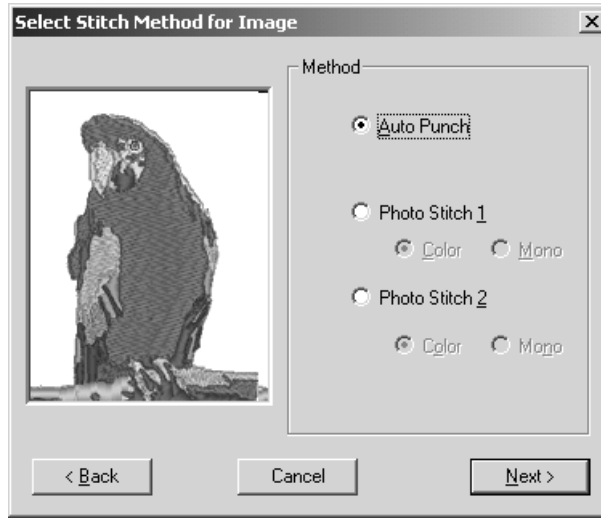
- ◆ Click the **From File** button. The **Open** dialog box appears.

Figure 13: Open dialog box



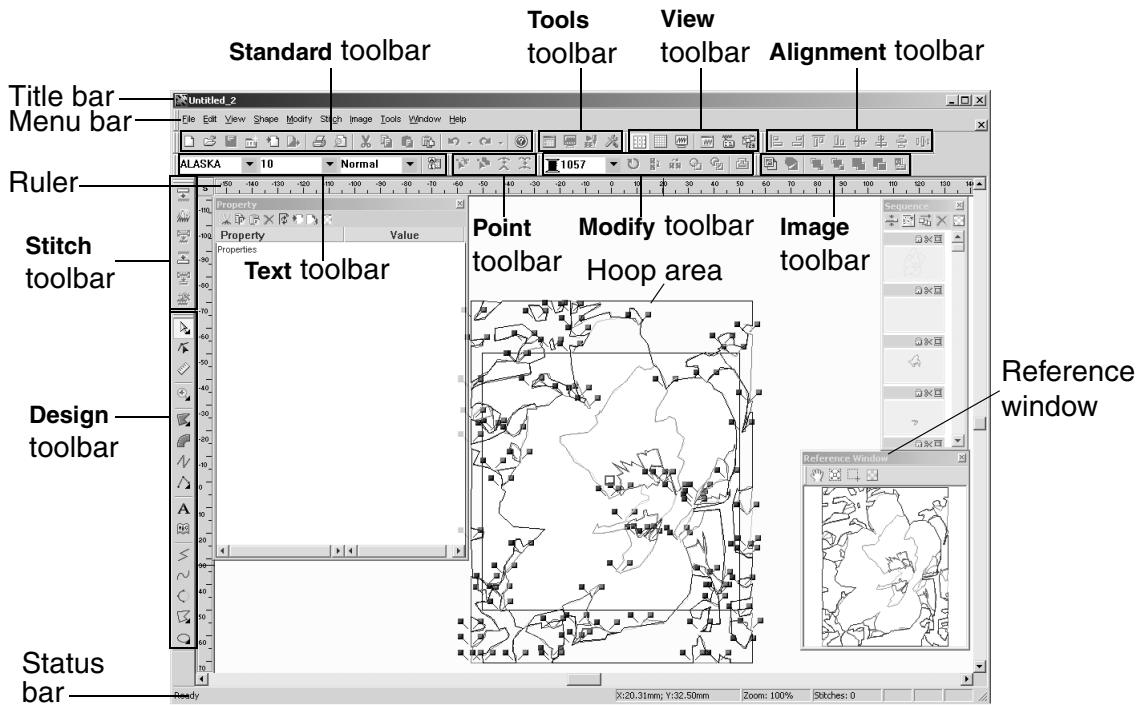
In the **Files of type** drop-down list, select the format for the image file that you wish to use. In the **Look in** drop-down list and the list below it, select the folder containing the desired file, and then select the image file that you wish to use. Click the **Open** button. The **Input an image** dialog box appears again with the selected image displayed in the **Preview** box. Click the **Next** button. The **Select Stitch Method for Image** dialog box appears.

Figure 14: Select Stitch Method for Image dialog box



Select how the image will be converted (**Auto Punch** to automatically extract the image boundaries, **Photo Stitch 1** to automatically create realistic photo embroidery in color or black and white, or **Photo Stitch 2** to automatically create realistic photo embroidery in 4 colors (**Color**) or 1 color (**Mono**)), and then make the desired settings in the dialog boxes that appear. (For more details, refer to *Auto Punch settings* on page 15, *Photo Stitch 1/Color settings* on page 16, *Photo Stitch 1/Mono settings* on page 20, *Photo Stitch 2/Color settings* on page 24 or *Photo Stitch 2/Mono settings* on page 27.) The embroidery design appears in the main window for the Embroidery Design module.

Figure 15



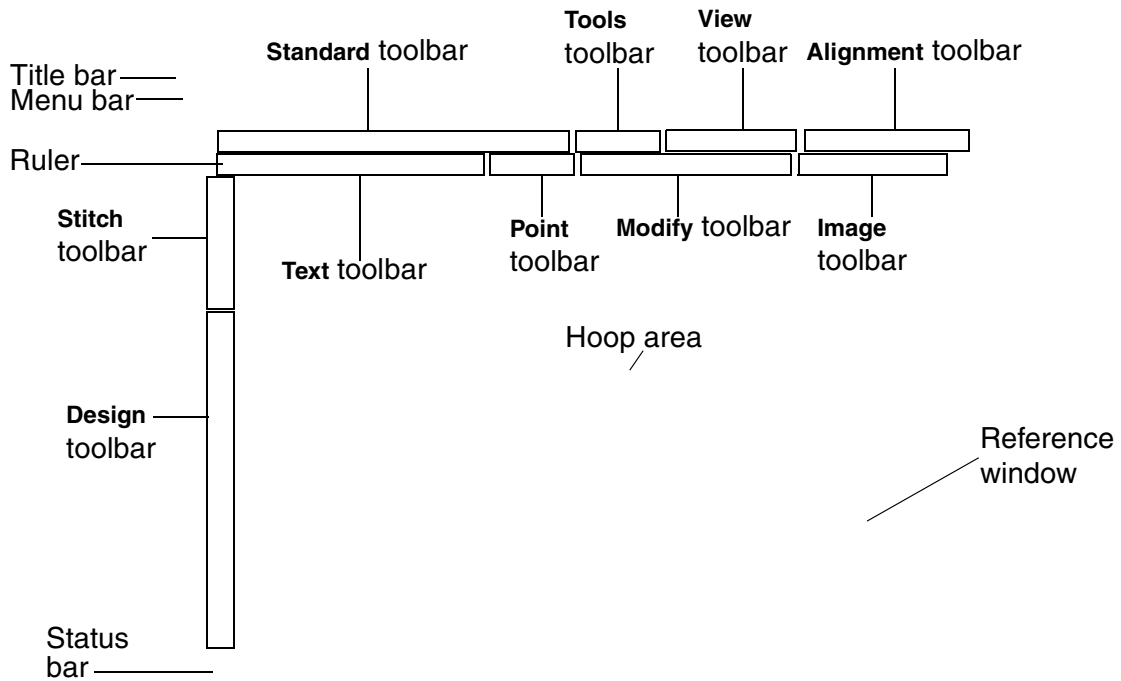
- ◆ Click the **From TWAIN Device** button. The **Scan** dialog box appears.

Figure 16: Scan dialog box

{!!Scan dialog box??!!}

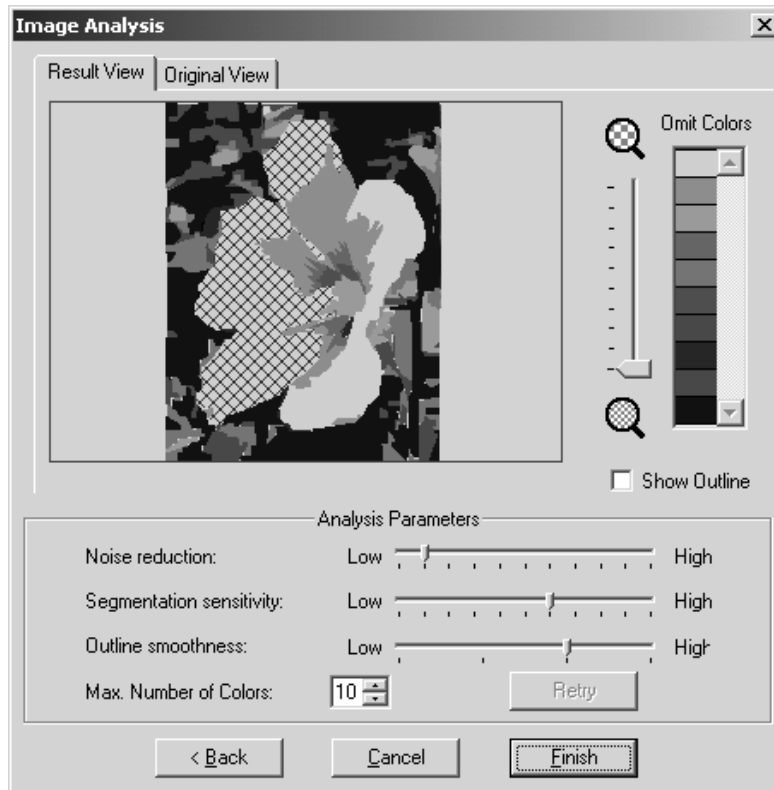
To select a TWAIN device, click the **Select** button, select the desired TWAIN device in the dialog box that appeared, and then click the **Select** button. To scan an image, click the **Acquire** button. The dialog box for the scanner's software appears. Follow the instructions for the scanner's software to scan the image and add the image to the design area. The embroidery design appears in the main window for the Embroidery Design module.



Figure 17



Auto Punch settings

Figure 18: Image Analysis dialog box



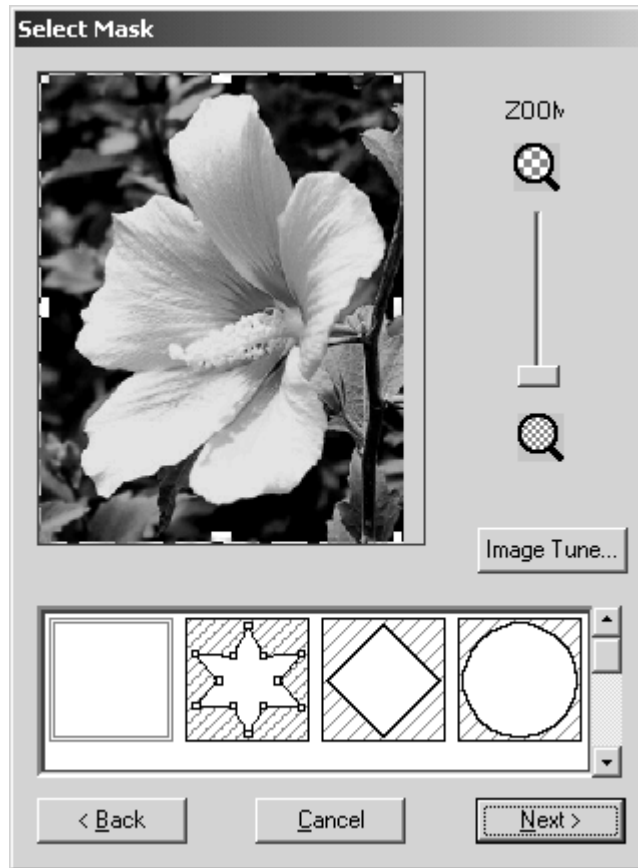
- ◆ To select areas of the design that will not be sewn, click them so that they are filled with a crosshatch pattern.
- ◆ To enlarge the design so that details can be viewed, move the slider toward .
- ◆ To reduce the design so that the entire design can be viewed, move the slider toward .
- ◆ To omit specific colors from the embroidery design, click the color in the **Omit Colors** list. Colors that are crossed out are specified to not be sewn.
- ◆ To display the outline extracted from the image, select the **Show Outline** check box.
- ◆ To adjust the level of noise that is removed from the image, move the **Noise reduction** slider to the desired setting.
- ◆ To adjust the sensitivity for determining how areas are separated, move the **Segmentation sensitivity** slider to the desired setting.
- ◆ To adjust the smoothness of the extracted outline, move the **Outline smoothness** slider to the desired setting.
- ◆ To specify the maximum number of colors used, type or select the desired number in the **Max. Number of Colors** box.
- ◆ To reconvert the image after changing any of the settings in the **Analysis Parameters** group box, click the **Retry** button.

NOTE: If the **Retry** button is not clicked after the desired settings in the **Analysis Parameters** group box are changed, the new settings will not be applied when the image is converted.

- ◆ To display the original image, click the **Original View** tab.
- ◆ To display the converted image as an embroidery design in the main window, click the **Finish** button.

Photo Stitch 1/Color settings

Figure 19: Select Mask dialog box






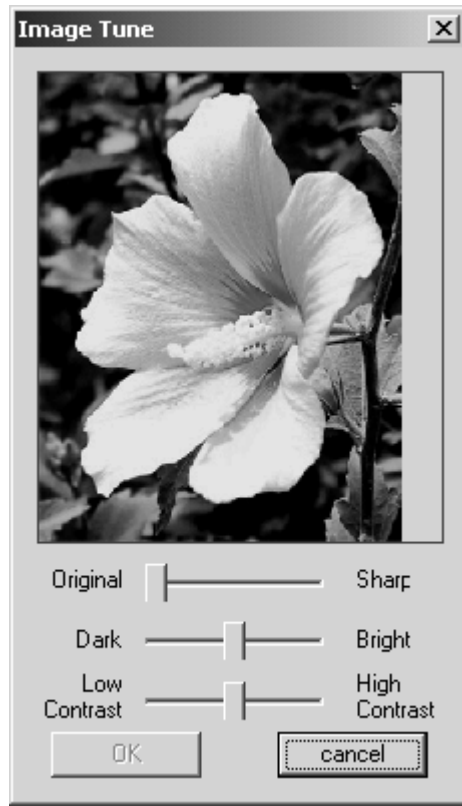
- ◆ To enlarge the design so that details can be viewed, move the **ZOOM** slider toward .
- ◆ To reduce the design so that the entire design can be viewed, move the **ZOOM** slider toward .
- ◆ To trim the image into a different shape, select the desired mask shape from the list at the bottom of the dialog box.
- ◆ To create a specific mask shape, select , and then do any of the following:
 - ◆ To move a point, move the pointer over a handle (small square) on the selection frame that appears, and then drag the handle to the desired location.
 - ◆ To add a point, click on the selection frame.
 - ◆ To delete a point, select the desired point, and then press the keyboard's Delete key.
- ◆ To adjust the sharpness, brightness or contrast of the original image, click the **Image Tune** button. The **Image Tune** dialog box appears.

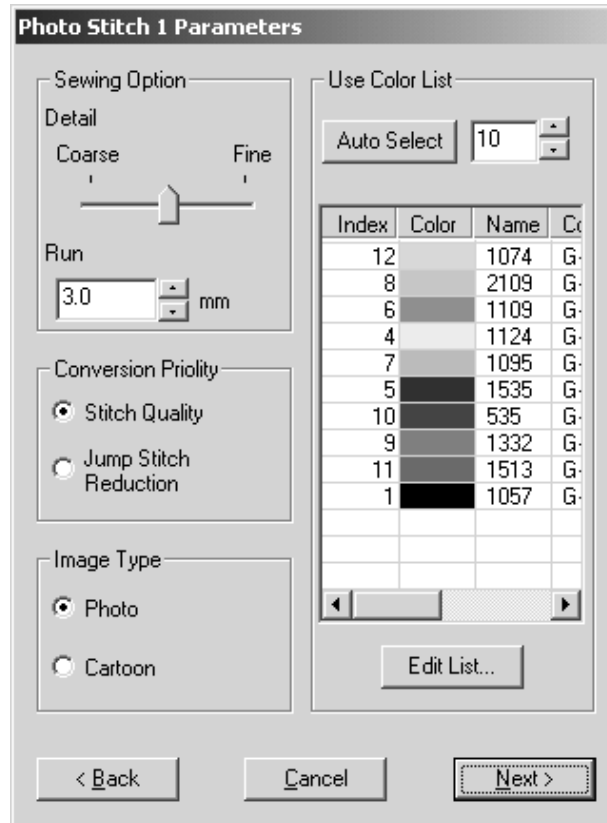
Figure 20: Image Tune dialog box



Move the sliders to adjust the image as desired, and then click the **OK** button.

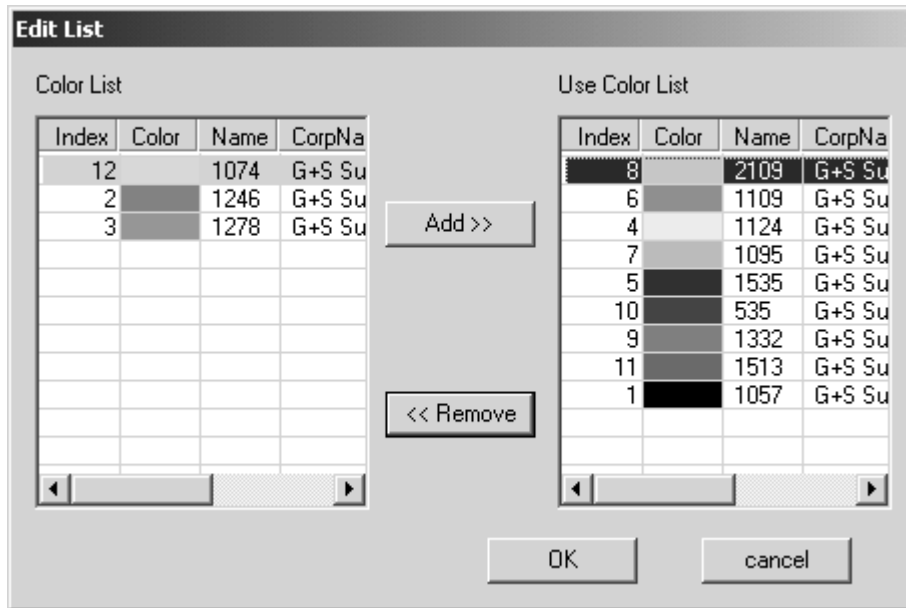
- ◆ To apply the settings selected in the **Select Mask** dialog box and continue converting the image data to an embroidery design using the **Photo Stitch 1/Color** method, click the **Next** button. The **Photo Stitch 1 Parameters** dialog box appears.

Figure 21: Photo Stitch 1 Parameters dialog box



- ◆ To adjust how detailed the embroidery data will be, move the **Detail** slider to the desired setting.
NOTE: Selecting a setting close to **Fine** creates more details in the design and increases the number of stitches.
- ◆ To adjust the minimum sewing pitch used in the pattern, type or select the desired value in the **Run** box
- ◆ In **Conversion Priority** group box, select whether to give priority to **Stitch Quality**, which will result in many jump stitches, or **Jump Stitch Reduction**, which will reduce complications during embroidering, but will also slightly reduce the stitching quality.
- ◆ In the **Image Type** group box, select whether the image is a photograph (**Photo**) so that the thread colors will be mixed, giving the design a more natural look, or an illustration (**Cartoon**) so that the thread colors will not be mixed, giving the design a more simply colored look.
- ◆ To specify the maximum number of colors used, type or select the desired number in the **Use Color List** box.
- ◆ To automatically select the most appropriate thread colors, click the **Auto Select** button.
NOTE: The selected thread colors appear the list in the order of their brightness levels, which is also the order that they will be sewn. The order cannot be changed. In addition, a maximum number of 50 colors can appear in the list.
- ◆ To manually specify the thread colors that will be used, click the **Edit List** button. The **Edit List** dialog box appears.

Figure 22: Edit List dialog box



Do any of the following:

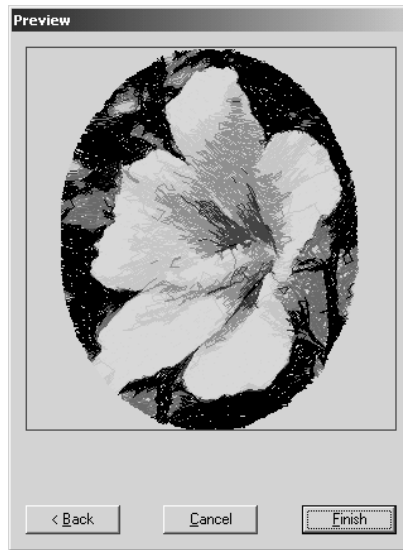
- ◆ To add a color to the **Use Color List**, select the desired color from the **Color List**, and then click the **Add** button. The color is moved from the **Color List** to the **Use Color List**.
- ◆ To remove a color from the **Use Color List**, select the desired color from the **Use Color List**, and then click the **Remove** button. The color is moved back from the **Use Color List** to the **Color List**.

NOTE: The selected thread colors appear the lists in the order of their brightness levels, which is also the order that they would be sewn. The order cannot be changed. In addition, a maximum number of 50 colors can appear in the **Use Color List**.

To apply the changes to the list of colors that will be used, click the **OK** button.

- ◆ To apply the settings selected in the **Photo Stitch 1 Parameters** dialog box and continue converting the image data to an embroidery design using the **Photo Stitch 1/Color** method, click the **Next** button. The **Preview** dialog box appears.

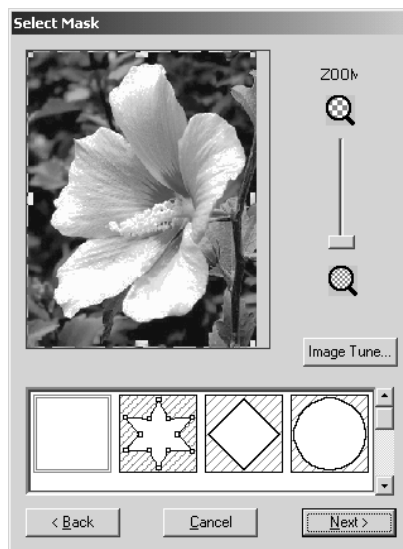
Figure 23: Preview dialog box





- ◆ To display the converted image as an embroidery design in the main window, click the **Finish** button.

Photo Stitch 1/Mono settings

Figure 24: Select Mask dialog box



- ◆ To enlarge the design so that details can be viewed, move the **ZOOM** slider toward .
- ◆ To reduce the design so that the entire design can be viewed, move the **ZOOM** slider toward .
- ◆ To trim the image into a different shape, select the desired mask shape from the list at the bottom of the dialog box.


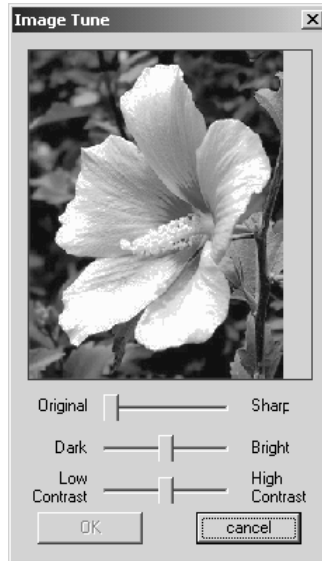
- ◆ To create a specific mask shape, select , and then do any of the following:
 - ◆ To move a point, move the pointer over a handle (small square) on the selection frame that appears, and then drag the handle to the desired location.
 - ◆ To add a point, click on the selection frame.
 - ◆ To delete a point, select the desired point, and then press the keyboard's Delete key.
- ◆ To adjust the sharpness, brightness or contrast of the original image, click the **Image Tune** button. The **Image Tune** dialog box appears.

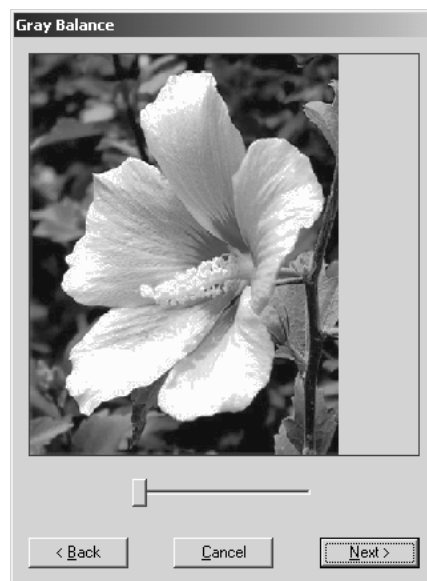
Figure 25: Image Tune dialog box



Move the sliders to adjust the image as desired, and then click the **OK** button.

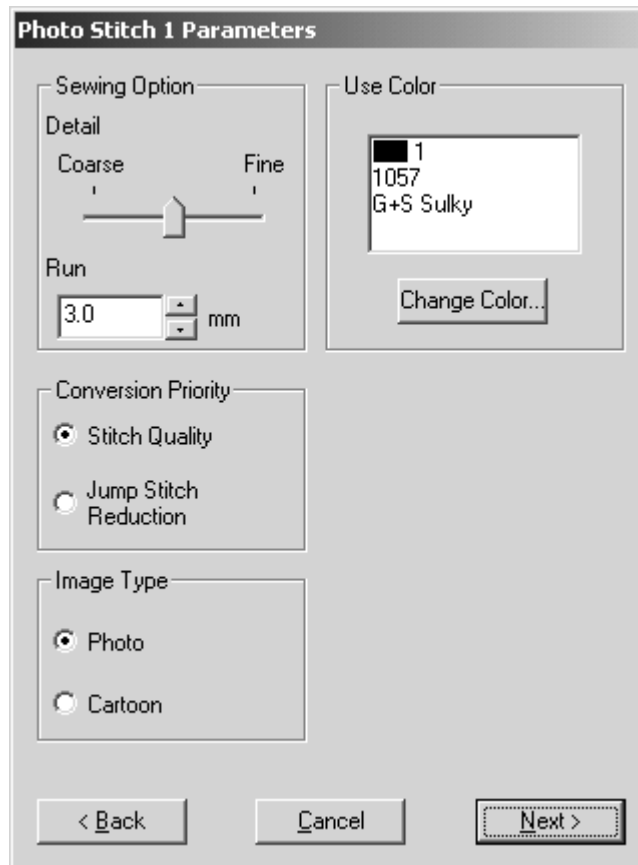
- ◆ To apply the settings selected in the **Select Mask** dialog box and continue converting the image data to an embroidery design using the **Photo Stitch 1/Mono** method, click the **Next** button. The **Gray Balance** dialog box appears.

Figure 26: Gray Balance dialog box



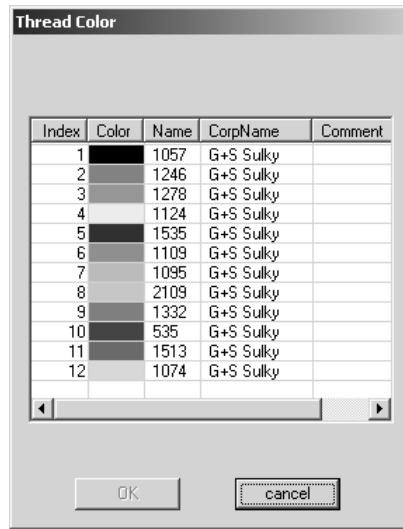
- ◆ To specify the parts of the image that embroidery data will be created for, move the slider until the desired parts remain in black. (Embroidery data will not be created for any part of the image that becomes white.)
- ◆ To apply the setting selected in the **Gray Balance** dialog box and continue converting the image data to an embroidery design using the **Photo Stitch 1/Mono** method, click the **Next** button. The **Photo Stitch 1 Parameters** dialog box appears.

Figure 27: Photo Stitch 1 Parameters dialog box



- ◆ To adjust how detailed the embroidery data will be, move the **Detail** slider to the desired setting.
NOTE: Selecting a setting close to **Fine** creates more details in the design and increases the number of stitches.
- ◆ To adjust the minimum sewing pitch used in the pattern, type or select the desired value in the **Run** box
- ◆ In **Conversion Priority** group box, select whether to give priority to **Stitch Quality**, which will result in many jump stitches, or **Jump Stitch Reduction**, which will reduce complications during embroidering, but will also slightly reduce the stitching quality.
- ◆ In the **Image Type** group box, select whether the image is a photograph (**Photo**) so that the thread colors will be mixed, giving the design a more natural look, or an illustration (**Cartoon**) so that the thread colors will not be mixed, giving the design a more simply colored look.
- ◆ To change the thread color that will be used to create the embroidery design, click the **Change Color** button. The **Thread Color** dialog box appears.

Figure 28: Thread Color dialog box



Select the desired thread color from the list, and then click the **OK** button.

- ◆ To apply the settings selected in the **Photo Stitch 1 Parameters** dialog box and continue converting the image data to an embroidery design using the **Photo Stitch 1/Mono** method, click the **Next** button. The **Preview** dialog box appears.

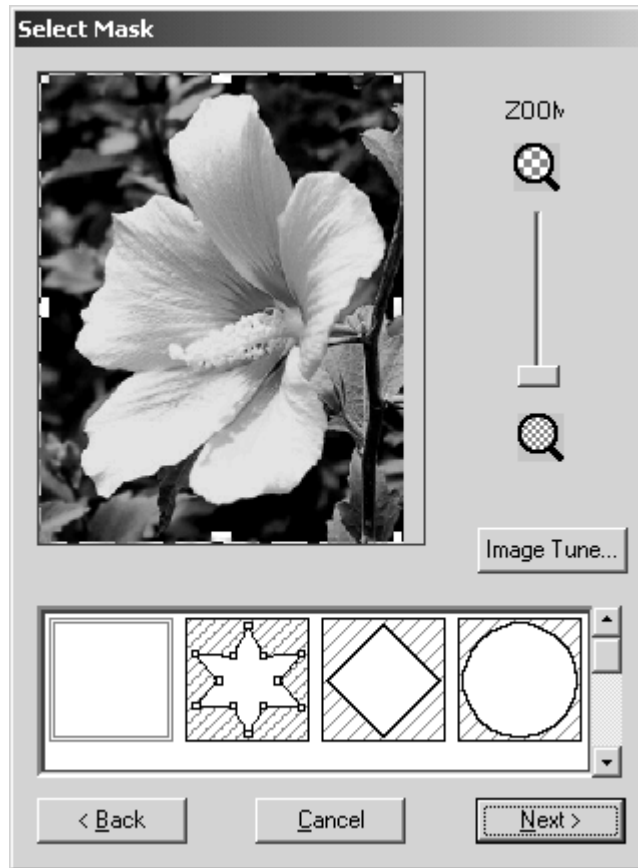
Figure 29: Preview dialog box



- ◆ To display the converted image as an embroidery design in the main window, click the **Finish** button.

Photo Stitch 2/Color settings

Figure 30: Select Mask dialog box






- ◆ To enlarge the design so that details can be viewed, move the **ZOOM** slider toward .
- ◆ To reduce the design so that the entire design can be viewed, move the **ZOOM** slider toward .
- ◆ To trim the image into a different shape, select the desired mask shape from the list at the bottom of the dialog box.
- ◆ To create a specific mask shape, select , and then do any of the following:
 - ◆ To move a point, move the pointer over a handle (small square) on the selection frame that appears, and then drag the handle to the desired location.
 - ◆ To add a point, click on the selection frame.
 - ◆ To delete a point, select the desired point, and then press the keyboard's Delete key.
- ◆ To adjust the sharpness, brightness or contrast of the original image, click the **Image Tune** button. The **Image Tune** dialog box appears.

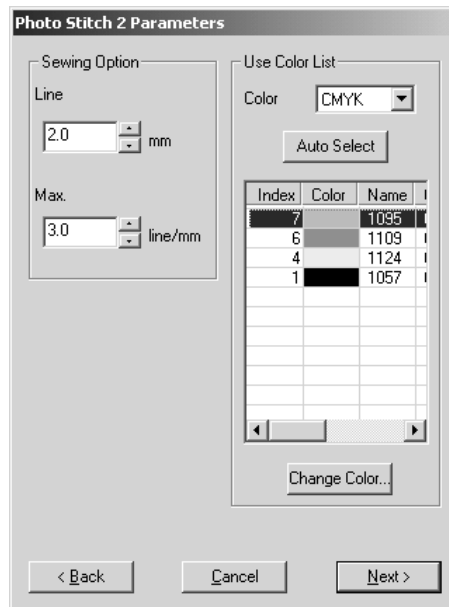
Figure 31: Image Tune dialog box



Move the sliders to adjust the image as desired, and then click the **OK** button.

- ◆ To apply the settings selected in the **Select Mask** dialog box and continue converting the image data to an embroidery design using the **Photo Stitch 2/Color** method, click the **Next** button. The **Photo Stitch 2 Parameters** dialog box appears.

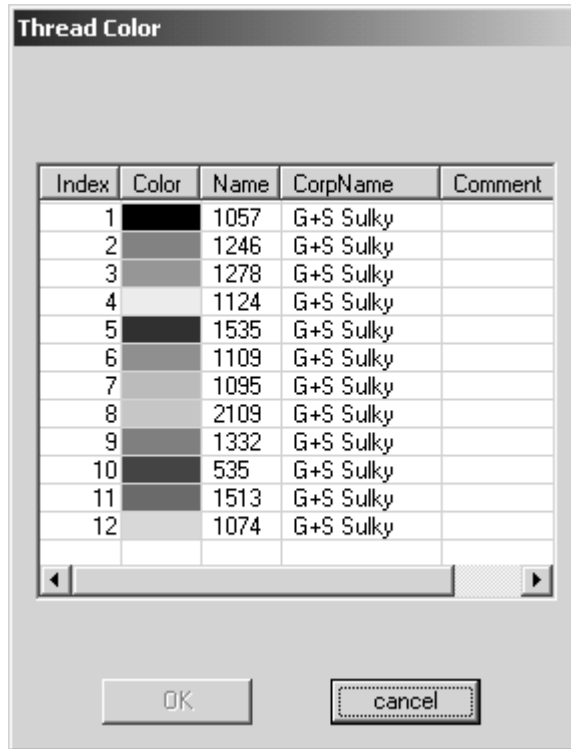
Figure 32: Photo Stitch 2 Parameters dialog box



- ◆ To specify the spacing of parallel lines used to create the embroidery design, type or select the desired value in the **Line** box.
- ◆ To specify maximum stitch density for areas of the embroidery design sewn with the zigzag stitch, type or select the desired value in the **Max.** box.

- ◆ To specify the four colors used from those available (cyan (C), magenta (M), yellow (Y), black (K), red (R), green (G) and blue (B)), select the desired combination from the **Color** drop-down list.
- ◆ To automatically select the most appropriate thread colors from the selected thread color combination, click the **Auto Select** button. The selected thread colors appear in the **Use Color List**.
- ◆ To change the thread colors that will be used to create the embroidery design, select a color in the **Use Color List**, and then click the **Change Color** button. The **Thread Color** dialog box appears.

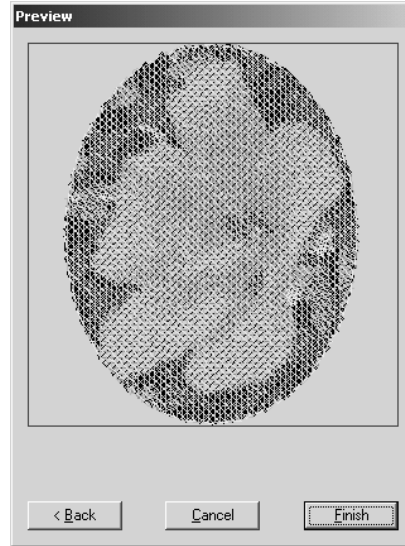
Figure 33: Thread Color dialog box



Select the desired thread colors from the list, and then click the **OK** button.

- ◆ To apply the settings selected in the **Photo Stitch 2 Parameters** dialog box and continue converting the image data to an embroidery design using the **Photo Stitch 2/Color** method, click the **Next** button. The **Preview** dialog box appears.

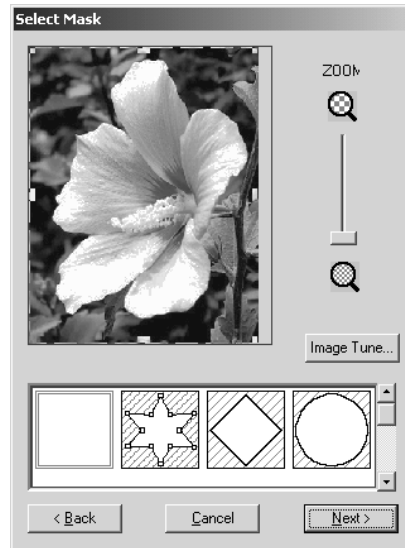
Figure 34: Preview dialog box





- ◆ To display the converted image as an embroidery design in the main window, click the **Finish** button.

Photo Stitch 2/Mono settings

Figure 35: Select Mask dialog box



- ◆ To enlarge the design so that details can be viewed, move the **ZOOM** slider toward .
- ◆ To reduce the design so that the entire design can be viewed, move the **ZOOM** slider toward .
- ◆ To trim the image into a different shape, select the desired mask shape from the list at the bottom of the dialog box.


- ◆ To create a specific mask shape, select , and then do any of the following:
 - ◆ To move a point, move the pointer over a handle (small square) on the selection frame that appears, and then drag the handle to the desired location.
 - ◆ To add a point, click on the selection frame.
 - ◆ To delete a point, select the desired point, and then press the keyboard's Delete key.
- ◆ To adjust the sharpness, brightness or contrast of the original image, click the **Image Tune** button. The **Image Tune** dialog box appears.

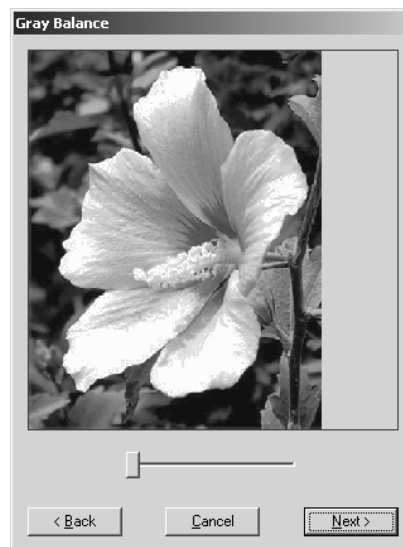
Figure 36: Image Tune dialog box



Move the sliders to adjust the image as desired, and then click the **OK** button.

- ◆ To apply the settings selected in the **Select Mask** dialog box and continue converting the image data to an embroidery design using the **Photo Stitch 1/Mono** method, click the **Next** button. The **Gray Balance** dialog box appears.

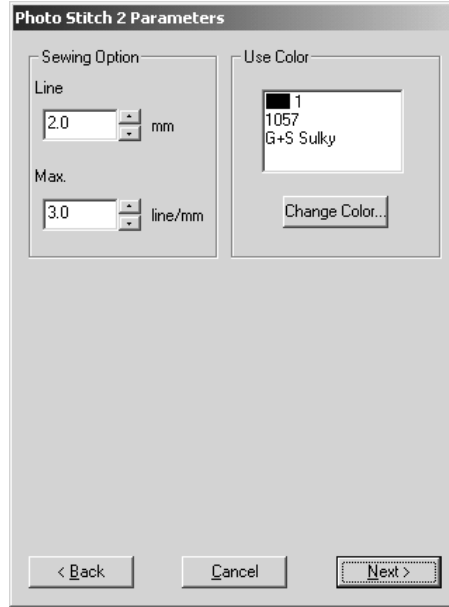
Figure 37: Gray Balance dialog box



- ◆ To specify the parts of the image that embroidery data will be created for, move the slider until the desired parts remain in black. (Embroidery data will not be created for any part of the image that becomes white.)

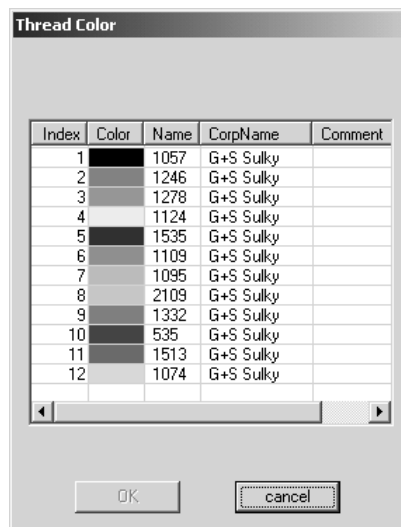
- ◆ To apply the setting selected in the **Gray Balance** dialog box and continue converting the image data to an embroidery design using the **Photo Stitch 2/Mono** method, click the **Next** button. The **Photo Stitch 2 Parameters** dialog box appears.

Figure 38: Photo Stitch 2 Parameters dialog box



- ◆ To specify the spacing of parallel lines used to create the embroidery design, type or select the desired value in the **Line** box.
- ◆ To specify maximum stitch density for areas of the embroidery design sewn with the zigzag stitch, type or select the desired value in the **Max.** box.
- ◆ To change the thread color that will be used to create the embroidery design, click the **Change Color** button. The **Thread Color** dialog box appears.

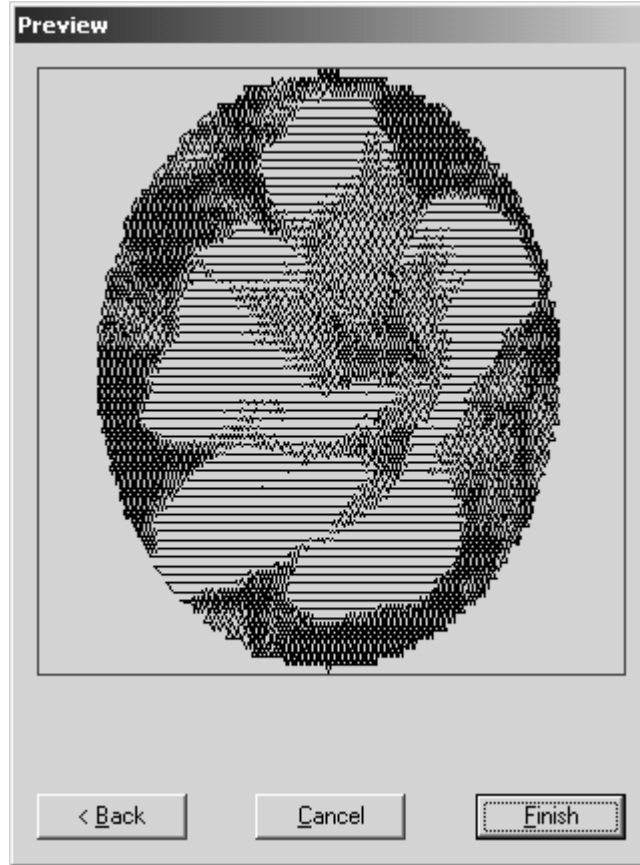
Figure 39: Thread Color dialog box



Select the desired thread color from the list, and then click the **OK** button.

- ◆ To apply the settings selected in the **Photo Stitch 2 Parameters** dialog box and continue converting the image data to an embroidery design using the **Photo Stitch 2/Mono** method, click the **Next** button. The **Preview** dialog box appears.

Figure 40: Preview dialog box



- ◆ To display the converted image as an embroidery design in the main window, click the **Finish** button.

■ Starting up the Tatami Pattern Design module

With the Tatami Pattern Design module, new patterns for embroidering fill (tatami) stitches can easily be designed.

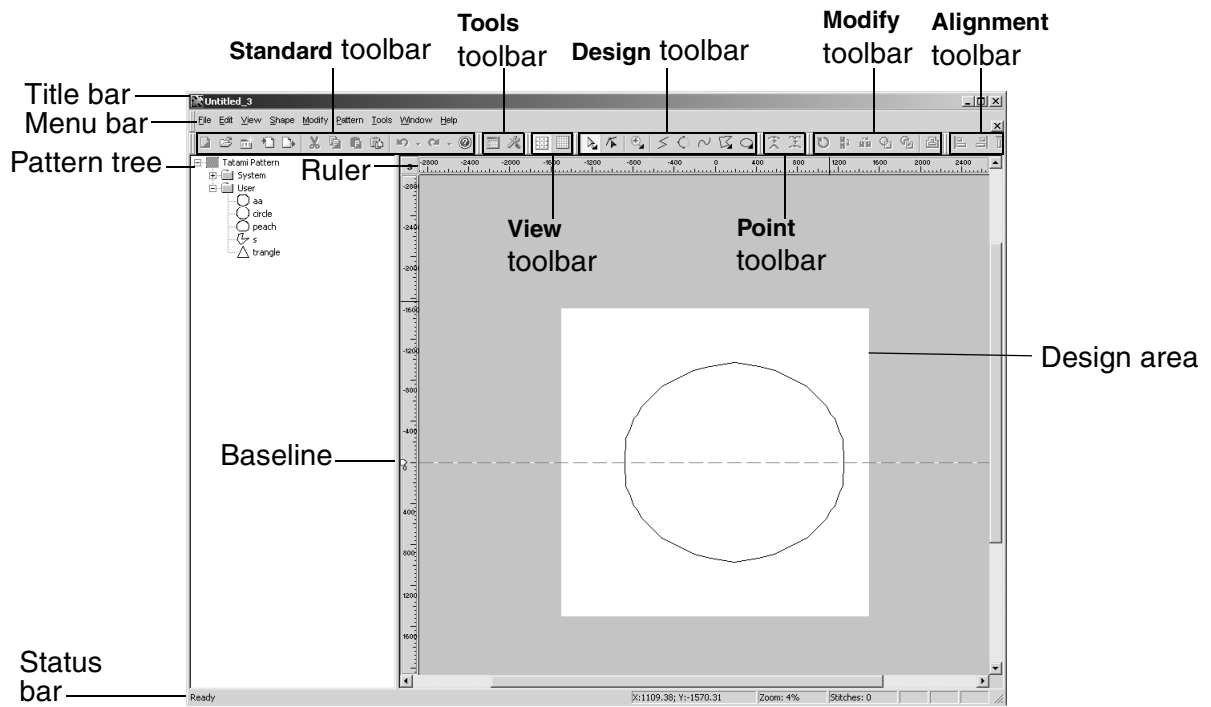
To start up the Tatami Pattern Design module:

- Click the **Tatami Pattern Design** icon (). The main window for the Tatami Pattern

Design module appears.

Design module appears.

Figure 41



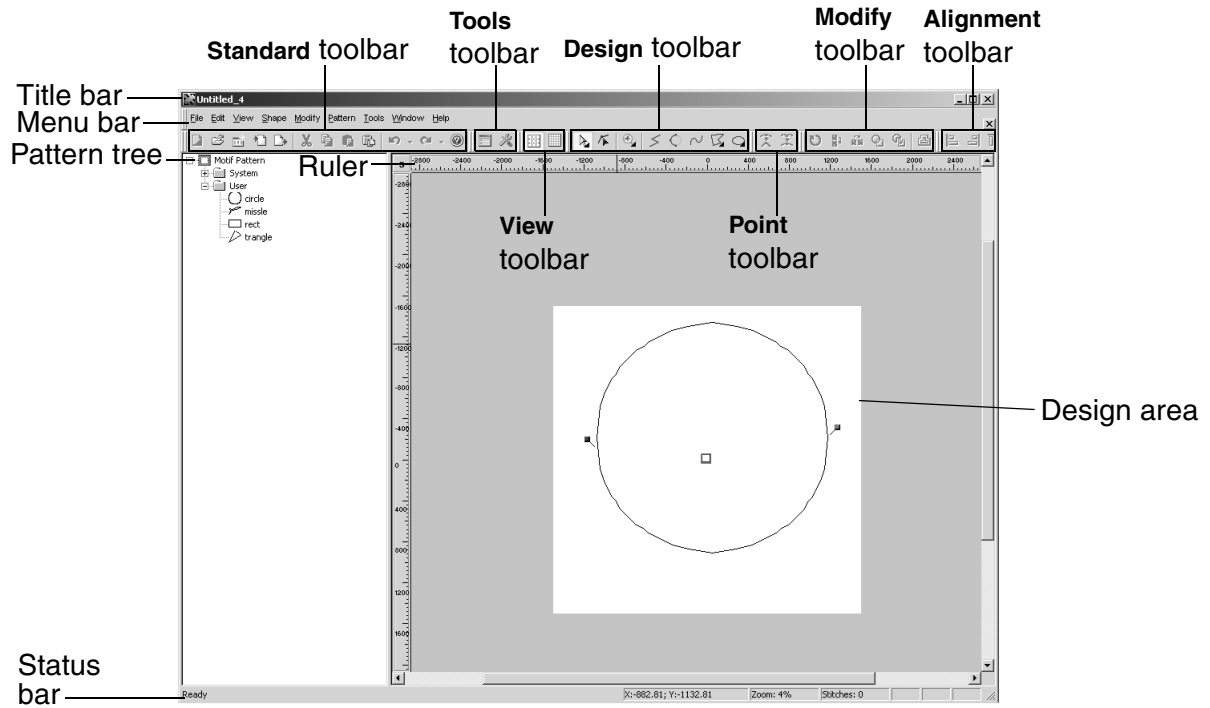
■ Starting up the Motif Pattern Design module

Use the Motif Pattern Design module to easily design new motif stitch patterns that can be used in your embroidery design.

To start up the Motif Pattern Design module:

- Click the **Motif Pattern Design** icon (). The main window for the Motif Pattern Design module appears.

Figure 42



■ Starting up the Gradation Pattern Design module

The Gradation Pattern Design module enables you to design new gradation patterns that can be used to enhance your embroidery design.

To start up the Gradation Pattern Design module:


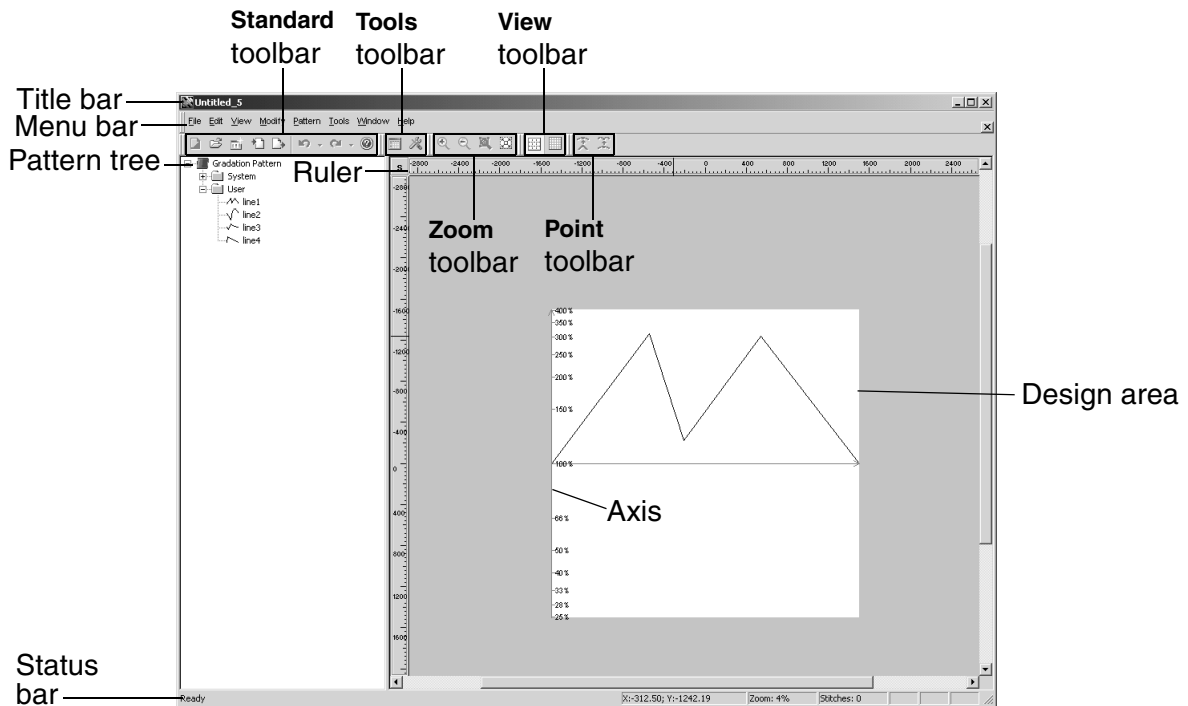
- Click the **Gradation Pattern Design** icon (). The main window for the Gradation Pattern Design module appears.

Figure 43



NOTE: The axes indicate the varying intensities of the gradation with the horizontal axis representing the reference line.

Starting up the Jagged Edge Pattern Design module

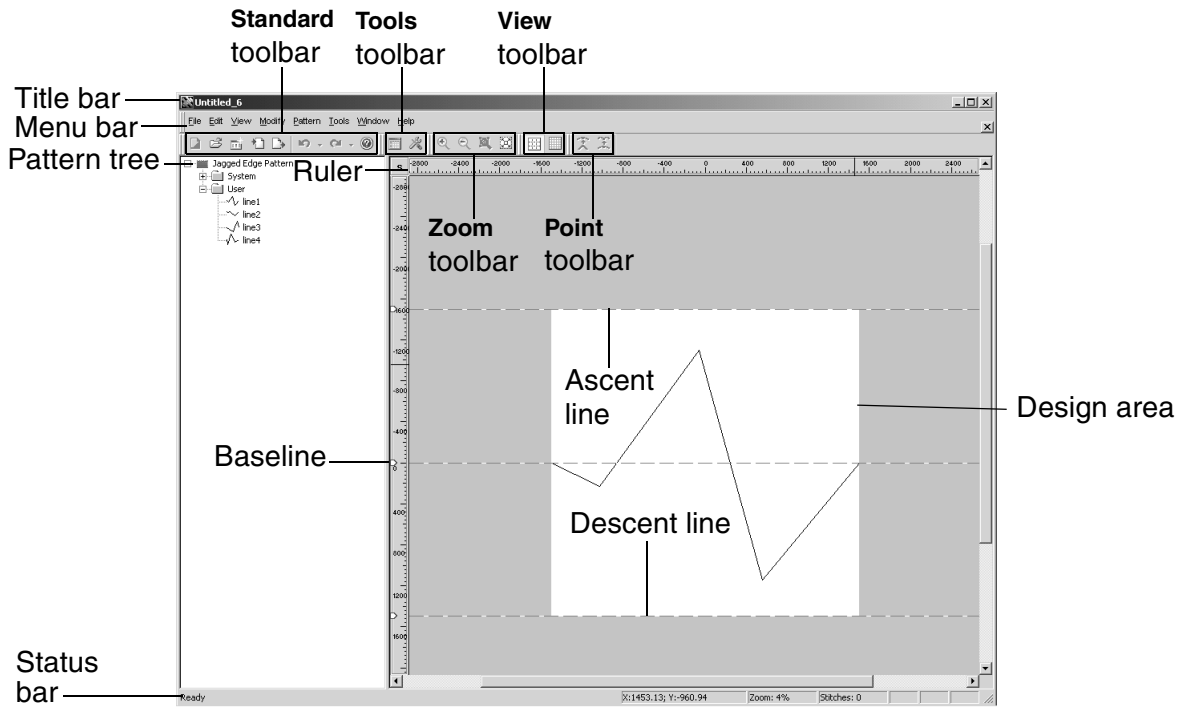
With the Jagged Edge Pattern Design module, design original jagged edge stitches to give the stitching in your embroidery a different texture.

To start up the Jagged Edge Pattern Design module:

- Click the **Jagged Edge Pattern Design** icon (). The main window for the Jagged

Edge Pattern Design module appears.

Figure 44



NOTE: The ascent line indicates the highest point in the pattern, the baseline shows the center, and the descent line indicates the lowest point in the pattern.

■ Starting up the PS-300A Design module

The PS-300A Design module can be used for creating new embroidery designs specific for an embroidering machine in a list of various models.

To start up the PS-300A Design module:


- 1 Click the **PS-300A Design** icon (). The **Machine Model Setting** dialog box appears.

Figure 45: Machine Model Setting dialog box

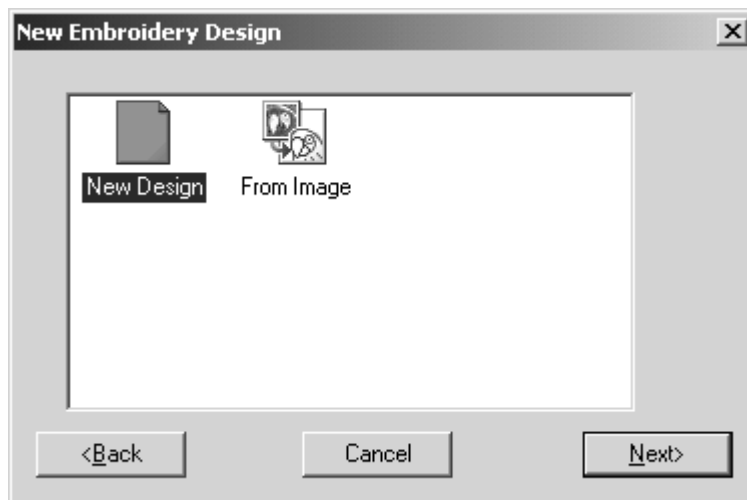
{!!Machine Model Setting dialog box??!!}

- 2 Select the model of the embroidering machine that you are creating a design for, and then click the **Next** button.

NOTE: The hoop area size and other file settings are determined by the model that is selected. Be sure to select the correct embroidering machine model.

The **New Embroidery Design** dialog box appears.

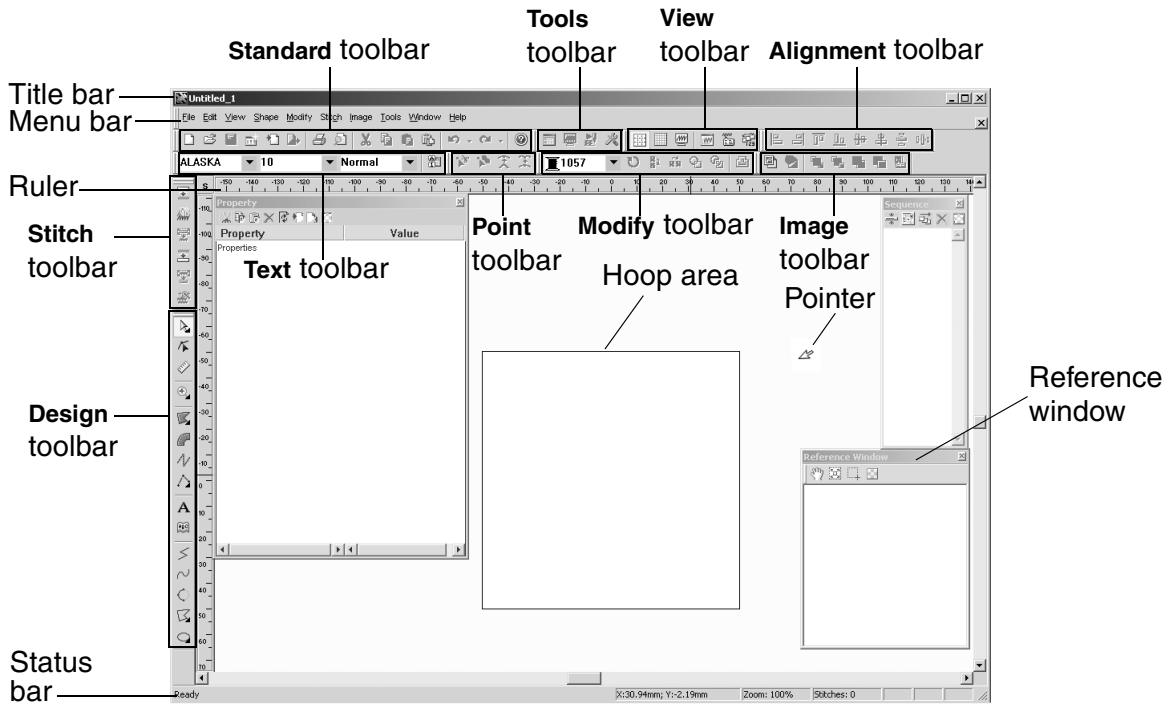
Figure 46: New Embroidery Design dialog box



3 Do one of the following:

- ◆ To create an embroidery design from scratch, click the **Blank Design** icon, and then click the **Next** button. The main window for the PS-300A Design module appears.

Figure 47



- ◆ To create a new stitch pattern based on one of those that already exist, click the **Pattern** icon, and then click the **Next** button. The **New Pattern Design** dialog box appears.

Figure 48: New Pattern Design dialog box

{!!New Pattern Design dialog box??!!}

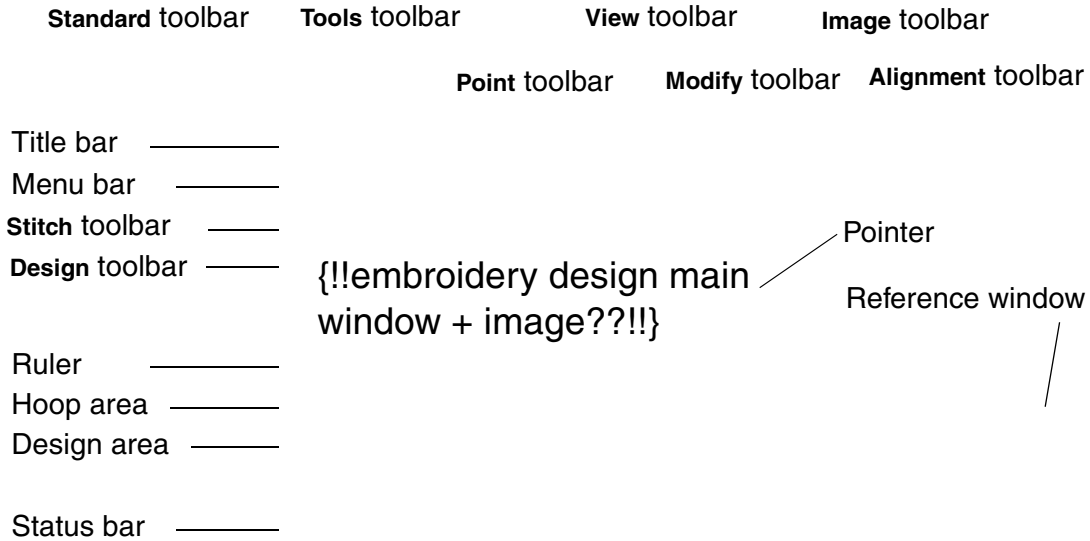
Select the pattern that you wish to base the new pattern on, and then click the **Next** button. The **Pattern Parameter Setting** dialog box for the selected pattern, similar to the one shown below, appears.

Figure 49: Pattern Parameter Setting dialog box

{!!Pattern Parameter Setting dialog box??!!}

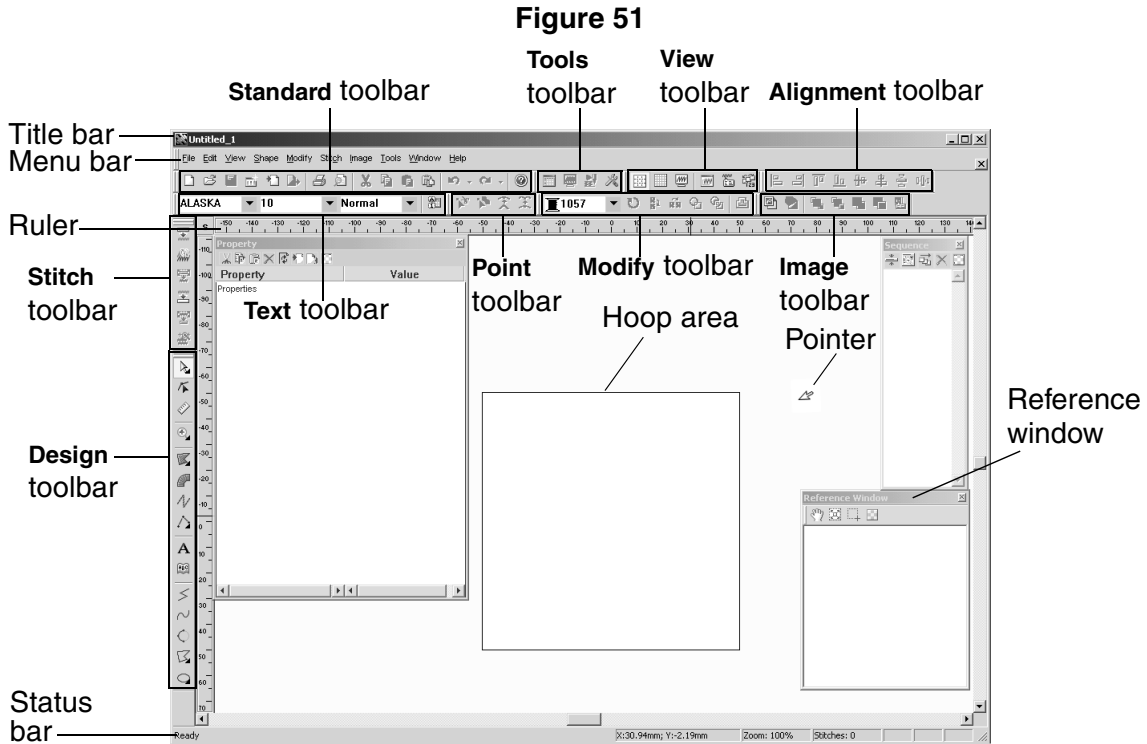
Adjust the parameters for the pattern as desired, and then click the **OK** button. The selected pattern appears in main window for the PS-300A Design module.

Figure 50



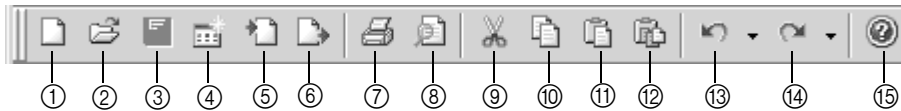
Chapter 4: Main Window

The main windows of the various modules contain some or all of the following toolbars described below.



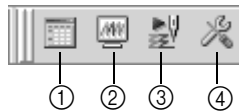
Refer to the illustrations below to identify the components of each of the various toolbars.

Figure 52: Standard toolbar



- | | | |
|---------------------------|----------------------------------|---------------------------------|
| ① New button (page 49) | ⑦ Print button (page 51) | ⑫ Select Paste button (page 52) |
| ② Open button (page 50) | ⑧ Print Preview button (page 51) | ⑬ Undo button (page 52) |
| ③ Save button (page 50) | ⑨ Cut button (page 51) | ⑭ Redo button (page 53) |
| ④ Wizard button (page 50) | ⑩ Copy button (page 52) | ⑮ Help button (page 53) |
| ⑤ Import button (page 51) | ⑪ Paste button (page 52) | |
| ⑥ Export button (page 51) | | |

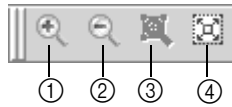
Figure 53: Tools toolbar



- | | | |
|------------------------------------|------------------------------|--------------------------------|
| ① Thread Database button (page 54) | ③ Slow Draw button (page 54) | ④ Environment button (page 54) |
| ② Realistic button (page 54) | | |

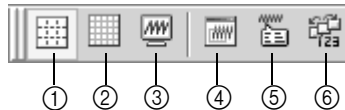
Figure 54: Zoom toolbar

NOTE: This toolbar is only available in the Gradation Pattern Design and Jagged Edge Pattern Design modules.



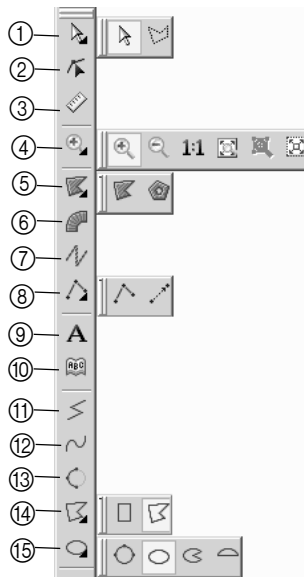
- ① Zoom In button (page 55)
- ② Zoom Out button (page 55)
- ③ Fit Select button (page 55)
- ④ Fit Window button (page 55)

Figure 55: View toolbar



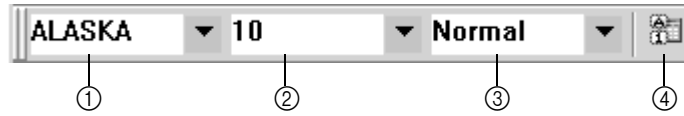
- ① Reference Lines button (page 56)
- ② Gridlines button (page 56)
- ③ Pseudo 3D button (page 56)
- ④ Reference Window button (page 56)
- ⑤ Property button (page 57)
- ⑥ Sequence button (page 57)

Figure 56: Design toolbar



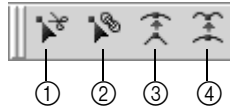
- ① Select & Lasso buttons (page 58)
- ② Select Point button (page 58)
- ③ Measure button (page 58)
- ④ Zoom In, Zoom Out, Actual Size, Fit Hoop, Fit Select & Fit Window buttons (page 58)
- ⑤ Fill & Hole buttons (page 59)
- ⑥ Column button (page 59)
- ⑦ Running button (page 60)
- ⑧ Stitch & Feed buttons (page 60)
- ⑨ Text button (page 60)
- ⑩ Text Gallery button (page 60)
- ⑪ Straight Line button (page 60)
- ⑫ Curve button (page 60)
- ⑬ Arc button (page 61)
- ⑭ Rectangle & Polygon button (page 61)
- ⑮ Circle, Ellipse, Pie & Arch buttons (page 61)

Figure 57: Text toolbar



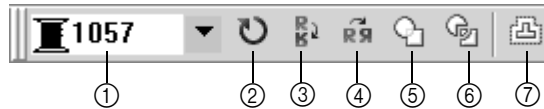
- ① **Font** drop-down list (page 62)
- ② **Font Size** drop-down list (page 62)
- ③ **Font Style** drop-down list (page 62)
- ④ **Template** button (page 63)

Figure 58: Point toolbar



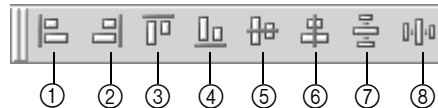
- ① **Split** button (page 64)
- ② **Connect** button (page 64)
- ③ **Smooth** button (page 64)
- ④ **Cusp** button (page 65)

Figure 59: Modify toolbar



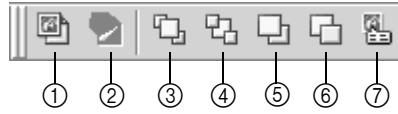
- ① **Thread Color** drop-down list (page 66)
- ② **Rotate** button (page 66)
- ③ **Vertical Flip** button (page 66)
- ④ **Horizontal Flip** button (page 67)
- ⑤ **Union** button (page 67)
- ⑥ **Separating Overlap** button (page 67)
- ⑦ **Offset** button (page 67)

Figure 60: Alignment toolbar



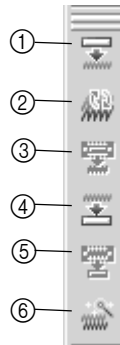
- ① **Align Left** button (page 68)
- ② **Align Right** button (page 68)
- ③ **Align Top** button (page 68)
- ④ **Align Bottom** button (page 69)
- ⑤ **Vertical Center** button (page 69)
- ⑥ **Horizontal Center** button (page 69)
- ⑦ **Vertical Equal Space** button (page 69)
- ⑧ **Horizontal Equal Space** button (page 69)

Figure 61: Image toolbar



- ① **Import from File** button (page 71)
- ② **Import from TWAIN Device** button (page 71)
- ③ **Bring to Front** button (page 71)
- ④ **Send to Back** button (page 72)
- ⑤ **Bring Forward** button (page 72)
- ⑥ **Send Backward** button (page 72)
- ⑦ **Property** button (page 72)

Figure 62: Stitch toolbar



- ① **Generate All** button (page 73)
- ② **Generate Update** button (page 73)
- ③ **Generate Selected** button (page 73)
- ④ **Clear All** button (page 74)
- ⑤ **Clear Selected** button (page 74)
- ⑥ **Stitch Wizard** button (page 74)

Chapter 4: Uninstalling the Software

To remove the software from your computer:

- 1 Quit the application.
- 2 Insert the enclosed CD-ROM into the computer's CD-ROM drive. The Brother Stitch Softwares Setup Wizard for installing the software starts up, and then a dialog box automatically appears, allowing you to select what to install.

Figure 63: Brother Stitch Softwares Setup Wizard dialog box

{!!Brother Stitch Softwares
dialog box!!}

NOTE: If the dialog box does not automatically appear, double-click **My Computer** on the desktop, and then double-click the CD-ROM drive containing the CD-ROM. (For Windows[®] XP, click **My Computer** in the Start menu, and then double-click the CD-ROM drive containing the CD-ROM.) Next, double-click **Setup.exe** to display the dialog box.

- 3 Click the **Install** button. A dialog box appears, allowing you to select whether to repair or uninstall the software.

Figure 64: Brother Stitch Softwares Setup Wizard dialog box

{!!Brother Stitch Softwares
dialog box!!}

- 4 Select **Remove Brother Stitch Softwares**, and then click the **Finish** button. The software is removed, and then a dialog box appears, indicating that the uninstallation is finished.
- 5 Click the **Close** button.
- 6 Restart the computer.????

