



Stitching Perfection

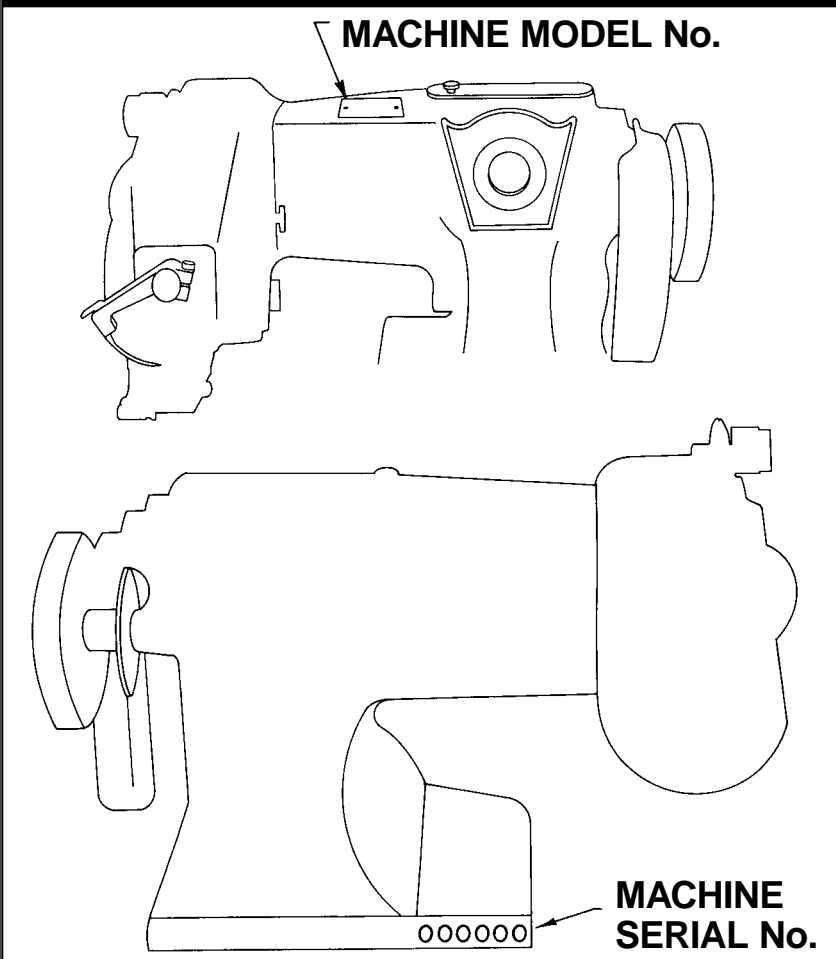
U.S. BLINDSTITCH MACHINE COMPANY

IS A DIVISION OF NEW YORK SEWING MACHINE ATTACHMENT CORP.

PARTS CATALOG

SERIES: 1118, 1099, 718, 99
STANDARD SUBCLASSES

BE SURE TO SPECIFY MACHINE MODEL
AND SERIAL No. WHEN ORDERING PARTS



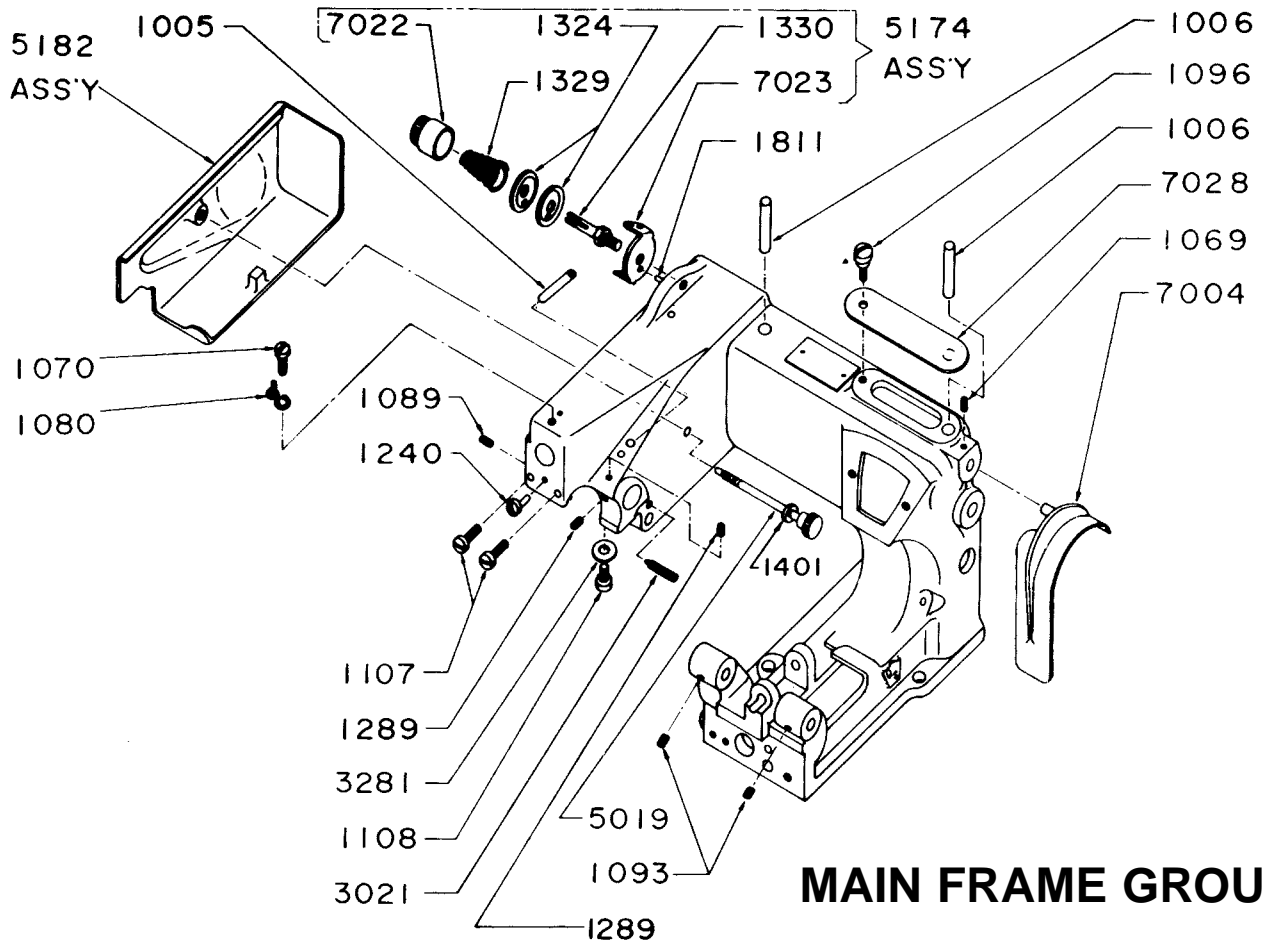
2011-15 85th Street, North Bergen, NJ 07047

Tel: 201-809-2009 • 1-800-225-2852 • FAX: 201-861-9201

e-mail: sewingmachines@usblindstitch.com • www.usblindstitch.com

MAIN FEED FRAME GROUP FOR 718-99

- | | | | |
|------|------------------------------------|------|------------------------|
| 5182 | Side Cover Assembly | 1093 | Screw, Set |
| 1401 | Washer Clamp Screw | 1289 | Screw, Set |
| 5019 | Screw Side Cover | 1240 | Pin, Presserfoot |
| 7004 | Guard, Belt | 1089 | Screw, Set |
| 1069 | Screw, Guard | 1081 | Plate, Top Cover |
| 5174 | Thread Tension Regulating Assembly | 1096 | Screw, Top Cover |
| | Consists of: 7023 Thread Guide | 1107 | Screw, Bridge Mounting |
| | 1324 Disc Thread Tension | 3281 | Washer, Clamp Screw |
| | 1330 Post, Thread Tension | 1080 | Thread Guide |
| | 1329 Spring, Tension | 1070 | Screw, Thread Guide |
| | 7022 Nut, Tension | 1010 | Nut |
| | 1811 Pin, Spring | 1329 | Spring |
| 3021 | Screw, Feed Lever Plate | 1084 | Thread Guide |
| 1005 | Tube, Oil | 1083 | Tension Disc (2 Used) |
| 1205 | Window Plate | 1082 | Tension Post |



MAIN FRAME GROUP

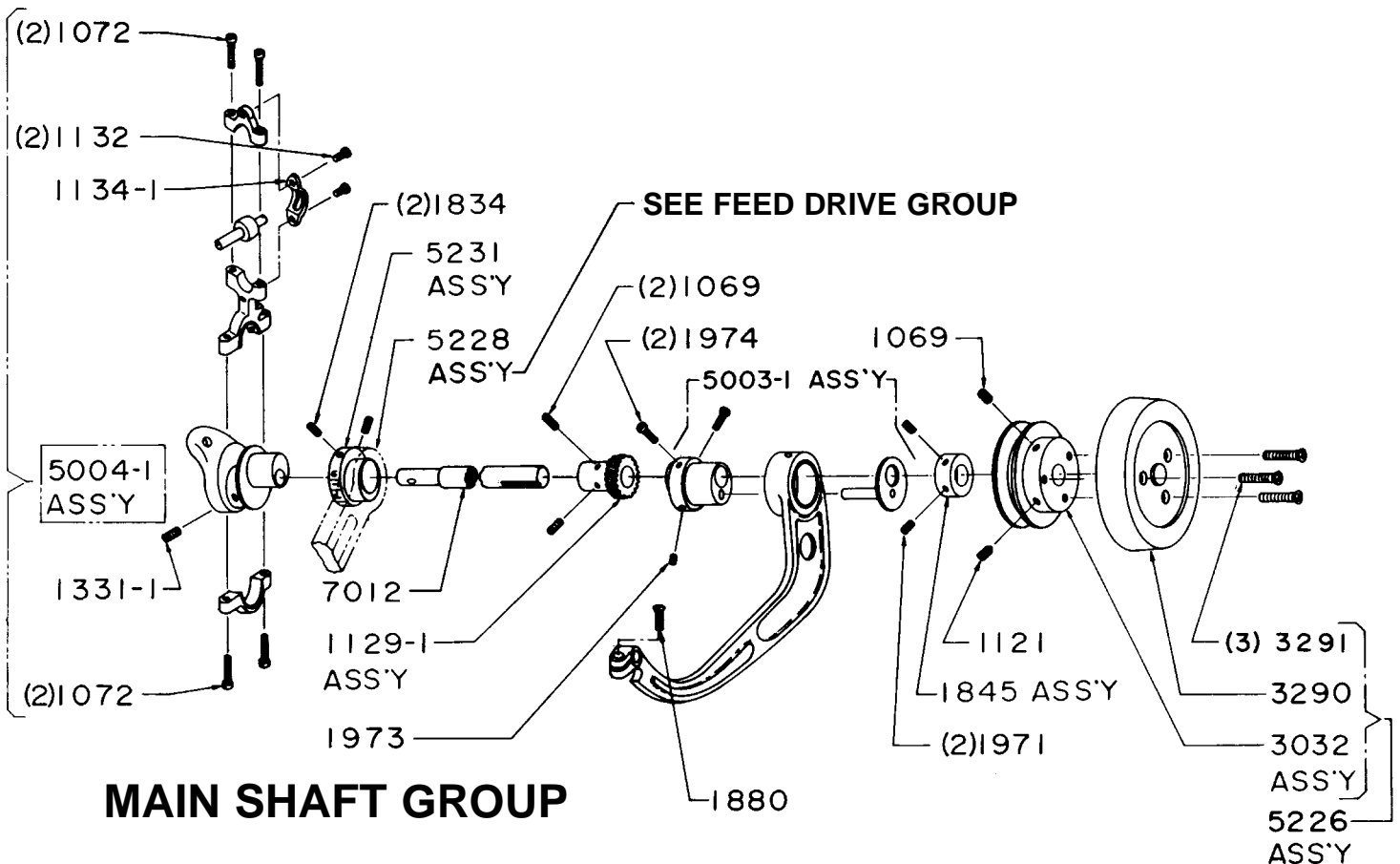
MAIN SHAFT GROUP

- 1044 MAIN SHAFT for 718 & 99 SERIES
- 7012 Main Shaft
- 5003-1* Rib Connection Lever & Eccentric Assembly
 - 1974 Screw Eccentric
 - 1973 Screw for Stud
 - 1880 Screw, Clamp
- 5004-1* Needle Connection Assembly for 99BL or 99PB-1 1288/1
 - 1072 Screw
 - 1134-1 Guard
 - 1132 Screw
 - 1132-1 Screw
- 5231 Stitch Collar Assembly, Regular
 - 1834 Set Screw

- 1129-1 Gear Spiral 2 to 1 Ratio
- 1069 Screw
- 1845 Collar Assembly
- 1971 Screw
- 5226** Handwheel Assembly
- 3290 Handwheel
- 3291 Screw
- 3032 Pulley Assembly
- 1121 Screw
- 1069 Screw

****The Following Optional Handwheel Assemblies Are Available:**

- 5188-1 Handwheel with Position Hub
- 5240 Handwheel Double Pulley Assembly
- 5253 Handwheel Double Pulley Positioner Hub Assembly Post



NEEDLE DRIVE GROUP FOR 1118, 1099, 718 & 99 SERIES

- 5082 Needle Lever Assembly
- 1076 Screw
- 3050 Screw
- 1137 Clamp
- 1234 Pin
- 1136 Lever

- 5135 Collar Assembly
- 1089 Screw
- 1095 Shaft
- 1118 Screw

NEEDLE SIZES AVAILABLE

USE GENUINE U.S. BLINDSTITCH NEEDLES FOR BEST RESULTS

Long Needles - System 251

Regular Point Needles

- 00
- 10
- 15
- 20
- 25
- 30
- 35
- 40
- 55

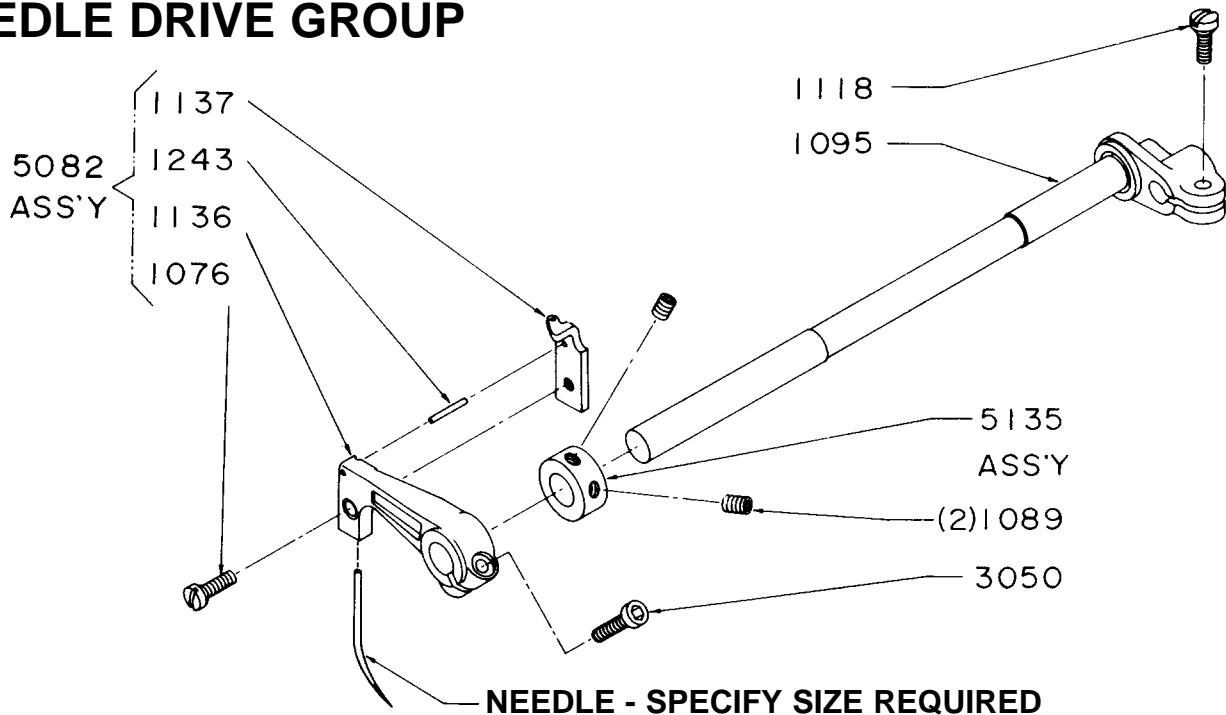
Ball Point Needles

- 10
- 15
- 20
- 25

Spear Point Sizes

- 10
- 15
- 20
- 25
- 30
- 35
- 65

NEEDLE DRIVE GROUP



FEED DRIVE GROUP FOR 99CS1HH SERIES

- 5208 Feed Lever & Stitch Collar Assembly *(Sold as Assembly only)*
- 5016 Feed Rocker Assembly
- 3019 Feed Lever Plate
- 3021 Screw - Lever Plate
- 1821 Thrust Collar Assembly
- 1870 Screw Set
- 2100* Feeder
- 1119 Feeder

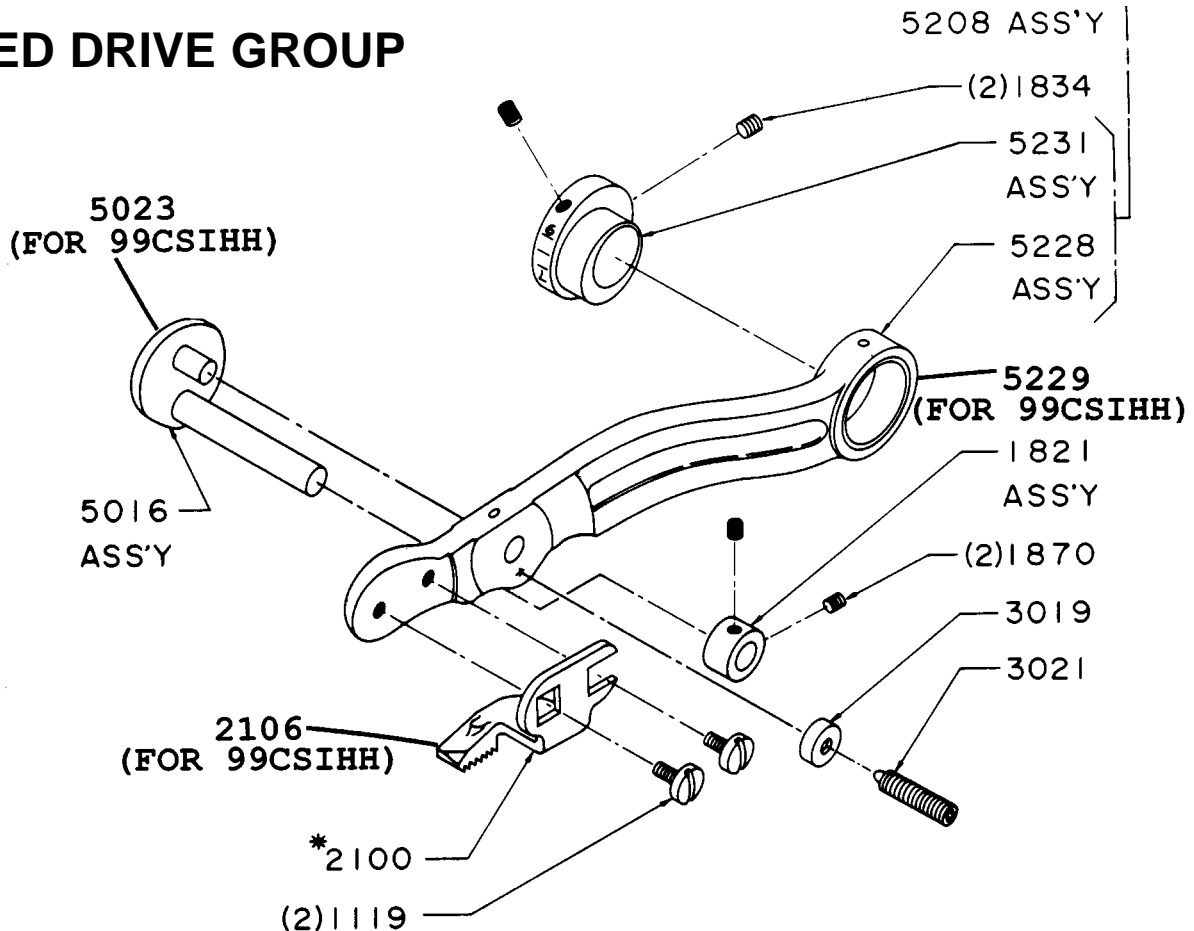
*Types Collar of Feeders Available

- Fine 2101
- Armoloyd 2125
- Carbide 2119
- Rubber 2120

TABLE

Model	Feed Rocker Assembly	Feed Lever Stitch Collar Assembly	Feed Lever Assembly	Stitch Collar Assembly	Feeder
1099-CS-1-HH	5023	5211	5229	5232	2106
B1099-CS-1-HH	5023	5211	5229	5232	2106
F1099-CS-1-HH	5023	5211	5229	5232	2106
S1099-CS-1-HH	5023	5211	5229	5232	2106
1099PBW-1	5016	5208	5228	5232	2106
1099T	5016	5208	5228	5231	2100*
1099-T-1	5023	5209	5228	5232	2106
1099-WB	5016	5208	5228	5231	2100*
1099-WB-1	5016	5208	5228	5231	2100*

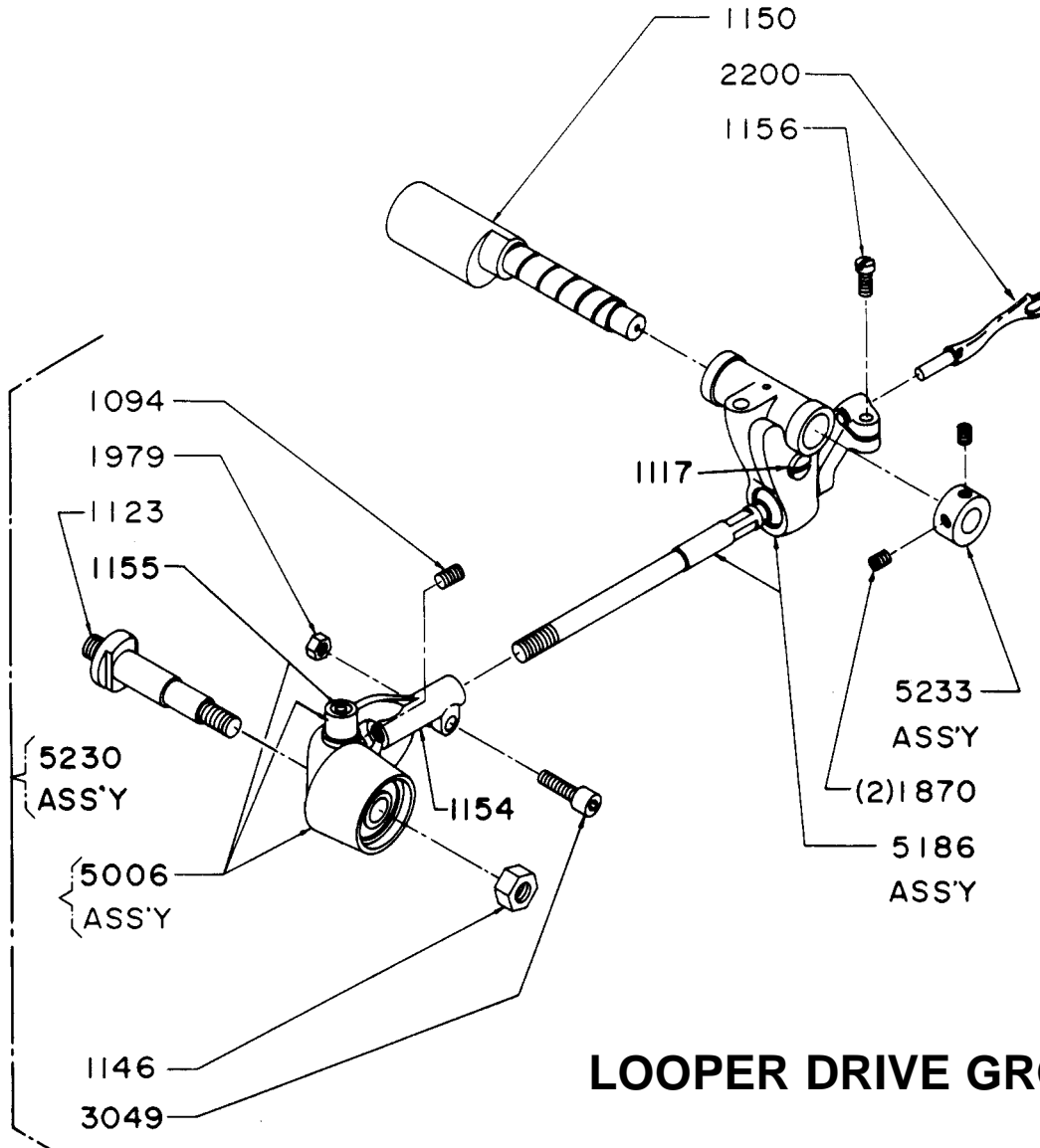
FEED DRIVE GROUP



LOOPER DRIVE GROUP

Part No.	Description
2201	For 1099CS-1-HH Heavy Duty Machine Only
2200	Looper
1150	Stud, Looper Adjustment
5233	Collar Assembly
1870	Set Screw
5230	Looper Rod Fork, Sleeve & Stud Assembly Consists of: 1154 Fork, 1155 Pin, 3049 Screw
5006	Looper Rod Sleeve Assembly (Not Sold Separately)

Part No.	Description
5213	Looper Rod & Fork Assembly Consists of: 5185 Looper Rod & Ball Assembly 1154 Fork, 3049 Screw, 1979 Nut
5186	Looper Rod & Carrier Assembly Consists of: 5017 Looper Rod Carrier Assembly 1117 Screw, 5185 Looper Rod & Ball Assembly
5026	Looper Rod, Fork & Carrier Assembly Consists of: 5186 Assembly, 1154 Fork, 3049 Screw, 1979 Nut



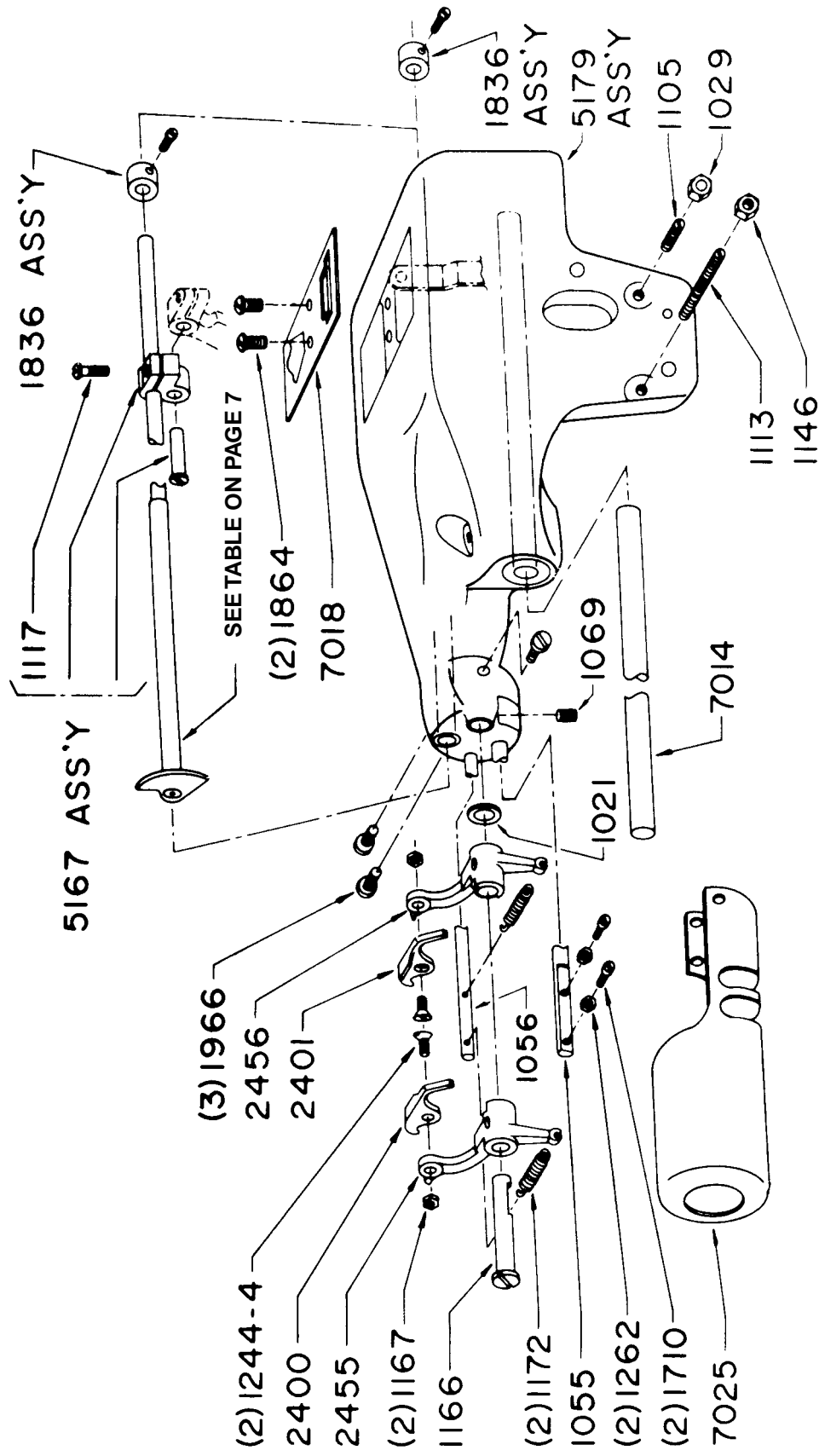
LOOPER DRIVE GROUP

FEED FRAME GROUP I

5179	Feed Frame Assembly	1167	Nut Platten Lock
1836	Collar Assembly	2450	Platten Bracket - Right (718-99)
1079	Set Screw	2451	Platten Bracket - Left (718-99)
5167	Rib Shaft Crank Assembly	2455	Bracket, Left Hand Platten (718CC)
1117	Screw	2456	Bracket, Right Hand Platten (718CC)
1088	Rib Shaft Bushing - Right	1166	Stud
1087	Rib Shaft Bushing - Left	1069	Screw
6001	Rib Shaft Assembly (718-1, 718-9)	1021	Spacer: 1021-1 = .010"
6007	Rib Shaft Assembly (718-2, 718-C)		1021-2 = .015", etc.
6008	Rib Shaft Assembly (718)	1172	Spring
6010	Rib Shaft Assembly (718C-6)	1710	Screw, Limit
6036	Rib Shaft Assembly (718-6)	1055	Post
7019	Plate, Window	2401	Platten Right Hand
1864	Screw, Plate	1113	Screw, Frame
1056	Post, Spring	1105	Screw, Skip Stitch Compensating
1262	Nut	7025	Cylinder
2400	Platten, Left Hand	1211	Cylinder (718-99)
1244-4	Screw, Platten	1101	Cylinder (718-C6)
1146	Nut	7014	Shaft, Rocker
1029	Nut	1205	Window Plate
1966	Screw, Cylinder	1030	Screw Window Plate Attaching
		1066	Shaft Main (718-99)

TABLE

Model	Rib Shaft Assembly	Model	Rib Shaft Assembly
1118	8008	718-99	6008
1118-C	8007	718-99	6007
1118-K	8004	718-99	6004
1118-N	8008	718-99	6008
1118-S	8000	718-99	6001
1118-1	8001	718-99	6007
1118-2	8007	718-99	6001
1118-9	8001	718-99	—



FEED FRAME GROUP I

FEED FRAME GROUP I

5179	Feed Frame Assembly	2464	Platten Bracket for 99 CS118 Series
1836	Collar Assembly	<i>See Table</i>	Bracket, Left Hand Platten
5167	1079 Set Screw	<i>See Table</i>	Bracket, Right Hand Platten
	Rib Shaft Crank Assembly	<i>See Table</i>	Stud
	1117 Screw	1069	Set Screw
7018	Plate, Window	1021	Screw, Top Cover
1864	Screw, PLate	1107	Spacer: -1021-1 = .010"; -1021-2 = .015"; etc.
1056	Post, Spring	<i>See Table</i>	Spring
***1262	Nut	***1710	Screw, Limit
<i>See Table</i>	Platten, Left Hand	1055	Post
1244-4	Screw, Platten	<i>See Table</i>	Platten, Right Hand
1146	Nut	1113	Screw, Frame
1029	Nut	1105	Screw
<i>See Table</i>	Screw, Cylinder	<i>See Table</i>	Cylinder
1167	Nut, Platten Lock	7014	Shaft Rocker
2463	Platten Bracket for 99 CS118 Series		

TABLE

Model	Rib Shaft Assembly	Platten Left	Platten Right	Platten Bkt Left	Platten Bkt Right	Spring	Stud	Cylinder	Cylinder Screw
1099-CS-1-HH	8067-1	2400	2401	2473	2474	3062	1379	7025	1966
B1099-CS-1-HH	8096	Roller* 7140	2435	2473-1	2474	3065	1379-1	7025	1966
*F1099-CS-1-HH	8096	2436	2437	2482-1	2481-1	1172	1379-1	-	-
***S1099-CS-1-HH	8096	2422	Pin 3013	Pin 3013	4 Required	1172	1379	7025	1966
			2423	2482-1	2481-1				
			Pin 3013	Pin 3013	4 Required				

For 1099 Series:

1099-PBW-1	8068**	2400	2401	2473	2474	3062	1379	7025	1966
1099-T	8024**	2400	2401	2473	2474	3062	1379	-	-
1099-T-1	8024**	2400	2401	2473	2474	3062	1379	7025	1966
1099-WB	8017**	2400	2401	2466	2465	3062	1379	-	-
1099-WB-1	8021**	2400	2401	2466	2465	3062	1379	-	-

For 1099 Series:

Series:	**Rib Shaft Assembly	Rib	Rib Pawl	Rib Hub	Collar	Spring	Screw	Nut	Series:
60	8086	2081	2083	-	-	1376	1377	1881	6086
60	8084	2020	-	2021	1373	1306	1935	-	6024
60	8017	2017-1	-	2018-1	-	1307	1377	1881	6017
60	8021	2017	-	2019	-	1307	1377	1881	6021

*1995 Roller Screw

***In place of 1710 & 1262, use part numbers 1132 (2), 1114 (2), 1168 (2) and 7150

2017-1 1377
 (2017) 1881
 2018-1 1307
 (2019)

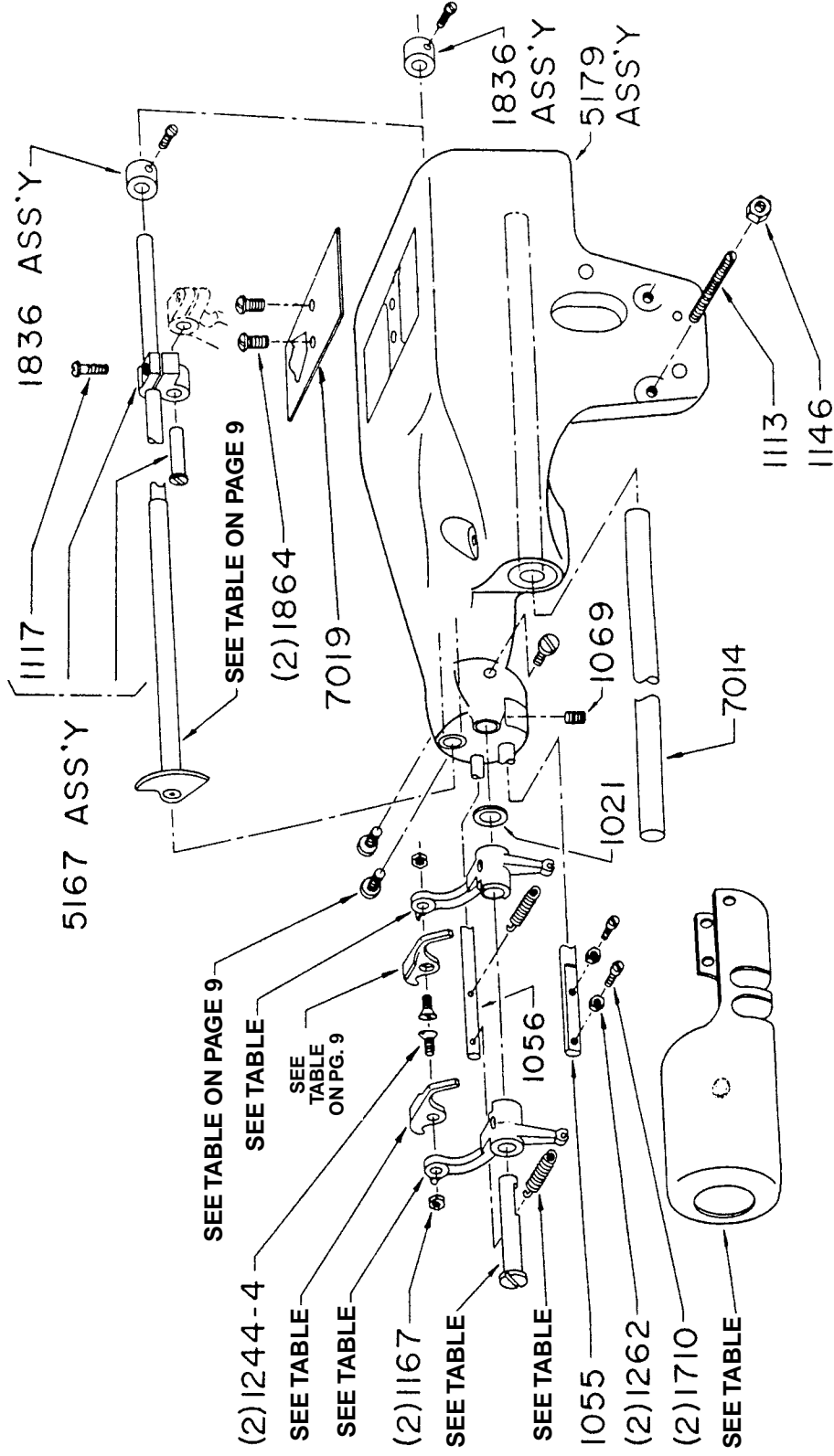
8017 ASS'Y
 (8021 ASS'Y)

2021 2020
 (2) 1935
 1373 1306

8024 ASS'Y

2081 1881
 2083 1377
 1376

8086 ASS'Y

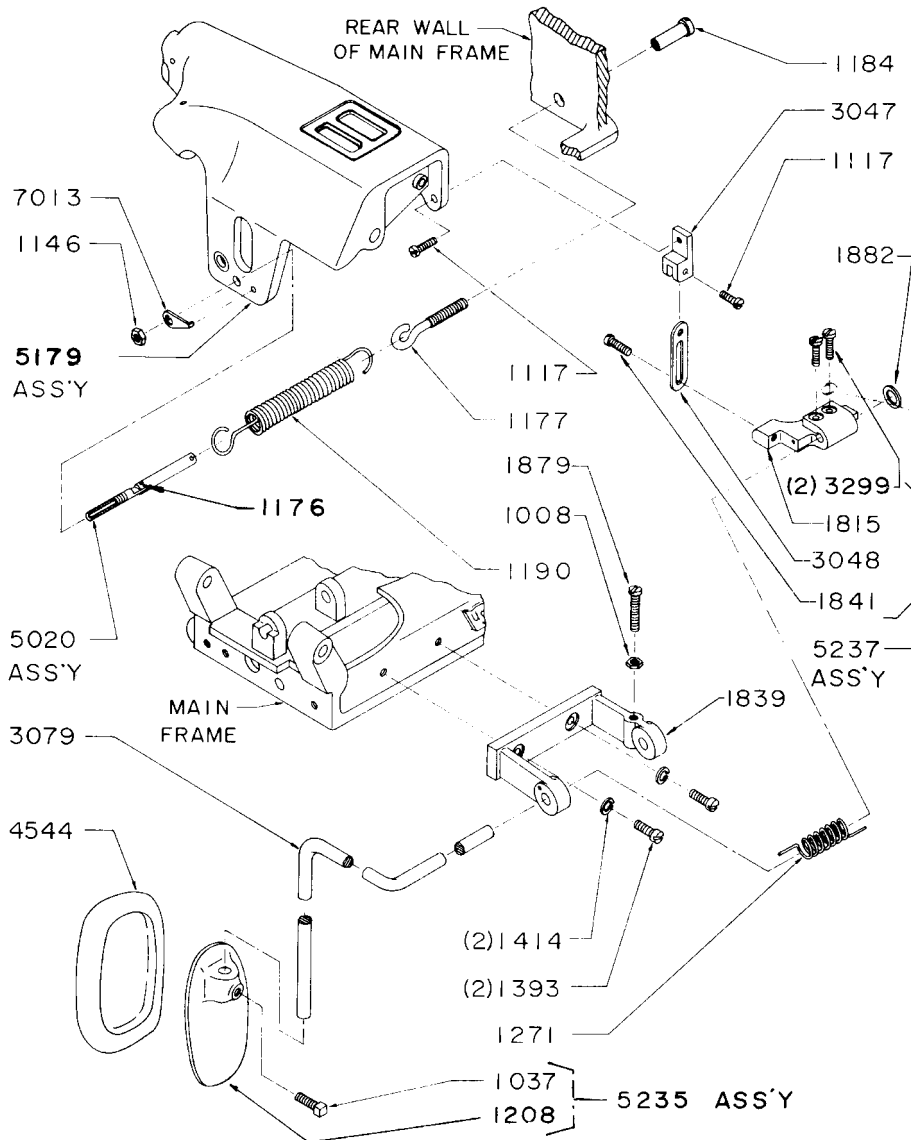


FEED FRAME GROUP I

FEED FRAME GROUP II

- 5020 Spring Link Assembly
- 1176 Pin
- 1146 Nut, Retaining
- 1177 Screw Link
- 1191 Main Spring
- 5163 Lift Arm Assembly
- 1135 Lift Arm
- 1855 Screw
- 1334 Hook
- 1120 Screw
- 1035 Screw
- 1008 Nut
- 3055 Collar Assembly
- 1992 Set Screw
- 1061 Spring

- 5235 Knee Pedal Assembly
- 1208 Knee Pedal
- 1037 Screw
- 7013 Key
- 5162-V Vertical Offset Rod
- 1838 Nut
- 4544 Pad, Pedal
- 5162-H Horizontal Rod, Knee Press
- 131-31 Pin
- 7024 Lever
- 1203 Stud (for 718)
- 1028 Washer
- 1007 Screw
- 1066 Shaft-Feed Frame Rocker
- 1202 Leather (for 718)



FEED FRAME GROUP II

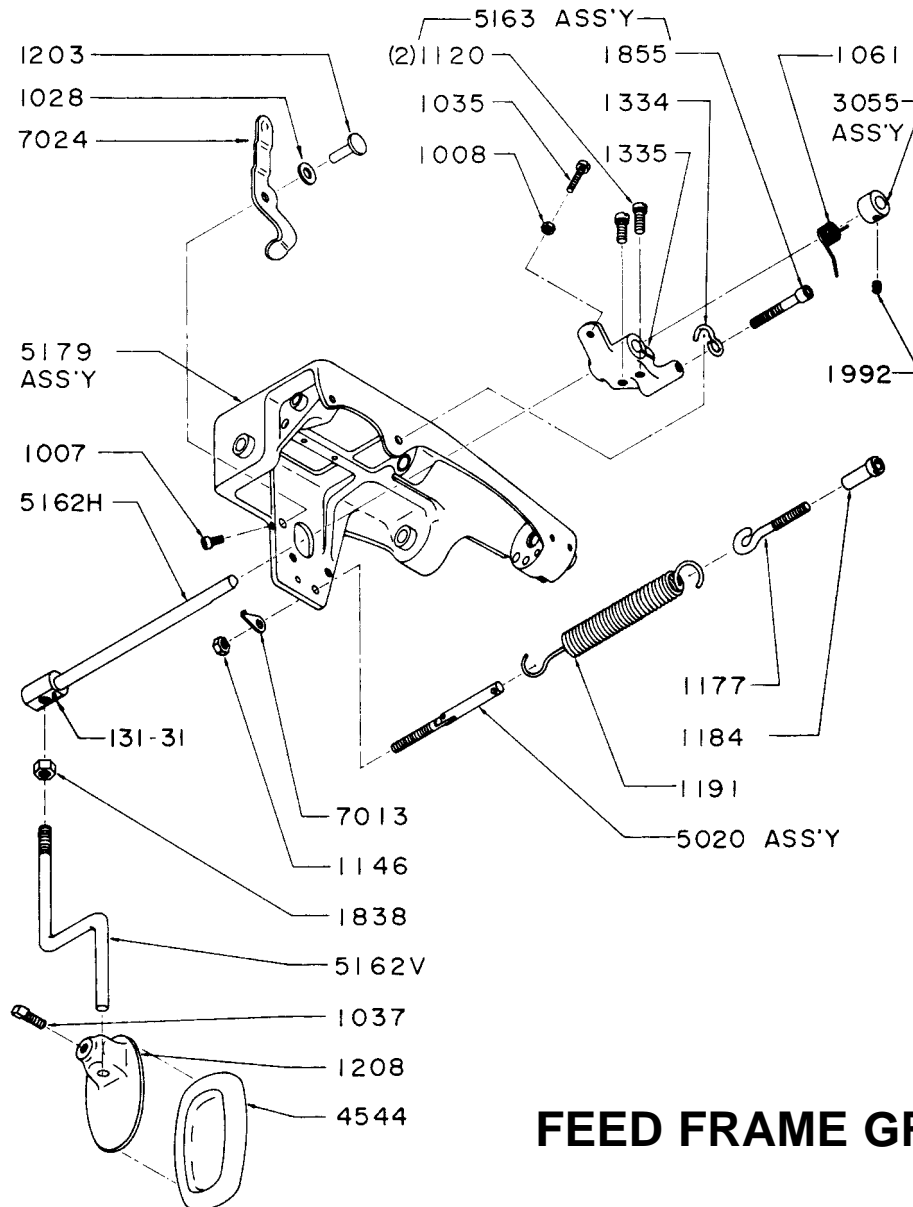
NOTE:

7006	Swing Plate	3026	Retaining Ring
1200	Swing Bracket (718 & 99 Series)	7009	Support Bracket
1051	Screw	1228	Support Bracket (718 & 99 Series)
5015	Stop Pin Assembly	1103	Screw
1227	Stop Plate	1230	Washer, Flat
1052	Screw	1229	Washer, Lock
1053	Washer	1226	Collar Assembly
1051	Set Screw	1992	Set Screw
3016	Spring Washer		
1225	Pivot Pin		

5251* Complete Swing PLate Assembly

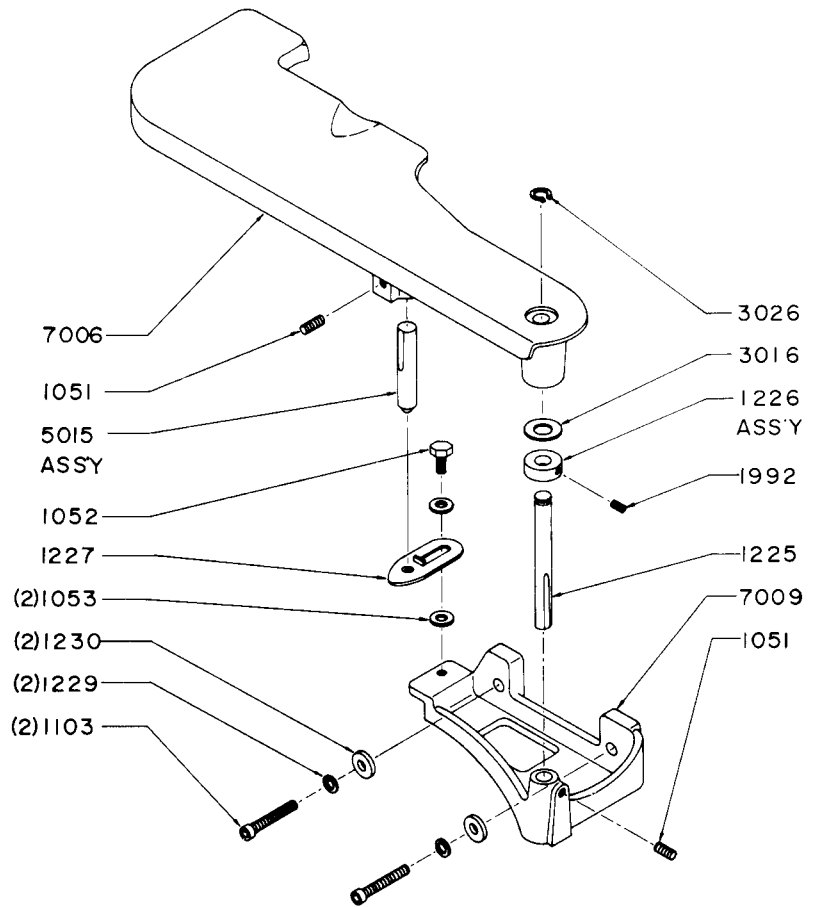
FRONT PLATE GROUP

Subclasses 1118-9, 1099-9, use stationary workplate. Complete assembly number 5264.

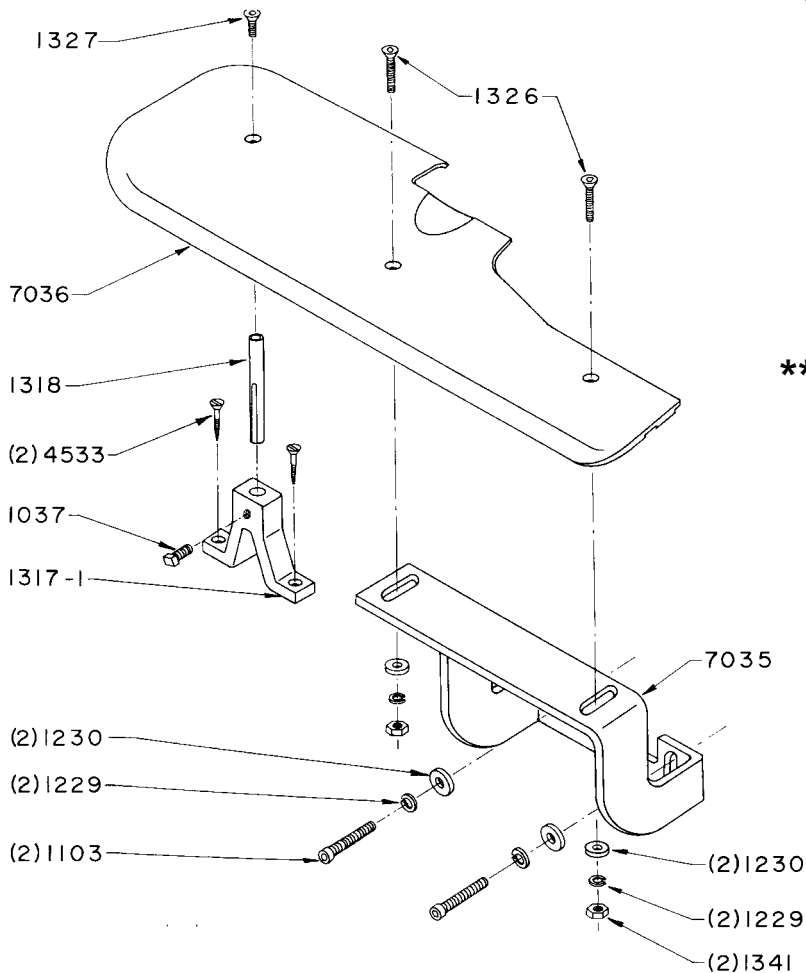


FEED FRAME GROUP II

***COMPLETE ASSEMBLY
No. 5251
FRONT PLATE GROUP
(featured at right)**



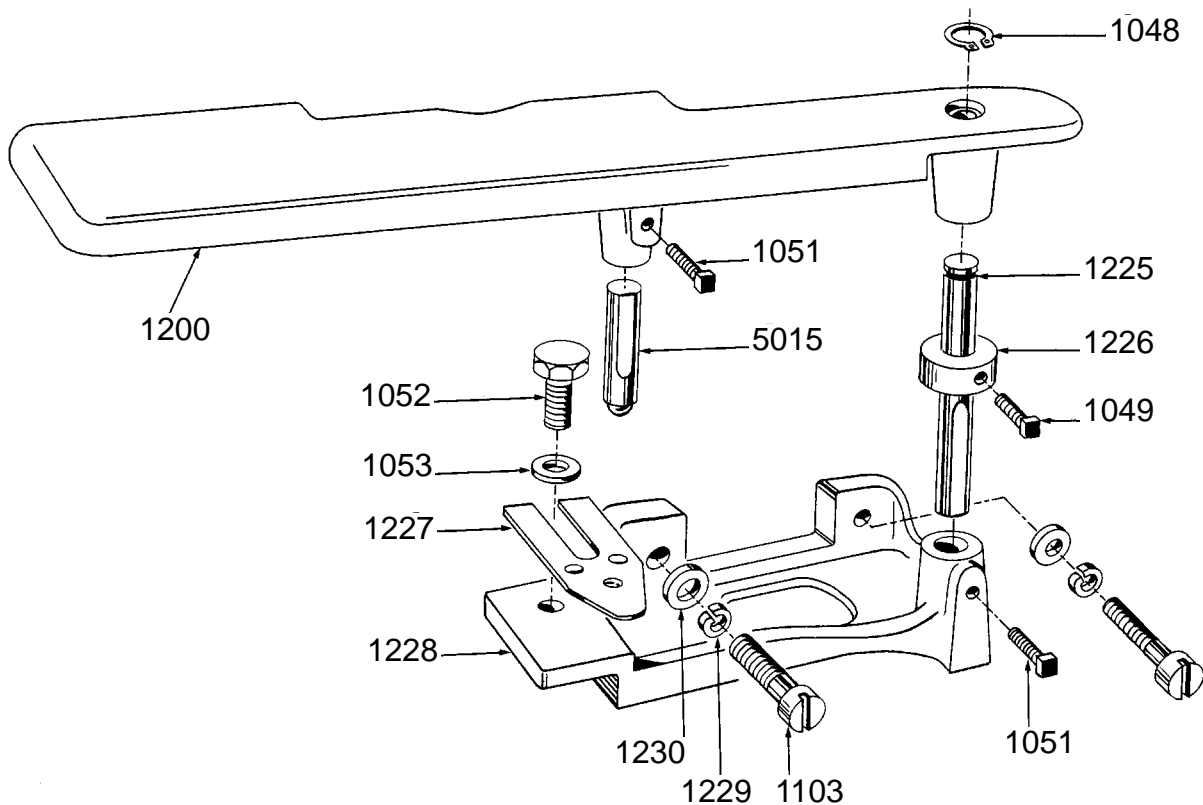
****COMPLETE ASSEMBLY
No. 5264
FRONT PLATE GROUP
(featured at left)**



FRONT PLATE GROUP FOR 718 & 99

1200*	Swing Plate	5015	Stop Pin Assembly
1225	Pivot Pin – Swing Plate	1227	Stop Plate
1048	Retaining Ring	1052	Screw – Stop Plate Attaching
1226	Collar-Swing Plate Pivot Pin	1053	Washer – Stop Plate Attaching Screw
1049	Screw-Swing Plate Pivot Pin Collar-Set	1051	Screw – Stop Pin-Lock
1228	Bracket – Swing Plate-Support	1051	Screw – Swing Plate Pivot Pin-Lock
1103	Screw-Swing Plate Support Bracket-Attaching		
1230	Washer (Flat)-Swing Plate Support Bracket Screw		
1229	Washer (Lock)-Swing Plate Support Bracket Screw		

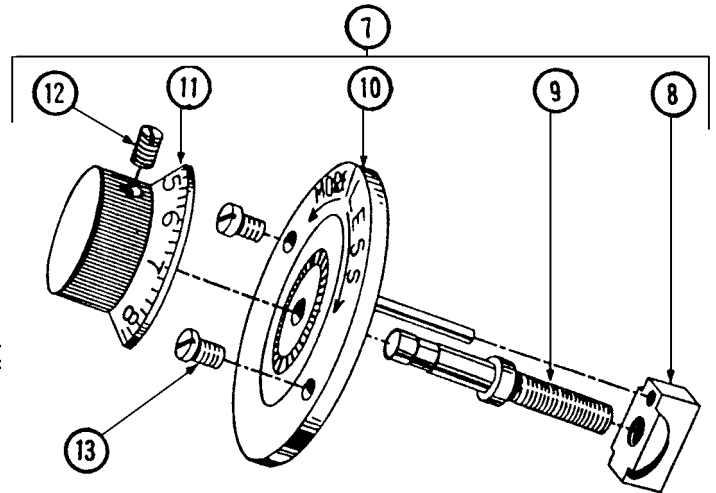
*A smaller plate for special work such as infants' wear is available as an option. Specify Part No. 1360.



FRONT PLATE GROUP FOR 718 & 99

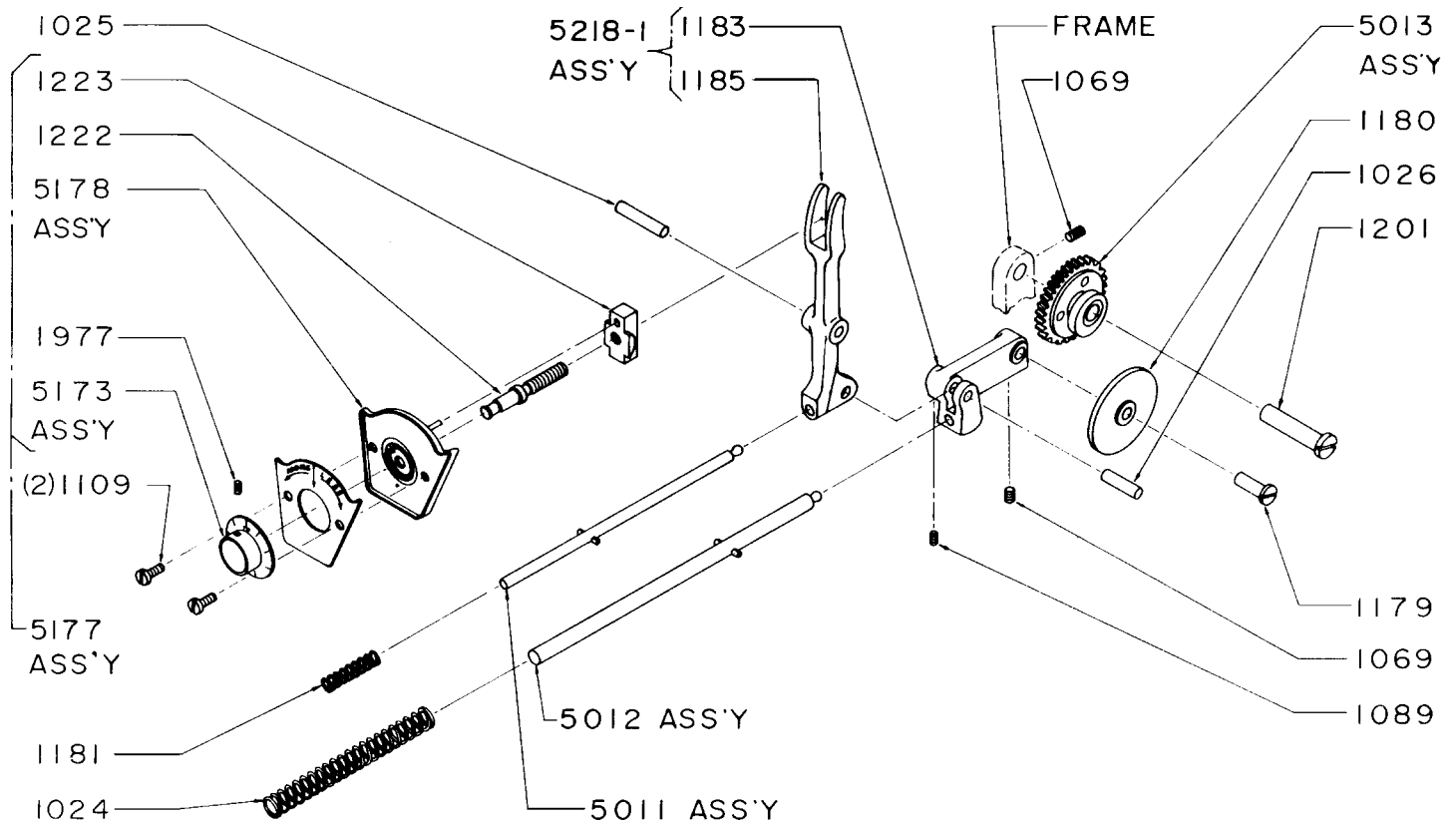
REGULATING GROUP FOR 718 & 99 SERIES

- 7. 5018 Regulating Dial Assembly
- 8. 5018 Regulating Dial Shoe
- 8. 1222 Regulating Dial Shoe
- 9. 5010 Face Plate & Guide Pin Assembly
- 10. 5039 Dial and Ratchet Assembly
- 11. 5039 Screw-Dial and Ratchet Assembly Lock
- 12. 1109 Screw-Regulating Dial Assembly Attaching



REGULATING GROUP FOR 1118 & 718 SERIES

- 1201 Pin, Pivot, Gear
- 1069 Set Screw
- 1180 Cam Follower
- 1179 Pin, Pivot, Follower
- 1169 Set Screw
- 1183 Support Arm
- 1026 Pin, Pivot, Arm
- 1089 Set Screw
- 1185 Regulating Fork
- 5012 Push Rod Assembly
- 1023 Pin 1024 Spring
- 5013 Gear Assembly, Skip Stitch - 2:1 Ratio
- 5177 Gear Assembly - Complete
- 1109 Screw Regulator
- 5173 Dual & Ratchet Assembly
- 1123 Shoe 1222 Screw 1977 Screw
- 1025 Pin
- 5011 Push Rod Assembly
- 1022 Pin 1181 Spring



PRESSER-FOOT ASSEMBLY GROUP I FOR 718 & 99 SERIES

COMPLETE ASSEMBLY (See Table Below)

PARTIAL ASSEMBLY (See Table)

Presser Foot Assembly (*Partial*)

Consists of:

(*See Table*) Presser Foot

2900 Pin - "Chain-Off"

1866 Screw

1238 Needle Guide

1102 Screw

1933 Screw

(*See Table*) Shoe

3067 Wedge

1075 Screw

3068 Bushing, Shoe Adjustment

1133 Screw

1237 Pin

1832 Spring

1976 Set Screw

1242 Bracket

1099 Screw

2600 Guide

1079 Screw

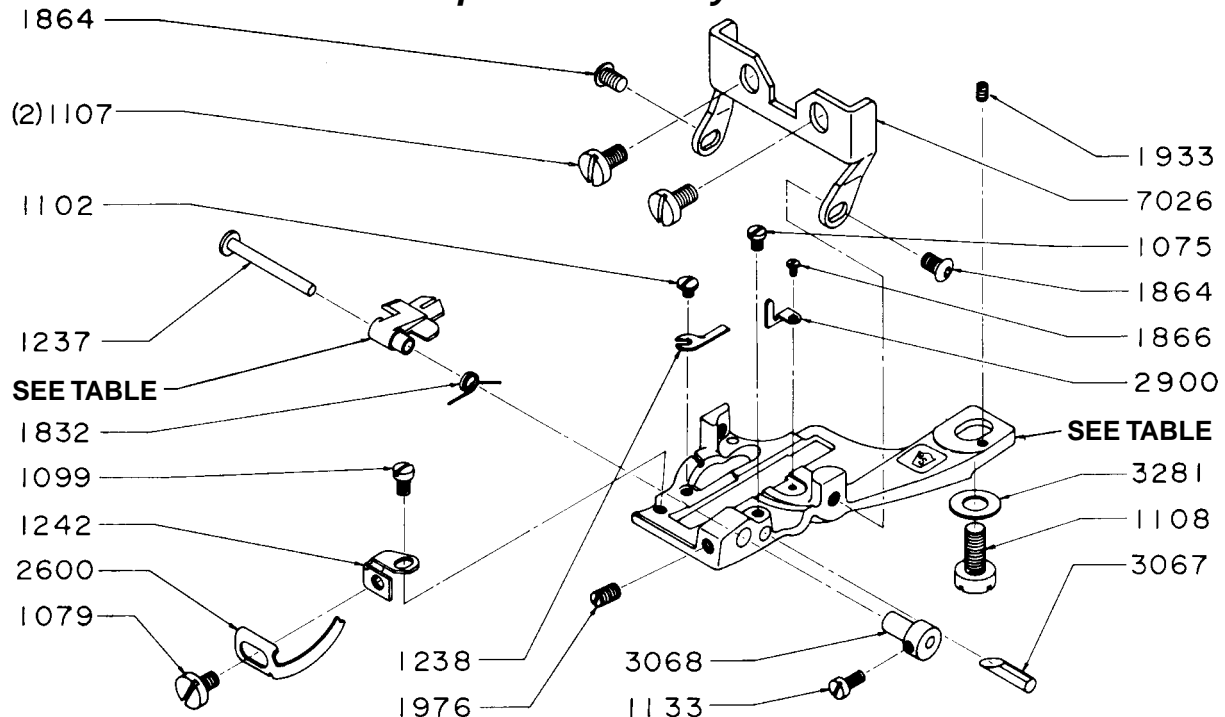
1107 Screw, Bridge Mount

7026 Bridge

Model	Shoe	TABLE Presser Foot	Partial Assembly	Complete Assembly
1118	2553	2351	8501	8601
1118-C	2550	2350	8500	8600
1118-K	2550	2350	8500	8600
1118-N	2554	2352	8502	8602
1118-1	2550	2350	8500	8600
1118-2	2550	2350	8500	8600
1118-9	2550	2350	8500	8600

PRESSER-FOOT ASSEMBLY GROUP I

Partial and Complete Assembly – See Table Above



PRESSER FOOT GROUP II

COMPLETE ASSEMBLY (See Table)

PARTIAL ASSEMBLY (See Table)

Presser Foot Assembly (*Partial*)

Consists of:

(See Table) Presser Foot

(See Table) PIN – “Chain-Off”

1866 Screw

1238 Needle Guide

1102 Screw

1933 Screw

(See Table) Shoe

1308

Screw

1372

Spring

1075

Screw

1305

Spring

1133

Screw

3067

Wedge

(See Table) Pin

(See Table)

Bushing, Shoe Adjustment

(See Table) Bracket

3025

Spring

1099

Screw

1976

Set Screw

1079

Screw

(See Table)

Guide

7026

Bridge

1107

Screw, Bridge Mount

1099

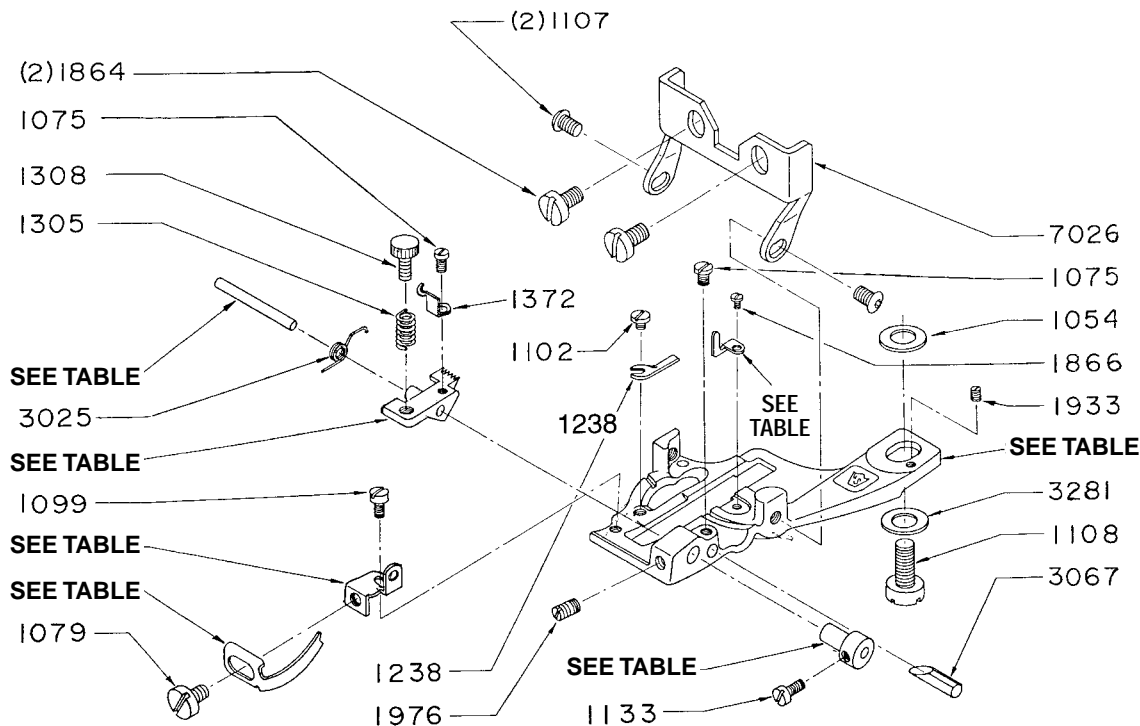
Screw

1864

Screw

TABLE

Model	Shoe	Shoe Assembly	Anchor	Shoe Pin	Bushing	Guide	Chain-Off Pin	Presser Foot	Partial Assembly	Complete Assembly
1099-CS-1-HH	2540	5215	3024-1	3294	7210	2606	1831	2373	8503	8603
B1099-CS-1-HH	2541	5216	3024-1	3294	7210	2606	1831	2373	8503	8616
F1099-CS-1-HH	2540	5215	3024-1	3294	7210	2606	1831	2373	8503	8603
S1099-CS-1-HH	2541	5216	3024-1	3294	7210	2606	1831	2373	8503	8616
1099PBW-1	2521-1	5078-1	3024-1	3294	7210	2606	1831	2359	8509	8618
1099T	2511	5074-1	Fitted	3294	7210	-	2900	2358	8508	8619
			1418-B							
1099-T-1	2521	5078	3024-1	3294	7210	2606	2900	2359	8509	8620
1099-WB	2510	5064	Bracket	1237	3068-1	2606	2900	2352	8502	8621
			1242							
1099-WB-1	2517	5077	3024	3294	3068-1	2606	2900	2350	8500	8617



PRESSER-FOOT ASSEMBLY GROUP I

Partial and Complete Assembly – See table above

PARTS LIST FOR U.S. BLIND STITCH MACHINE MODEL 99-PR

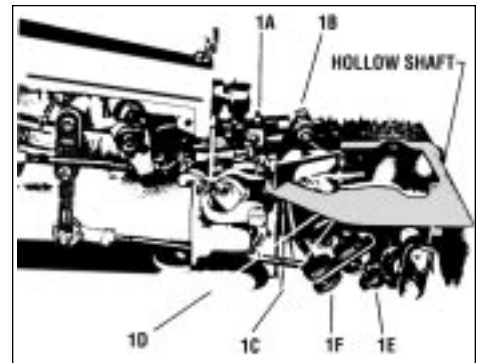
This parts list is the same as the parts list for the basic Model 99-BS with the following deletions and additions:

Group	Use Part Number	Instead of Part Number	Part Description
MAIN FRAME	None		
MAIN SHAFT	None		
NEEDLE DRIVE	None		
FEED DRIVE	- 2102	2114 2104	Feed Dog Feed Dog
LOOPER DRIVE	None		
FEED FRAME I	6002 6009 2404	6013 6013 2411	Rib Shaft Assembly Rib Shaft Assembly Platten
FEED FRAME II	None		
REGULATING	None		
FRONT PLATE	1314 1225 (1) 1048 (1) 1226 (1) 1049 (1) 1228 - - - - 5015 (1) 1051 (1) 1227 (1) 1052 (1) 1053 (1) 1051 (1) - - - -	1400 - - - - 1321 1326 1341 1054 1229 - - - - - - - - 1317 1037 1318 1327	Front Plate Pivot Pin – Front Plate Retaining Ring – Pivot Pin Collar – Pivot Pin Screw – Pivot Pin Collar-Set Bracket – Front Plate Support Screw – Front Plate Attaching Nut – Front Plate Attaching Flat Washer – Front Plate Attaching Lock washer – Front Plate Attaching Stop Pin Assembly Screw – Stop Pin-Set Stop Plate Screw – Stop Plate Attaching Washer – Stop Plate Attaching Screw – Pivot Pin-Lock Post – Front Plate Screw – Post Pin-Set Pin – Post Screw – Front Plate to Post Attaching
PRESSERFOOT	6104 - 2304 - 2505 2516 1417 (1) 1133 (1) 5035 1342 6259 6260 6261 6262 6263 6264 6265 -	6106 6107 2306 2307 - - - - - 5037 1299 - - - - - - - - - - - 6221 6222 6223 6224 6225 6226 6227 6228 6229 6230 6231 6232	Presserfoot Assembly Presserfoot Assembly Presserfoot Presserfoot Shoe – Presserfoot Shoe – Presserfoot Spring – Presserfoot Shoe Screw – Shoe Attaching Hemmer Bracket Assembly Spring-Hemmer Bracket Folder Assembly #1 Folder Assembly #2 Folder Assembly #2 1/2 Folder Assembly #3 Folder Assembly #3 1/2 Folder Assembly #4 Folder Assembly #5 Folder Assembly (3/16-AS) Folder Assembly (3/16-BS) Folder Assembly (1/4-AS) Folder Assembly (1/4-BS) Folder Assembly (1/4-CS) Folder Assembly (5/16-AS) Folder Assembly (5/16-BS) Folder Assembly (5/16-CS) Folder Assembly (3/8-AS) Folder Assembly (3/8-BS) Folder Assembly (3/8-CS) Folder Assembly (1/2-BS)

PARTS FOR U.S. AUTOMATIC BELT UNIT

Reference number refers to the part illustrated on page 21.

Ref. No.	Description	Part Number	Ref. No.	Description	Part Number
1.	Screw for 200 & 224	.203-A1	40.	Upper Knife Right	.1348
2.	Retainer Plate (Feed Bar)	.201-AZ	41.	Upper Knife Left	.1349
3.	Spring Tension Feed Bar	.201A	42.	Knife Carrier Support Right	.210RS
4.	Rear Top Feed Bracket	.200	43.	Screw for 225 & 210RS	.214SS
5.	Top Feed Bracket Screw	.1101	44.	Hex Head Cap for 210RS & 207ANN	.207ANSH
6.	Shoulder Screw for 200 & 201	200-2A	45.	Knife Carrier Support Left	.210LS
7.	Nut (Top Feed & Front Feed Screws)	.201-IN	46.	Screw for 210-LS & 212-C	.212-2S
8.	Front Feed Screw Set	.201-1S	47.	Washer for 221	.1053
9.	Pan Head Screw (Top Feed Bracket)	.201-S	48.	Knife Spring	.221
10.	Front Top Feed Bracket	.201	49.	Side Clamp	.212-C
11.	Front Top Feed Mounting Stud	202-1	50.	Screw for 210LS	.210-RS-1
12.	Screw - Mounting (Specify Size)	217-IN	51.	Secondary Stud Knife Block	.219-B
13.	Feed Brace	.202-B	52.	Shaft, Knife Block	.219-A
14.	Tape Guide (Filler-Buckram)	.202BSN	53.	Screw eye Stud	.206-INE
15.	Hex Nut 9-40 for 216AR & 202-1	1701	54.	Washer for 207ANSH	.207ANW
16.	Carrier, Operator Lever	.215 Unit	55.	Folder Adjustable Bracket	.207-ANN
17.	Groove Pin for 230	.1663	56.	Adjustable Stud for 207ANN -207ANS BIK 207KN	.207 ANS
18.	10-32 Socket Set Screw for 215 Unit	.1814	57.	Knurled Adj. Nut for 207-ANS	.206-INE-1
19.	10-32 Socket Head Cap Screw for 215 Unit & 210RS	.215-A2	58.	Rod End Shoulder Screws	.216-AR
20.	Top Feed (Specify Size) 5/16 - 3/8 - 7/16 - 1/2	.202A (Size)	59.	Feld Washer for 216-AR	.222A
21.	Screw Folder Mounting	.217H	60.	Rod End Bearing R.H. THD	.216B
22.	Folder (Specify Size) 5/16 - 3/8 - 7/16 - 1/2 also Opening ABC	.207 (Size)	61.	Knife Shaft Lever	.214-C
23.	Bushing for 207BNF	.207-B-1	62.	Set Screw for P/N 214-C	.1331
24.	Folder Adjustable Block	.207BNF	63.	Tie Rod Nut for 216-B	.1008
25.	Eye Screw for 207BNF	.207BFS	64.	Tie Rod (Specify machine size)	.216
26.	Spring for Folder Block	.1171	65.	Tie Rod Nut L.H. for 216-A	.216-ILN
27.	Knife Clamp Right	.211-R	66.	Rod End Bearing	.216-A
28.	Knife Clamp Left	.211-L	67.	Tie Rod Shield Unit	.217A-B Unit
29.	Lower Knife Right	.1351	68.	Screw for 217A-B 7NIT & 228	228SNP
30.	Lower Knife Left	.1352	69.	Support Shim BLP Frame	.230-1
31.	Bushing for 206 Block	.206B	70.	Flat Washer Support Shim	.1054
32.	Knife Block (Specify Size) 5/16 - 3/8 - 7/16 - 1/2	.206 (Size)	71.	Screw BLP Frame Mounting	.10014
33.	Socket Cap Screw for 206 Knife Block	.231	72.	Main Frame	.225
34.	Socket Set Screw for 206 Knife Block	.206SS	73.	Chip Guard Right	.224
35.	Knife Clamp Screw (Specify Size) for 5/16 - 3/8	.211-1	74.	Support Plate for 225	.230
	for 7/16 - 1/2	.211-2	75.	Upper Chip Guard Right (Specify size) 5/16" & 3/8", 7/16", 1/2"	.204ANS
36.	Screw for 210 NR & 210 NL	.216-S1	76.	I.D. Plate Trimmer Main Frame	200-ID
37.	Screw Upper Knife Clamp	.209-1	77.	Lower Guard Plate Right	.228
38.	Knife Carrier Right	.210-NR	78.	Lower Guard Plate Left	.203A
39.	Knife Carrier Left	.210-NL	79.	Screw Mounting 203A	.216-S
			80.	Lower Guard Plate Left 227, 227-1	.227
			81.	Screw Work Plate	.203NES
			82.	Work Plate Shield (Specify size) 5/16", 3/8", 7/16", 1/2"	.204NE Size
			83.	Work Plate	.203NEB
			84.	Oil Cup	.232



INSTRUCTIONS FOR SETTING FEEDER & KNIVES

1A – Top Auxiliary Feeder Adjusting Screws. Loosen nut and turn screw to adjust depth of feeder. **Caution:** Don't set too low as it will cause Feed Lever wear. Depth of Feeder should be set to hold two (2) ply of goods lightly. Auxiliary Feeder should be heeled so that point of Feeder is higher. This will allow Folder to rise when overlap goes through.

1B – Adjustable screw for positioning and centering feeder.

1C – For removing lower knives when replacing, set edge of knives even with folder.

1D – Screws (#209-1) for removing and adjusting top knives.

1E – Screw adjustment for raising and lowering folder.

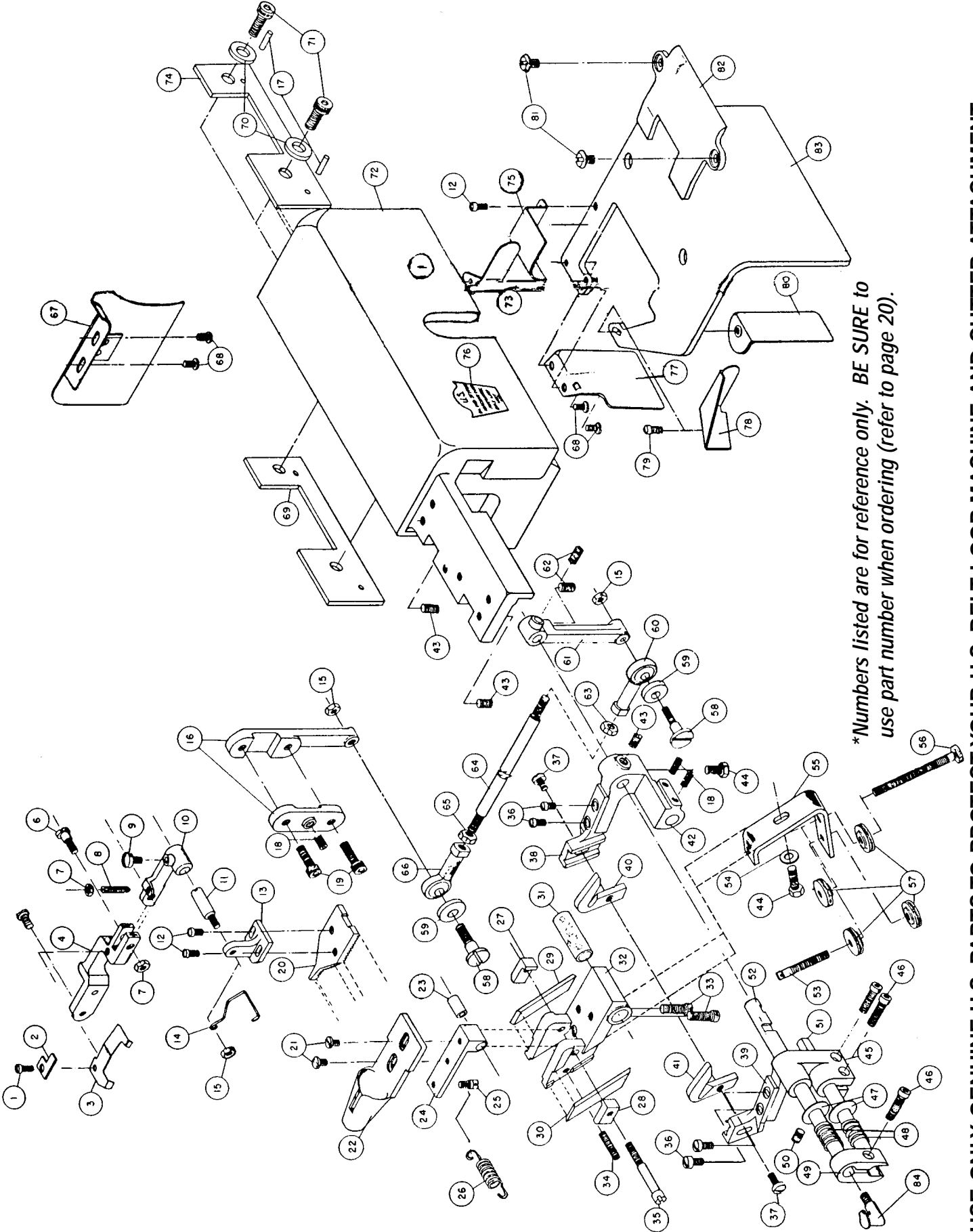
Caution: Don't set set folder too low as rib will cause wear.

1F – Folder pressure adjustment screw.

CAUTION:

1. Machine is not to exceed 2000 RPM.
2. Motor must be 1725 RPM (2 1/2" Pulley).
3. Oil frequently – Add a few drops of oil between knives daily.
4. Stitch length should not be changed as it will affect trimmer.

PARTS FOR U.S. AUTOMATIC BELT UNIT



USE ONLY GENUINE U.S. PARTS TO PROTECT YOUR U.S. BELT LOOP MACHINE AND CUTTER ATTACHMENT