

Yamato[®]

Instruction Manual

Parts List

Supplement

送り出し腕型偏平縫いミシン
FEED-OFF-THE-ARM MACHINE FOR FLAT SEAMING

FD-62E

本書はFD-62E クラスにおいてTU-C-R 及びTU-S の据え付け方法を記載しています。FD-62E クラスの取扱い説明書と合わせて保管してください。

This instruction manual includes the method of installing TU-C-R and TU-S to the FD-62E class. Please keep this book with the instruction manual for FD-62E class together.

CONTENTS

1. Installation	1
1.1 Installation	1
1.1.1 Motor table top type(TU-C-R, TU-S)	1
1.1.2 Compact type motor	4
1.2 Belt cover	6
1.3 Synchroniser	6

*****ILLUSTRATED SPARE PARTS LIST *****

Attention

The description in this instruction manual is subject to change for improvements of the commodity without notice.

1. Installation

1.1 Installation

1.1.1 Motor table top type(TU-C-R, TU-S)

Table cutting diagram

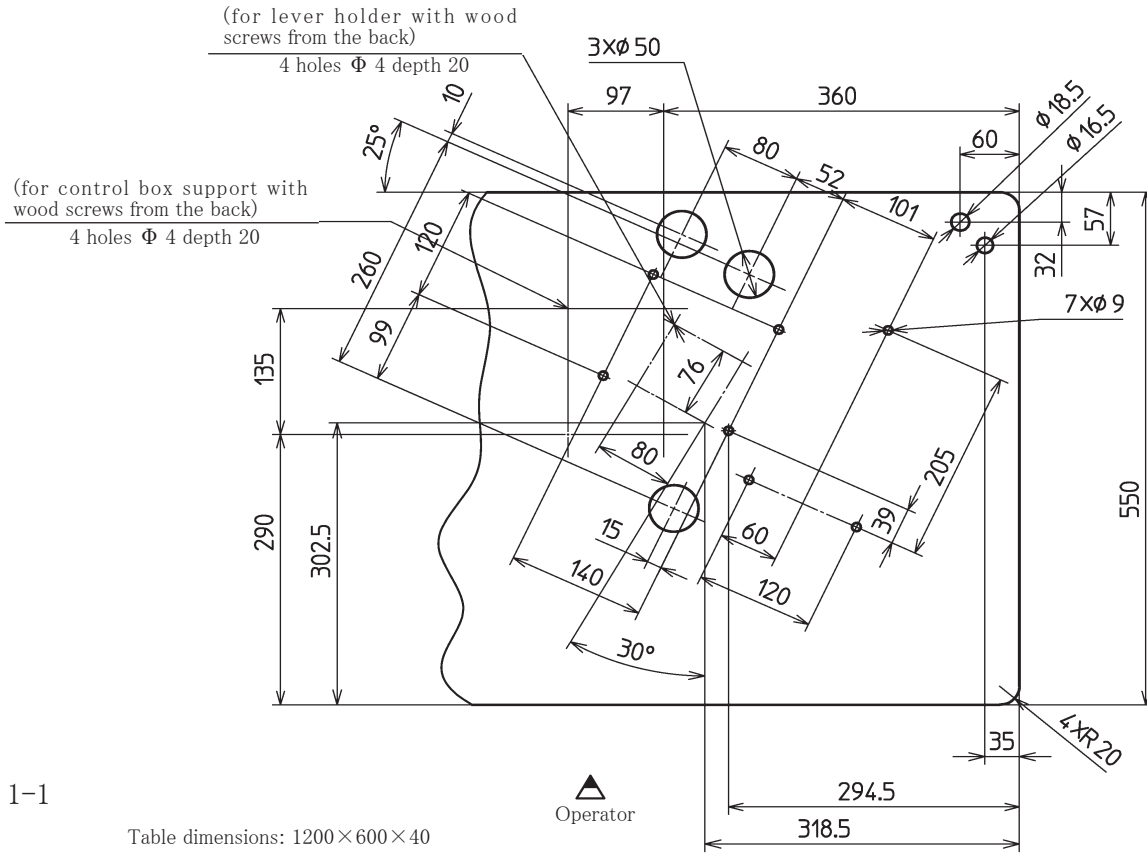


Fig. 1-1

Motor support (lower) (Fig1-3 ③ and ⑧ , Fig1-4 ⑤ and ⑨)

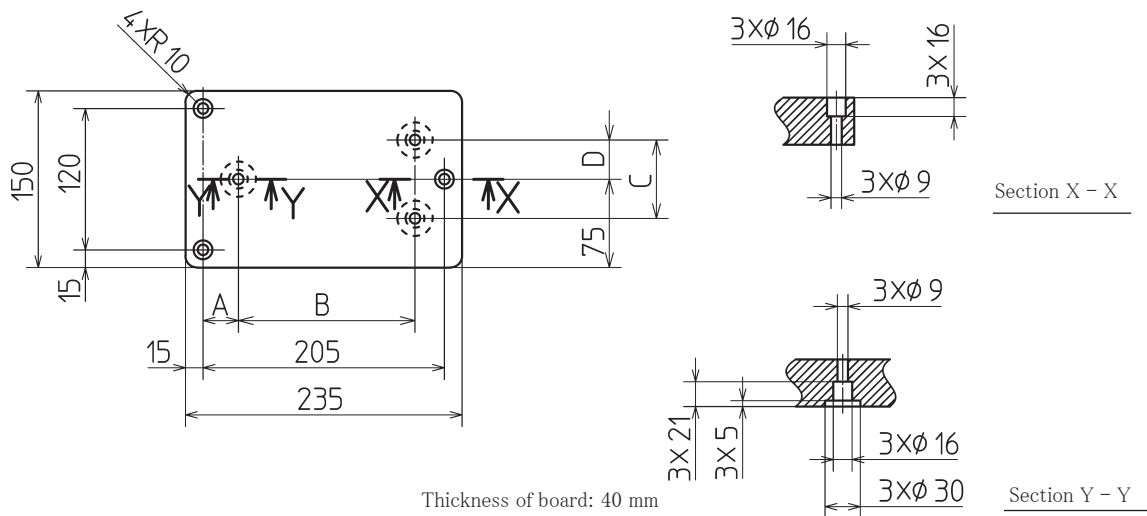


Fig. 1-2

For dimensions of A, B, C, D refer to the instruction manual for the motor.

1.Installatioin

Installing TU-C-R(Clutch motor)

See Fig.1-3 to assemble the machine according to the following steps:

1. Install assembled lever relation (A) on the bottom of machine table ① .
2. Install the handwheel relation (B) onto the motor ② .
3. Install the motor ② onto the motor support ③ .(C)
4. Install the (D) onto the machine table ① .
5. Install the (E) onto the machine table ① .
6. Install the (F) onto the (E).
7. Install the lever plate ④ and lever(upper) ⑤ onto the motor ② .
8. Install the pitman(long) ⑥ as shown in the figure. Then, adjust the length of pitman(longe) ⑥ .
9. Install the pitman(long) ⑦ as shown in the figure. Then, adjust the length of pitman(longe) ⑦ .

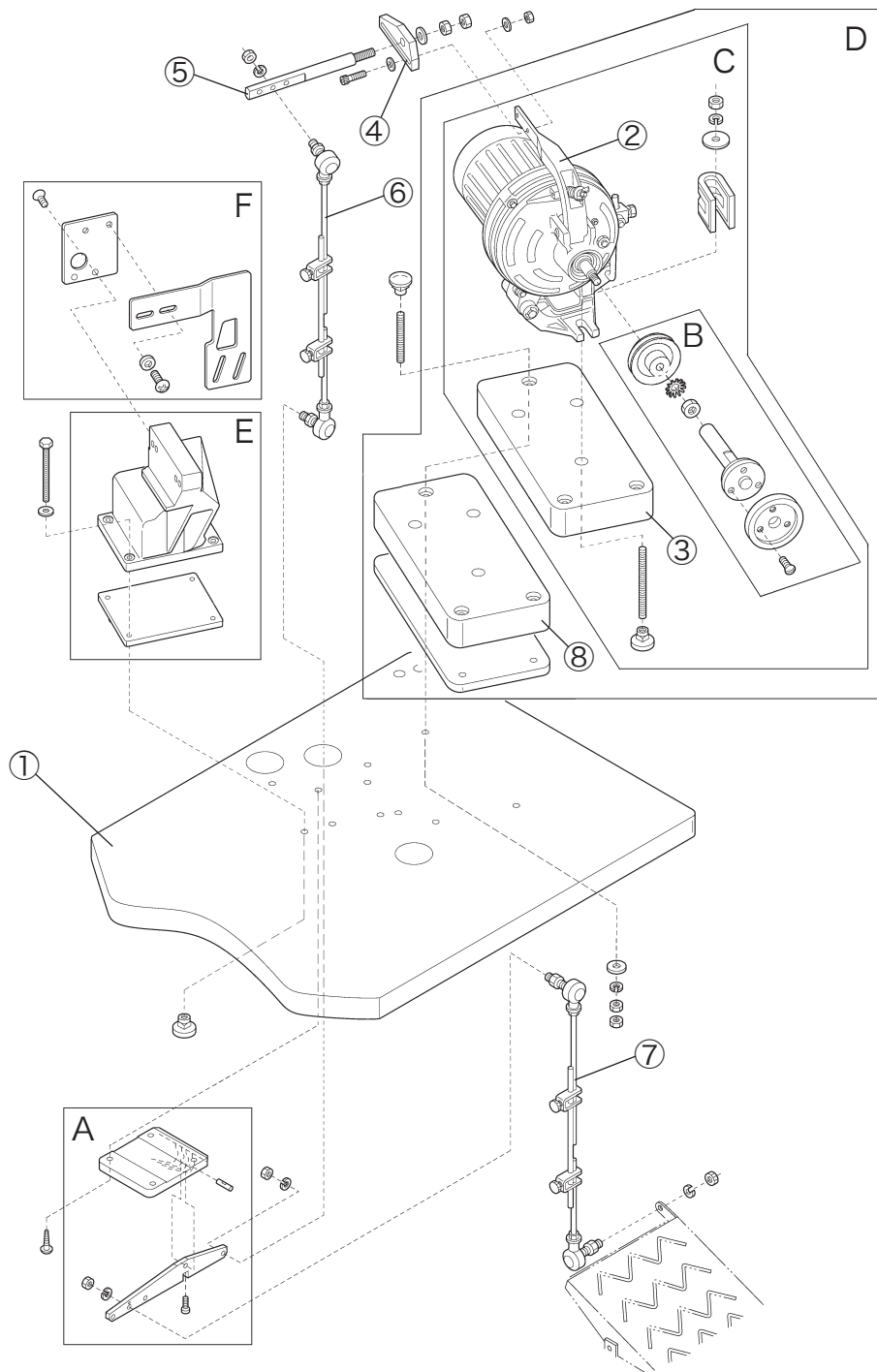


Fig. 1-3

Installing TU-S(Servomotor)

See Fig.1-4 to assemble the machine according to the following steps:

1. Install the control box support ① on the bottom of the machine table ② .
2. Install the control box ③ on the control box support ① .
3. Install the handwheel relation (A) onto the motor ④ .
4. Install the motor ④ onto the motor support ⑤ . (B)
5. Install the (C) onto the machine table ② .
6. Install the (D) onto the machine table ② .
7. Install the (E) onto the (D).
8. Install the synchroniser ⑥ on the pulley of sewing machine.
9. Connect the motor ④ and the control box ③ with the extension cords ⑦⑧ .

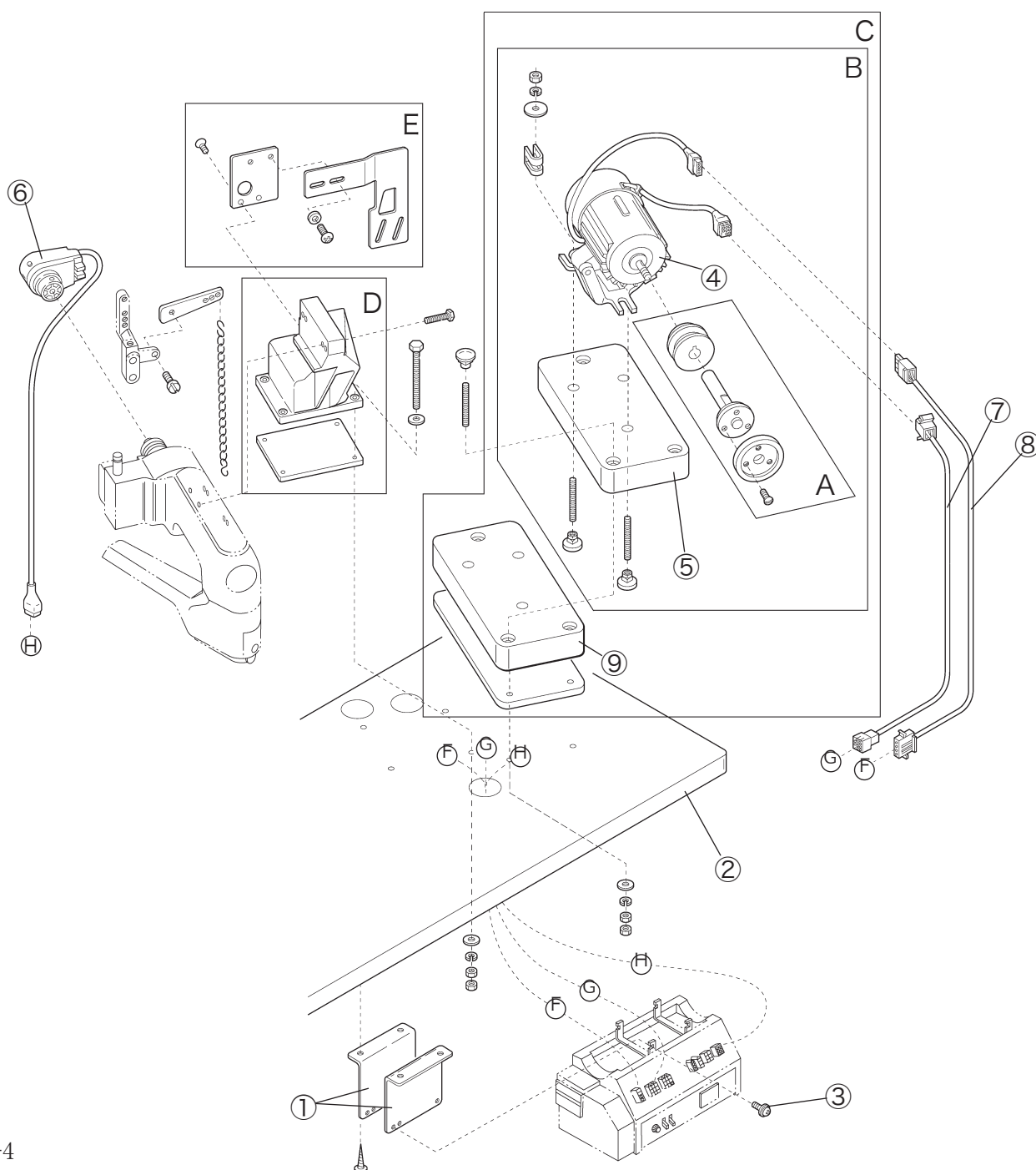


Fig. 1-4

1. Installation

1.1.2 Compact type motor

Table cutting diagram

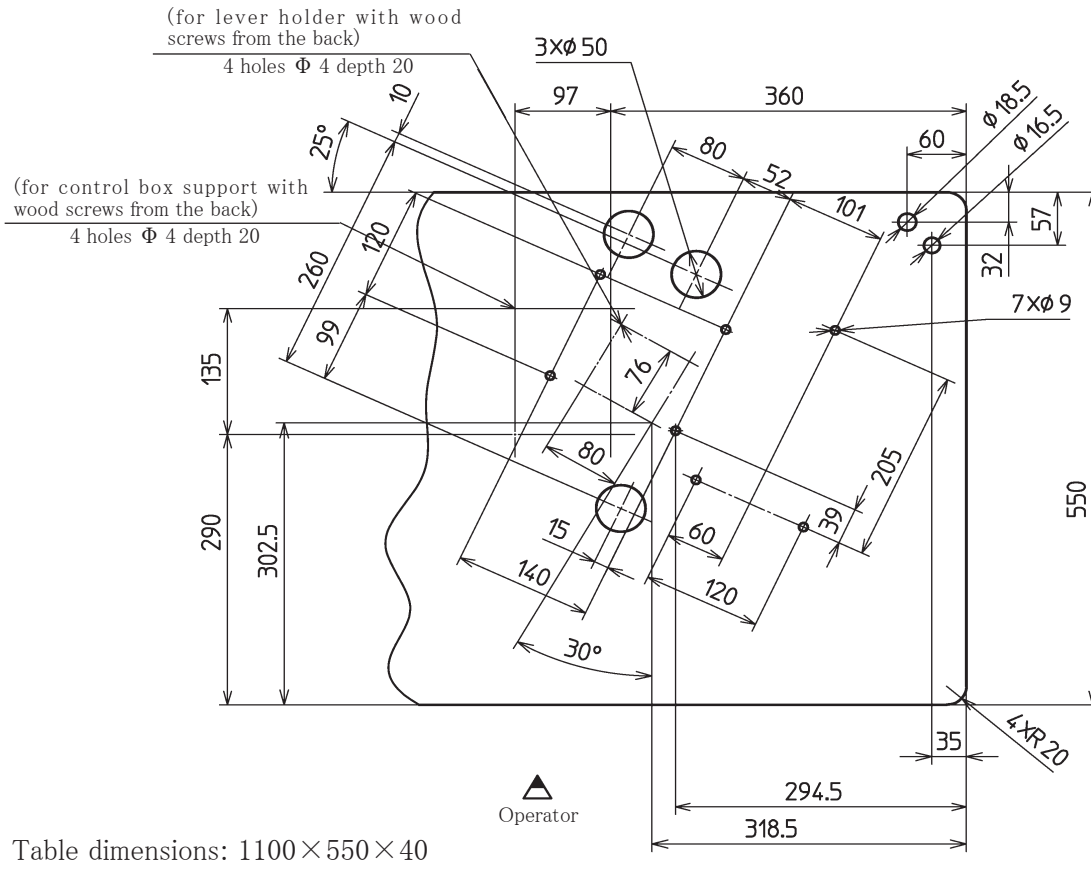


Fig. 1-5

Installing

Set the motor correctly, referring to Fig. 1-6.

Refer to 「SD-Y、FDL-6」 Insutruction about Installing of detail.

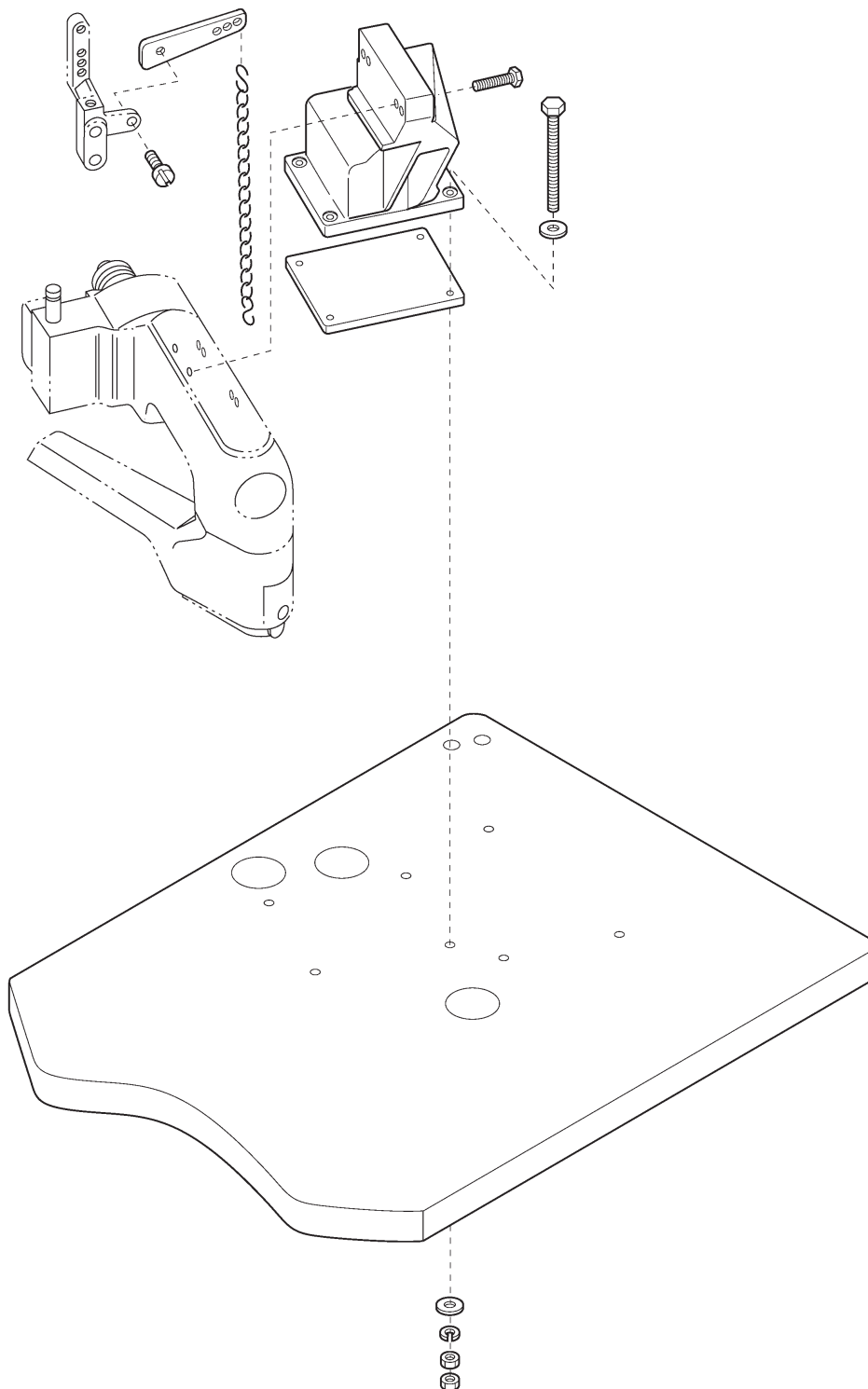


Fig. 1-6

1.2 Belt cover

⚠ CAUTION

Be sure to install belt cover to prevent you from injuring and a material from being caught by the belt.

Table top type (TU-C-R, TU-S)

- (1) Set the belt cover(lower) ① on the belt cover bracket ② with the screws ③ . (Fig. 1-7)
- (2) Fix the belt cover(lower) ① on the sewing machine supporting block with the screw ④ . (Fig. 1-8)
- (3) Set the belt cover(upper) ⑤ on the belt cover(lower) ① with four screws ⑥⑦ . (Fig. 1-8 and Fig. 1-9)

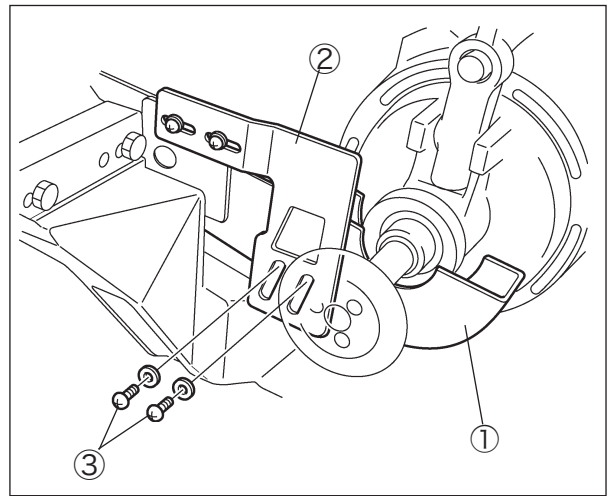


Fig.1-7

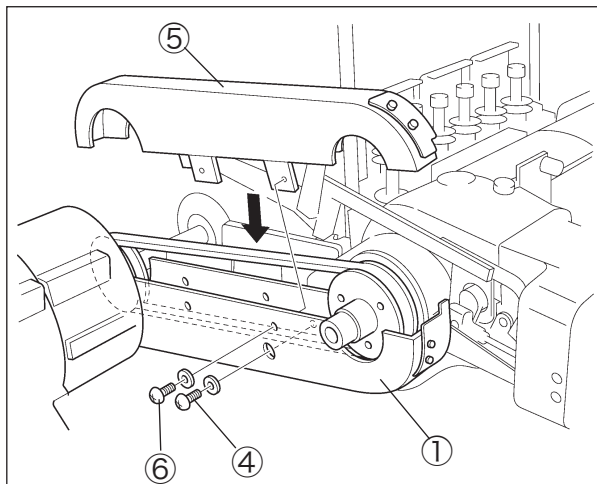


Fig.1-8

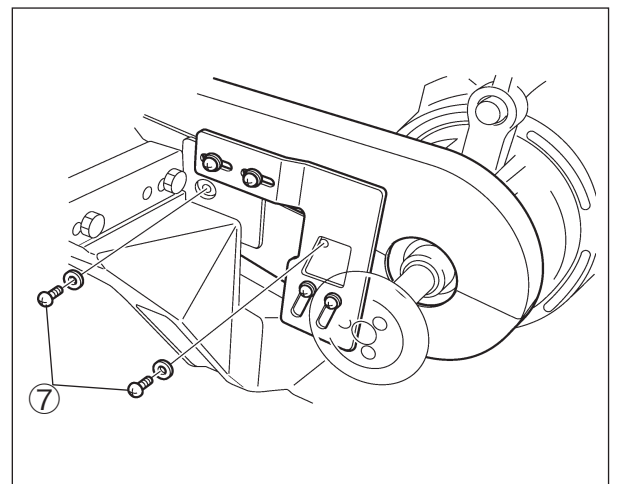


Fig.1-9

1.3 Synchroniser

Set the synchroniser included a servomotor as follows.

Table top type (TU-S):

- (1) Remove the screw ⑧ and washer ⑨ .
- (2) Set the positioning plate ⑩ on the belt cover(lower) ① with the screw ⑧ and washer ⑨ .
- (3) Set the synchroniser on the machine pulley and fix it with the positioning plate ⑩ .

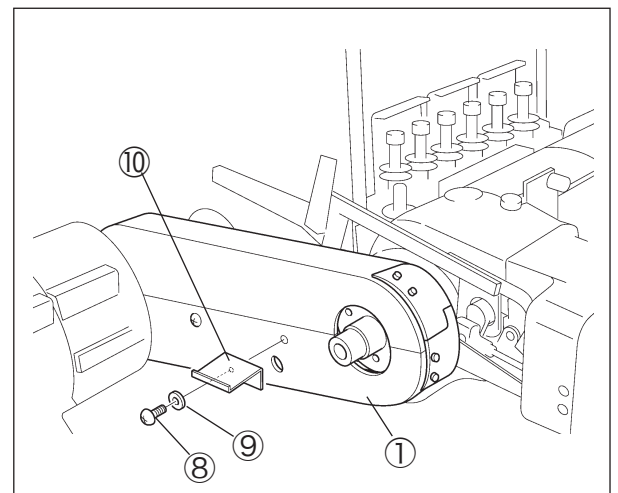
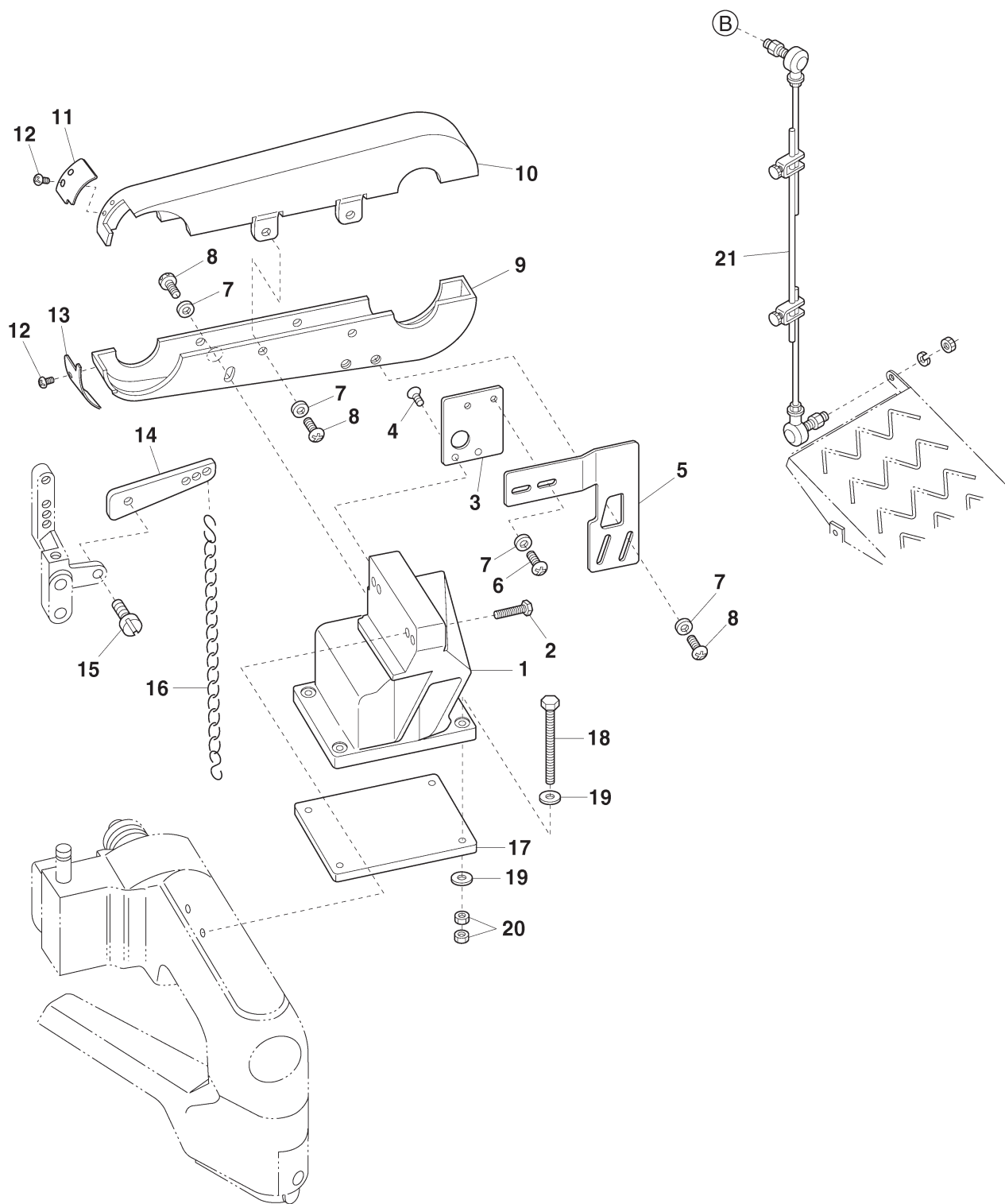


Fig. 1-10

ILLUSTRATED SPARE PARTS LIST

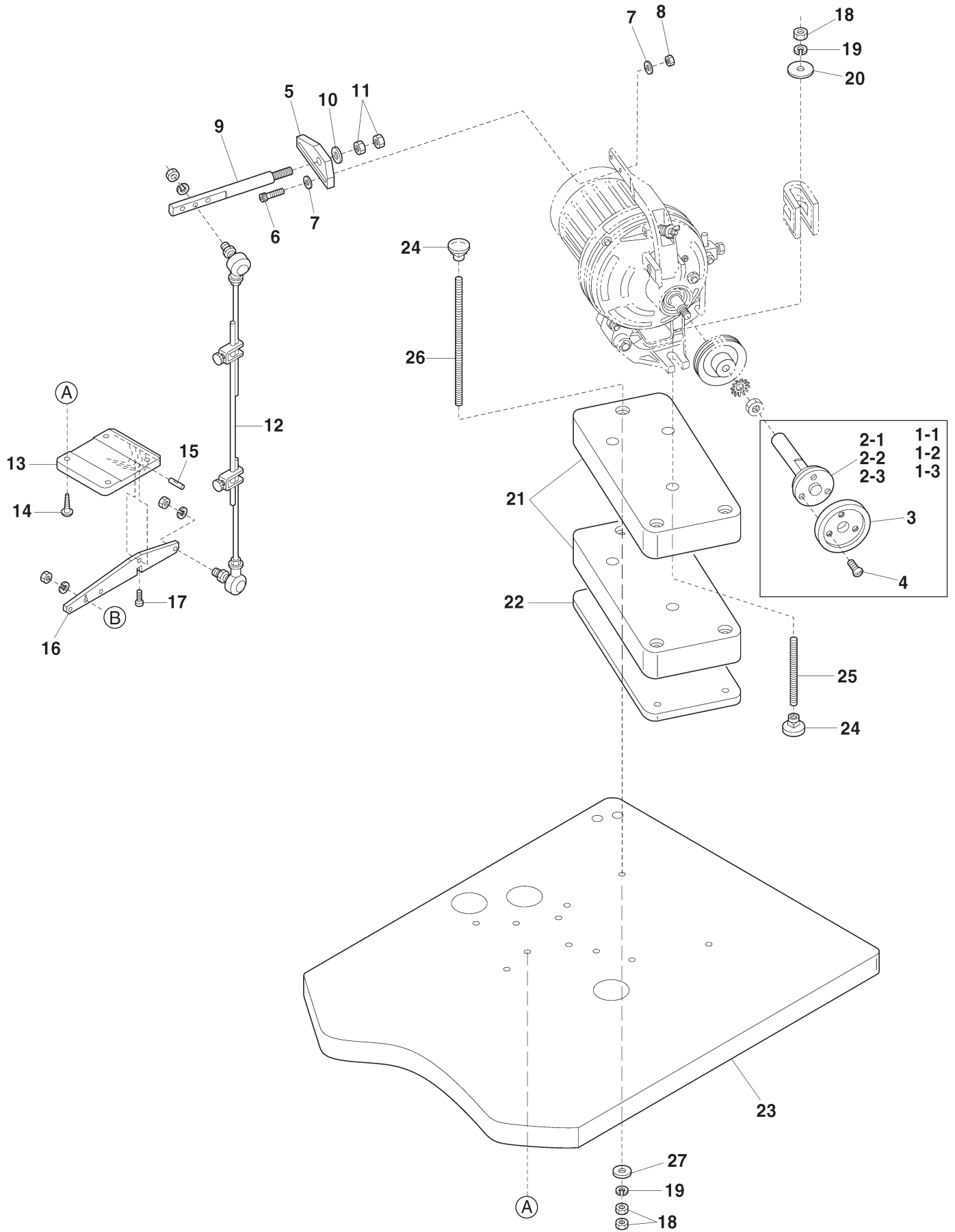
FD-62E
(Supplement)

SET STYLE TU-C-R(1)



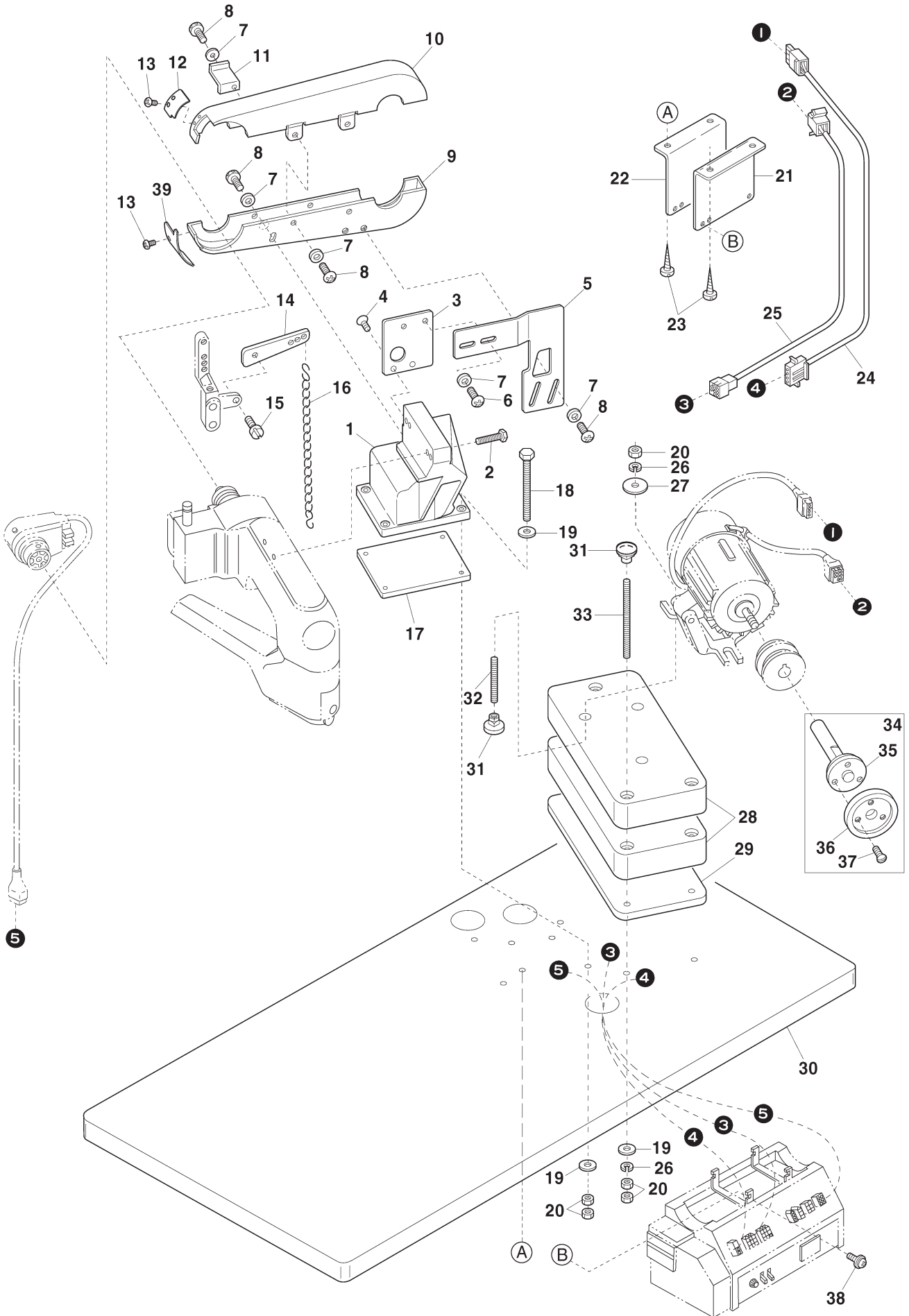
Ref.No	Parts No.	Description	品 名	Amt. Req
1	6400408	Sewing Machine Supporting Block	ミシン取付台	1
2	004215	Screw(3/8-16×45)	止ネジ	2
3	6400409	Belt Cover Bracket	ベルトカバー取付板	1
4	009897	Screw(M6-1 × 12)	止ネジ	2
5	6400410	Belt Cover Adjusting Plate	ベルトカバー調節板	1
6	110017	Screw(M5-0.8×8)	止ネジ	2
7	000669	Washer	ワッシャ	9
8	009973	Screw(M5-0.8×10)	止ネジ	7
9	6400411	Belt Cover(Lower)	ベルトカバー(下)	1
10	6400412	Belt Cover(Upper)	ベルトカバー(上)	1
11	6400413	Belt Cover(Upper) Lid	ベルトカバー(上)蓋	1
12	110012	Screw(M4-0.7×5)	止ネジ	4
13	6400414	Belt Cover(Lower) Lid	ベルトカバー(下)蓋	1
14	6400415	Presser Foot Connecting Lever	押工揚げ連結レバー	1
15	004440	Screw(11/64-40×8.3)	止ネジ	1
16	6500304	Chain	鎖	1
17	6400417	Supporting Block Cushion	取付台クッション	1
18	190106	Bolt(M8-1.25×90)	ボルト	4
19	000429	Washer	ワッシャ	8
20	000016	Nut	ナット	8
21	6800003	Pitman(Long)	ピットマン(長)	1

SET STYLE TU-C-R(2)



Ref.No	Parts No.	Description	品 名	Amt. Req
1-1	6400211	Handwheel, C. Set(M12-1.75)	ハンドホイール (組)	1
1-2	6400221	Handwheel, C. Set(M10-1)	ハンドホイール (組)	1
1-3	6400228	Handwheel, C. Set(M14-2)	ハンドホイール (組)	1
2-1	6400222	Handwheel Shaft(M12-1.75)	ハンドホイール軸	1
2-2	6400223	Handwheel Shaft(M10-1)	ハンドホイール軸	1
2-3	6400229	Handwheel Shaft(M14-2)	ハンドホイール軸	1
3	6400224	Handwheel	ハンドホイール	1
4	009508	Screw(11/64-40×7.5)	止ネジ	3
5	6400341	Lever Plate	レバー補助台	1
6	009977	Screw(M6-1 × 25)	止ネジ	2
7	000613	Washer	ワッシャ	4
8	100003	Nut	ナット	2
9	6400340	Lever(Upper)	レバー (上)	1
10	000498	Washer	ワッシャ	1
11	000054	Nut	ナット	2
12	6800003	Pitman(Long)	ピットマン (長)	1
13	6400342	Lever Holder	レバー台	1
14	006920	Wood Screw(Φ5.8×32)	木ネジ	4
15	6100380	Lever Pin	レバーピン	1
16	6400343	Lever(Lower)	レバー (下)	1
17	110022	Screw(M3-0.5×10)	止ネジ	1
18	000016	Nut	ナット	9
19	000676	Spring Washer	スプリングワッシャ	6
20	300019	Washer	ワッシャ	3
21	6800007	Motor Support	モータ取付台	2
22	6400417	Motor Support Cushion	モータ取付台クッション	1
23	6800008	Machine Table	テーブル	1
24	000070	Hanging Nut	吊リナット	6
25	009858	Bolt(M8-1.25×75)	ボルト	3
26	190058	Bolt(M8-1.25×150)	ボルト	3
27	000429	Washer	ワッシャ	3

SET STYLE TU-S



Ref.No	Parts No.	Description	品 名	Amt. Req
1	6400408	Sewing Machine Supporting Block	ミシン取付台	1
2	004215	Screw(3/8-16×45)	止ネジ	2
3	6400409	Belt Cover Bracket	ベルトカバー取付板	1
4	009897	Screw(M6-1 × 12)	止ネジ	2
5	6400410	Belt Cover Adjusting Plate	ベルトカバー調節板	1
6	110017	Screw(M5-0.8×8)	止ネジ	2
7	000669	Washer	ワッシャ	10
8	009973	Screw(M5-0.8×10)	止ネジ	8
9	6400411	Belt Cover(Lower)	ベルトカバー(下)	1
10	6400412	Belt Cover(Upper)	ベルトカバー(上)	1
11	6400327	Position Plate	位置決め板	1
12	6400413	Belt Cover(Upper) Lid	ベルトカバー(上) 蓋	1
13	110012	Screw(M4-0.7×5)	止ネジ	4
14	6400415	Presser Foot Connecting Lever	押工揚げ連結レバー	1
15	004440	Screw(11/64-40×8.3)	止ネジ	1
16	6500304	Chain	鎖	1
17	6400417	Supporting Block Cushion	取付台クッション	1
18	190106	Bolt(M8-1.25×90)	ボルト	4
19	000429	Washer	ワッシャ	11
20	000016	Nut	ナット	17
21	6400325	Control Box Support(Front)	制御ボックス取付板(前)	1
22	6400326	Control Box Support(Rear)	制御ボックス取付板(後)	1
23	006905	Wood Screw(φ5.1×20)	木ネジ	4
24	-----	Cable	ケーブル	1
25	-----	Cable	ケーブル	1
26	000676	Spring Washer	スプリングワッシャ	6
27	300019	Washer	ワッシャ	3
28	6800007	Motor Support	モータ取付台	2
29	6400416	Motor Support Cushion	モータ取付台クッション	1
30	6800008	Machine Table	テーブル	1
31	000070	Hanging Nut	吊リナット	6
32	009858	Bolt(M8-1.25×75)	ボルト	3
33	190058	Bolt(M8-1.25×150)	ボルト	3
34	6400228	Handwheel. C. Set(M10)	ハンドホイール(組)	1
35	6400223	Handwheel Shaft(M10)	ハンドホイール軸	1
36	6400224	Handwheel	ハンドホイール	1
37	009508	Screw(11/64-40×7.5)	止ネジ	3
38	005624	Screw(M4-0.7×10)	止ネジ	4
39	6400414	Belt Cover(Lower) Lid	ベルトカバー(下) 蓋	1

Note: When ordering the Ref. No. 24 and Ref. No. 25 of the cable, please inquire the the maker of the motor.

(注) Ref. No.24, 25 のケーブルをご注文の際は、ご使用のモータのメーカーにお問い合わせください。



YAMATO SEWING MACHINE (NINGBO) CO., LTD.
No.641, WEST HENSHAN ROAD, ECONOMIC
& TECHNICAL DEVELOPMENT ZONE, BEILUN,
NINGBO, P.R.CHINA, P.C. 315800

Tel. +86-574-8680-0888

Fax. +86-574-8680-0555